



# SZABO SCANDIC

Part of Europa Biosite

## Produktinformation



Forschungsprodukte & Biochemikalien



Zellkultur & Verbrauchsmaterial



Diagnostik & molekulare Diagnostik



Laborgeräte & Service

Weitere Information auf den folgenden Seiten!  
See the following pages for more information!



### Lieferung & Zahlungsart

siehe unsere [Liefer- und Versandbedingungen](#)

### Zuschläge

- Mindermengenzuschlag
- Trockeneiszuschlag
- Gefahrgutzuschlag
- Expressversand

### SZABO-SCANDIC HandelsgmbH

Quellenstraße 110, A-1100 Wien

T. +43(0)1 489 3961-0

F. +43(0)1 489 3961-7

[mail@szabo-scandic.com](mailto:mail@szabo-scandic.com)

[www.szabo-scandic.com](http://www.szabo-scandic.com)

[linkedin.com/company/szaboscandic](https://www.linkedin.com/company/szaboscandic) 

**LTA (Human) Recombinant Protein** HuPro®

Catalog # : H00004049-H01

規格 : [ 25 ug ]

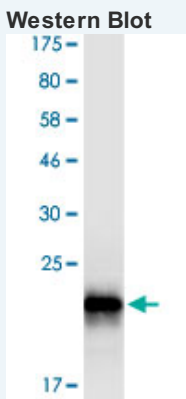
[List All](#)
**Specification**

<b>Product Description:</b>	Purified LTA (AAH34729.1 58 a.a. - 205 a.a.) human recombinant protein with His-Flag-Strepll tag at N-terminus expressed in human cells.
<b>Transfected Cell Line:</b>	Human HEK293T cells
<b>Sequence:</b>	HSTLKPA AHLIGDPSKQNSLLWRANTDRAFLQDGFSLSNNSLLVPTSGIY FVYSQVWFSGKAYSPKATSSPLYLAHEVQLFSSQYPFHVPLLSSQKMY PGLQEPWLHSMYHGAAFQLTQGDQLSTHTDGIPHLVLSPTVFFGAFAL
<b>Host:</b>	Human
<b>Theoretical MW (kDa):</b>	21.56
<b>Form:</b>	Liquid
<b>Preparation Method:</b>	Transfection of pSuper-LTA plasmid into HEK293T cell, and the expressed protein was purified by <i>Strep</i> -Tactin affinity column.
<b>Purification:</b>	<i>Strep</i> -Tactin affinity columns
<b>Concentration:</b>	≥ 10 ug/ml
<b>Activity:</b>	Not Tested

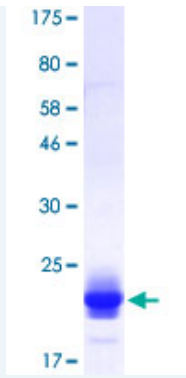
**Application Image**

- Western Blot
- Enzyme-linked Immunoabsorbent Assay
- SDS-PAGE
- Protein Interaction

**Quality Control Testing:** SDS-PAGE and Western Blot



SDS-PAGE Gel



**Storage Buffer:** 100 mM Tris-HCl pH 8.0, 150 mM NaCl, 1 mM EDTA, and 5 mM desthiobiotin.

**Storage Instruction:** Store at -80°C. Aliquot to avoid repeated freezing and thawing.

**Datasheet:**  [Download](#)

## Applications

Western Blot

Enzyme-linked Immunoabsorbent Assay

SDS-PAGE

Protein Interaction

## Gene Information

**Entrez GeneID:** [4049](#)

**GeneBank Accession#:** [BC034729.1](#)

**Protein Accession#:** [AAH34729.1](#)

**Gene Name:** LTA

**Gene Alias:** LT, TNFB, TNFSF1

**Gene Description:** lymphotoxin alpha (TNF superfamily, member 1)

**Omim ID:** [153440](#)

**Gene Ontology:** [Hyperlink](#)

**Gene Summary:** The encoded protein, a member of the tumor necrosis factor family, is a cytokine produced by lymphocytes. The protein is highly inducible, secreted, and forms heterotrimers with lymphotoxin-beta which anchor lymphotoxin-alpha to the cell surface. This protein also mediates a large variety of inflammatory, immunostimulatory, and antiviral responses, is involved in the formation of secondary lymphoid organs during development and plays a role in apoptosis. Genetic variations in this gene are associated with susceptibility to leprosy type 4 and psoriatic arthritis

**Other Designations:** OTTHUMP00000029184, OTTHUMP00000037612, OTTHUMP00000037613, OTTHUMP00000165897, lymphotoxin alpha, tumor necrosis factor beta

## Gene Pathway

---

[Antigen processing and presentation](#) [Cytokine-cytokine receptor interaction](#)  
[Type I diabetes mellitus](#)

## Related Disease

---

[Abortion, Habitual](#) [Abortion, Spontaneous](#) [Acute Disease](#) [Adenocarcinoma](#)  
[Adenomatous Polyps](#) [AIDS-Related Opportunistic Infections](#) [Alcoholism](#) [Alzheimer Disease](#)  
[Alzheimer disease](#) [Amyotrophic Lateral Sclerosis](#) [Amyotrophic lateral sclerosis](#)  
[Arterial Occlusive Diseases](#) [Arteriosclerosis](#) [Arthralgia](#) [Arthritis](#)  
[Arthritis, Juvenile Rheumatoid](#) [Arthritis, Psoriatic](#) [Arthritis, Rheumatoid](#) [Aspergillosis](#)

[... see more](#)

---

[服務條款](#) | [隱私權政策](#) | [著作及商標](#) | [網站地圖](#)

©2016 亞諾法生技股份有限公司 Abnova Corporation. 版權所有.