



SZABO SCANDIC

Part of Europa Biosite

Produktinformation



Forschungsprodukte & Biochemikalien



Zellkultur & Verbrauchsmaterial



Diagnostik & molekulare Diagnostik



Laborgeräte & Service

Weitere Information auf den folgenden Seiten!
See the following pages for more information!



Lieferung & Zahlungsart

siehe unsere [Liefer- und Versandbedingungen](#)

Zuschläge

- Mindermengenzuschlag
- Trockeneiszuschlag
- Gefahrgutzuschlag
- Expressversand

SZABO-SCANDIC HandelsgmbH

Quellenstraße 110, A-1100 Wien

T. +43(0)1 489 3961-0

F. +43(0)1 489 3961-7

mail@szabo-scandic.com

www.szabo-scandic.com

[linkedin.com/company/szaboscandic](https://www.linkedin.com/company/szaboscandic) 

LYN (Human) IP-WB Antibody Pair

Catalog # : H00004067-PW1

規格 : [1 Set]

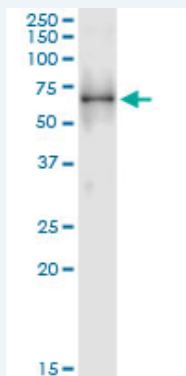
List All

Specification

Product Description: This IP-WB antibody pair set comes with one antibody for immunoprecipitation and another to detect the precipitated protein in western blot.

Reactivity: Human

Quality Control Testing: Immunoprecipitation-Western Blot (IP-WB)



Immunoprecipitation of LYN transfected lysate using rabbit polyclonal anti-LYN and Protein A Magnetic Bead ([U0007](#)), and immunoblotted with mouse purified polyclonal anti-LYN.

Supplied Product: Antibody pair set content:
 1. Antibody pair for IP: rabbit polyclonal anti-LYN (300 ul)
 2. Antibody pair for WB: mouse purified polyclonal anti-LYN (50 ug)

Storage Instruction: Store reagents of the antibody pair set at -20°C or lower. Please aliquot to avoid repeated freeze thaw cycle. Reagents should be returned to -20°C storage immediately after use.

Applications

Immunoprecipitation-Western Blot

 [Protocol Download](#)

Gene Information

Entrez GeneID: [4067](#)

Gene Name: LYN

Gene Alias: FLJ26625,JTK8

Gene Description: v-yes-1 Yamaguchi sarcoma viral related oncogene homolog

Omim ID: [165120](#)

Gene Ontology: [Hyperlink](#)

Other: Yamaguchi sarcoma viral (v-yes-1) oncogene homolog, Yamaguchi

Designations: sarcoma viral (v-yes-1) related oncogene homolog

Gene Pathway

[B cell receptor signaling pathway](#) [Chemokine signaling pathway](#)
[Epithelial cell signaling in Helicobacter pylori infection](#) [Fc epsilon RI signaling pathway](#)
[Fc gamma R-mediated phagocytosis](#) [Long-term depression](#)

Related Disease

[Diabetes Mellitus, Type 2](#) [Genetic Predisposition to Disease](#) [HIV Infections](#)
[Lupus Erythematosus, Systemic](#) [Mental Disorders](#) [Tobacco Use Disorder](#)

[服務條款](#) | [隱私權政策](#) | [著作及商標](#) | [網站地圖](#)

©2016 亞諾法生技股份有限公司 Abnova Corporation. 版權所有.