



SZABO SCANDIC

Part of Europa Biosite

Produktinformation



Forschungsprodukte & Biochemikalien



Zellkultur & Verbrauchsmaterial



Diagnostik & molekulare Diagnostik



Laborgeräte & Service

Weitere Information auf den folgenden Seiten!
See the following pages for more information!



Lieferung & Zahlungsart

siehe unsere [Liefer- und Versandbedingungen](#)

Zuschläge

- Mindermengenzuschlag
- Trockeneiszuschlag
- Gefahrgutzuschlag
- Expressversand

SZABO-SCANDIC HandelsgmbH

Quellenstraße 110, A-1100 Wien

T. +43(0)1 489 3961-0

F. +43(0)1 489 3961-7

mail@szabo-scandic.com

www.szabo-scandic.com

[linkedin.com/company/szaboscandic](https://www.linkedin.com/company/szaboscandic) 

MCM2 (Human) IP-WB Antibody Pair

Catalog # : H00004171-PW1

規格 : [1 Set]

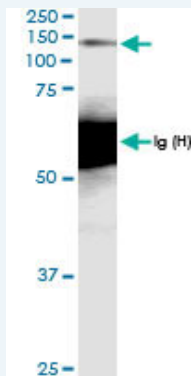
[List All](#)

Specification

Product Description: This IP-WB antibody pair set comes with one antibody for immunoprecipitation and another to detect the precipitated protein in western blot.

Reactivity: Human

Quality Control Testing: Immunoprecipitation-Western Blot (IP-WB)



Immunoprecipitation of MCM2 transfected lysate using rabbit polyclonal anti-MCM2 and Protein A Magnetic Bead ([U0007](#)), and immunoblotted with rabbit polyclonal anti-MCM2.

Supplied Product: Antibody pair set content:
1. Antibody pair for IP: rabbit polyclonal anti-MCM2 (300 ul)
2. Antibody pair for WB: rabbit polyclonal anti-MCM2 (50 ul)

Storage Instruction: Store reagents of the antibody pair set at -20°C or lower. Please aliquot to avoid repeated freeze thaw cycle. Reagents should be returned to -20°C storage immediately after use.

MSDS:  [Download](#)

Applications

Immunoprecipitation-Western Blot

 [Protocol Download](#)

Gene Information

Entrez GeneID: [4171](#)

Gene Name: MCM2

Gene Alias: BM28, CCNL1, CDCL1, D3S3194, KIAA0030, MGC10606, MITOTIN, cdc19

Gene Description: minichromosome maintenance complex component 2

Omim ID: [116945](#)

Gene Ontology: [Hyperlink](#)

Application Image

Immunoprecipitation-Western Blot

Gene Summary: The protein encoded by this gene is one of the highly conserved mini-chromosome maintenance proteins (MCM) that are involved in the initiation of eukaryotic genome replication. The hexameric protein complex formed by MCM proteins is a key component of the pre-replication complex (pre_RC) and may be involved in the formation of replication forks and in the recruitment of other DNA replication related proteins. This protein forms a complex with MCM4, 6, and 7, and has been shown to regulate the helicase activity of the complex. This protein is phosphorylated, and thus regulated by, protein kinases CDC2 and CDC7. [provided by RefSeq]

Other Designations: DNA replication licensing factor MCM2, MCM2 minichromosome maintenance deficient 2, mitotin, cell division cycle-like 1, cyclin-like 1, minichromosome maintenance deficient 2 (mitotin), nuclear protein BM28

Gene Pathway

[Cell cycle](#) [DNA replication](#)

Related Disease

[Genetic Predisposition to Disease](#) [Ovarian Neoplasms](#)

[服務條款](#) | [隱私權政策](#) | [著作及商標](#) | [網站地圖](#)

©2016 亞諾法生技股份有限公司 Abnova Corporation. 版權所有.