



SZABO SCANDIC

Part of Europa Biosite

Produktinformation



Forschungsprodukte & Biochemikalien



Zellkultur & Verbrauchsmaterial



Diagnostik & molekulare Diagnostik



Laborgeräte & Service

Weitere Information auf den folgenden Seiten!
See the following pages for more information!



Lieferung & Zahlungsart

siehe unsere [Liefer- und Versandbedingungen](#)

Zuschläge

- Mindermengenzuschlag
- Trockeneiszuschlag
- Gefahrgutzuschlag
- Expressversand

SZABO-SCANDIC HandelsgmbH

Quellenstraße 110, A-1100 Wien

T. +43(0)1 489 3961-0

F. +43(0)1 489 3961-7

mail@szabo-scandic.com

www.szabo-scandic.com

[linkedin.com/company/szaboscandic](https://www.linkedin.com/company/szaboscandic) 

NEDD9 (Human) Matched Antibody Pair

Catalog # : H00004739-AP11

規格 : [1 Set]

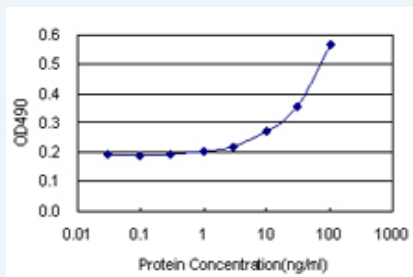
[List All](#)

Specification

Product Description: This antibody pair set comes with matched antibody pair to detect and quantify protein level of human NEDD9.

Reactivity: Human

Quality Control Testing: Standard curve using recombinant protein (H00004739-P01) as an analyte.



Sandwich ELISA detection sensitivity ranging from 3 ng/ml to 100 ng/ml.

Supplied Product: Antibody pair set content:
 1. Capture antibody: rabbit MaxPab® affinity purified polyclonal anti-NEDD9 (100 ug)
 2. Detection antibody: mouse monoclonal anti-NEDD9, IgG1 Kappa (20 ug)
 *Reagents are sufficient for at least 1-2 x 96 well plates using recommended protocols.

Storage Instruction: Store reagents of the antibody pair set at -20°C or lower. Please aliquot to avoid repeated freeze thaw cycle. Reagents should be returned to -20°C storage immediately after use.

MSDS:  [Download](#)

Applications

ELISA Pair (Recombinant protein)

 [Protocol Download](#)

Gene Information

Entrez GeneID: [4739](#)

Gene Name: NEDD9

Gene Alias: CAS-L,CAS2,CASL,CASS2,HEF1,dJ49G10.2,dJ761I2.1

Gene Description: neural precursor cell expressed, developmentally down-regulated 9

Omim ID: [602265](#)

Gene Ontology: [Hyperlink](#)

Other Cas scaffolding protein family member 2,Crk-associated substrate
Designations: related,OTTHUMP00000016030,cas-like docking,dJ49G10.2 (Enhancer of Filamentation 1 (HEF1)),dJ761I2.1 (enhancer of filamentation (HEF1)),enhancer of filamentation 1

Related Disease

[Alzheimer Disease](#) [Alzheimer disease](#) [Disease Susceptibility](#)
[Genetic Predisposition to Disease](#) [Parkinson Disease](#) [Parkinson disease](#)
[Psychiatric Status Rating Scales](#) [Tobacco Use Disorder](#)

[服務條款](#) | [隱私權政策](#) | [著作及商標](#) | [網站地圖](#)

©2016 亞諾法生技股份有限公司 Abnova Corporation. 版權所有.