



SZABO SCANDIC

Part of Europa Biosite

Produktinformation



Forschungsprodukte & Biochemikalien



Zellkultur & Verbrauchsmaterial



Diagnostik & molekulare Diagnostik



Laborgeräte & Service

Weitere Information auf den folgenden Seiten!
See the following pages for more information!



Lieferung & Zahlungsart

siehe unsere [Liefer- und Versandbedingungen](#)

Zuschläge

- Mindermengenzuschlag
- Trockeneiszuschlag
- Gefahrgutzuschlag
- Expressversand

SZABO-SCANDIC HandelsgmbH

Quellenstraße 110, A-1100 Wien

T. +43(0)1 489 3961-0

F. +43(0)1 489 3961-7

mail@szabo-scandic.com

www.szabo-scandic.com

[linkedin.com/company/szaboscandic](https://www.linkedin.com/company/szaboscandic) 

SERPINB2 (Human) IP-WB Antibody Pair

Catalog # : H00005055-PW1

規格 : [1 Set]

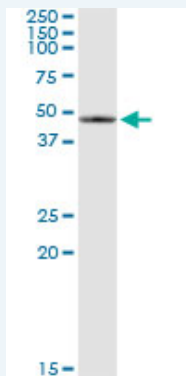
List All

Specification

Product Description: This IP-WB antibody pair set comes with one antibody for immunoprecipitation and another to detect the precipitated protein in western blot.

Reactivity: Human

Quality Control Testing: Immunoprecipitation-Western Blot (IP-WB)



Immunoprecipitation of SERPINB2 transfected lysate using mouse monoclonal anti-SERPINB2 and Protein A Magnetic Bead ([U0007](#)), and immunoblotted with rabbit polyclonal anti-SERPINB2.

Supplied Product: Antibody pair set content:
1. Antibody pair for IP: mouse monoclonal anti-SERPINB2 (300 ug)
2. Antibody pair for WB: rabbit polyclonal anti-SERPINB2 (50 ul)

Storage Instruction: Store reagents of the antibody pair set at -20°C or lower. Please aliquot to avoid repeated freeze thaw cycle. Reagents should be returned to -20°C storage immediately after use.

MSDS:  [Download](#)

Applications

Immunoprecipitation-Western Blot

 [Protocol Download](#)

Gene Information

Entrez GeneID: [5055](#)

Gene Name: SERPINB2

Gene Alias: HsT1201,PAI,PAI-2,PAI2,PLANH2

Gene Description: serpin peptidase inhibitor, clade B (ovalbumin), member 2

Omim ID: [173390](#)

Gene Ontology: [Hyperlink](#)

Application Image

Immunoprecipitation-Western Blot

Other plasminogen activator inhibitor 2, plasminogen activator inhibitor, type II
Designations: (arginine-serpin), serine (or cysteine) proteinase inhibitor, clade B
(ovalbumin), member 2

Related Disease

[Antiphospholipid Syndrome](#) [Birth Weight](#) [Carcinoma, Non-Small-Cell Lung](#)
[Cardiovascular Diseases](#) [Cerebral Palsy](#) [Diabetes Mellitus, Type 2](#) [Edema](#)
[Genetic Predisposition to Disease](#) [Glioblastoma](#) [Glioma](#) [Infant, Premature, Diseases](#)
[Kidney Failure, Chronic](#) [Leukemia](#) [Leukemia, Myeloid, Acute](#) [Lung Neoplasms](#)
[Lupus Erythematosus, Systemic](#) [Meningeal Neoplasms](#) [Meningioma](#) [Ovarian Neoplasms](#)

... see more

[服務條款](#) | [隱私權政策](#) | [著作及商標](#) | [網站地圖](#)

©2016 亞諾法生技股份有限公司 Abnova Corporation. 版權所有.