



# SZABO SCANDIC

Part of Europa Biosite

## Produktinformation



Forschungsprodukte & Biochemikalien



Zellkultur & Verbrauchsmaterial



Diagnostik & molekulare Diagnostik



Laborgeräte & Service

Weitere Information auf den folgenden Seiten!  
See the following pages for more information!



### Lieferung & Zahlungsart

siehe unsere [Liefer- und Versandbedingungen](#)

### Zuschläge

- Mindermengenzuschlag
- Trockeneiszuschlag
- Gefahrgutzuschlag
- Expressversand

### SZABO-SCANDIC HandelsgmbH

Quellenstraße 110, A-1100 Wien

T. +43(0)1 489 3961-0

F. +43(0)1 489 3961-7

[mail@szabo-scandic.com](mailto:mail@szabo-scandic.com)

[www.szabo-scandic.com](http://www.szabo-scandic.com)

[linkedin.com/company/szaboscandic](https://www.linkedin.com/company/szaboscandic) 

## SARS-CoV-2 (COVID-19) nucleocapsid FFPE 293T cell pellet Block

**Cat No. GTX435641****Application** IHC-P, IHC-P (cell pellet)**Reactivity** SARS Coronavirus 2**Species** SARS Coronavirus 2[Reference \( 2 \)](#)[Package](#)

1 block

## PRODUCT

## Summary

Block size is 2.2 x 2.2 x 0.5 cm (expected to yield ~40-50 sections of ~4-5 µm thickness), but can vary slightly. Cell pellet consists of 293T cells overexpressing SARS-CoV-2 nucleocapsid protein (full-length, N-terminal 3x DDDDK-tagged) fixed with 4% PFA (15 min, room temp) 48 hrs post-transfection, and then embedded in paraffin. Please see the corresponding overexpression cell lysate ([GTX535665](#)).

## APPLICATION

## Application Note

\*Optimal dilutions/concentrations should be determined by the researcher.

## Suggested dilution

## Dilution

IHC-P

Assay dependent

IHC-P (cell pellet)

Assay dependent

Not tested in other applications.

## PROPERTIES

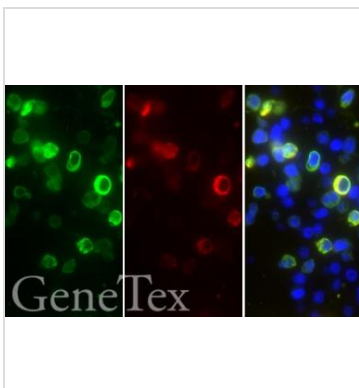
## Storage

Store at room temperature.

## Note

For laboratory use only. Not for any clinical, therapeutic, or diagnostic use in humans or animals. Not for animal or human consumption.

## DATA IMAGES

**GTX435641 IHC-P (cell pellet) Image**

SARS-CoV-2 (COVID-19) nucleocapsid antibody detects SARS-CoV-2 (COVID-19) nucleocapsid protein by immunohistochemical analysis.

Sample: Paraffin-embedded SARS-CoV-2 (COVID-19) Nucleocapsid FFPE Cell Pellet Block (GTX435641).

Green: SARS-CoV-2 (COVID-19) nucleocapsid stained by SARS-CoV-2 (COVID-19) nucleocapsid antibody (GTX135357) diluted at 1:1000.

Red: SARS-CoV / SARS-CoV-2 (COVID-19) nucleocapsid stained by SARS-CoV / SARS-CoV-2 (COVID-19) nucleocapsid antibody [6H3] (GTX632269) diluted at 1:1000.

Blue: Fluoroshield with DAPI (GTX30920).

Antigen Retrieval: Citrate buffer, pH 6.0, 15 min



For full product information, images and publications, please visit our [website](#).