



# SZABO SCANDIC

Part of Europa Biosite

## Produktinformation



Forschungsprodukte & Biochemikalien



Zellkultur & Verbrauchsmaterial



Diagnostik & molekulare Diagnostik



Laborgeräte & Service

Weitere Information auf den folgenden Seiten!  
See the following pages for more information!



### Lieferung & Zahlungsart

siehe unsere [Liefer- und Versandbedingungen](#)

### Zuschläge

- Mindermengenzuschlag
- Trockeneiszuschlag
- Gefahrgutzuschlag
- Expressversand

### SZABO-SCANDIC HandelsgmbH

Quellenstraße 110, A-1100 Wien

T. +43(0)1 489 3961-0

F. +43(0)1 489 3961-7

[mail@szabo-scandic.com](mailto:mail@szabo-scandic.com)

[www.szabo-scandic.com](http://www.szabo-scandic.com)

[linkedin.com/company/szaboscandic](https://www.linkedin.com/company/szaboscandic)

# ATF1 MaxPab mouse polyclonal antibody (B01) MaxPab®

Catalog # : H00000466-B01

規格 : [ 50 uL ]

[List All](#)

## Specification

**Product Description:** Mouse polyclonal antibody raised against a full-length human ATF1 protein.

**Immunogen:** ATF1 (NP\_005162.1, 1 a.a. ~ 271 a.a) full-length human protein.

**Sequence:**  
 MEDSHKSTTSETAPQPGSAVQGAHISHIAQQVSSLSESEESQDSSDSIGS  
 SQKAHGILARRPSYRKILKDLSSDTRGRKGDGENSGVSAAVTSMVPT  
 PIYQTSSGQYIAIPNGALQLASPGTDGVQGLQTLTMTNSGSTQQGTTIL  
 QYAQTS DGQQLVPSNQVVQTASGDMQTYQIRTPSATSLPQTVVMT  
 SPVTLTSQTTKTDDPQLKREIRLMKNREAARECRRKKKEYVKLENRVA  
 VLENQNKTLIEELKTLKDLYSNKSV

**Host:** Mouse

**Reactivity:** Human

**Quality Control Testing:** Antibody reactive against mammalian transfected lysate.

**Storage Buffer:** No additive

**Storage Instruction:** Store at -20°C or lower. Aliquot to avoid repeated freezing and thawing.

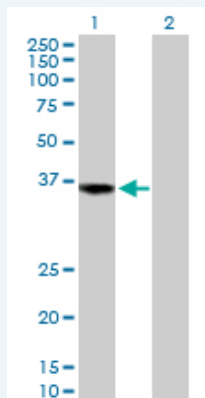
**Note:** For IHC and IF applications, antibody purification with Protein A will be needed prior to use.

**MSDS:** [Download](#)

**Datasheet:** [Download](#)

## Applications

### Western Blot (Transfected lysate)



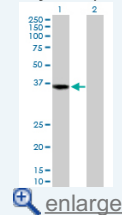
Western Blot analysis of ATF1 expression in transfected 293T cell line (H00000466-T02) by ATF1 MaxPab polyclonal antibody.

Lane 1: ATF1 transfected lysate(29.20 KDa).

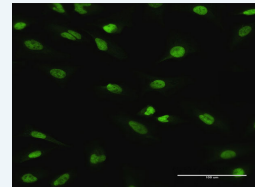
Lane 2: Non-transfected lysate.

## Application Image

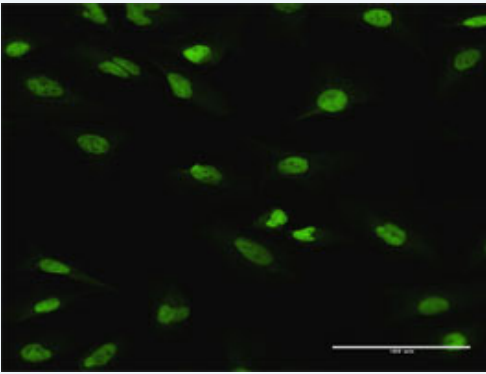
### Western Blot (Transfected lysate)




### Immunofluorescence



### Immunofluorescence



 enlarge this image

Immunofluorescence of purified MaxPab antibody to ATF1 on HeLa cell. [antibody concentration 10 ug/ml]

### Gene Information

**Entrez GeneID:** [466](#)

**GeneBank Accession#:** [NM\\_005171](#)

**Protein Accession#:** [NP\\_005162.1](#)

**Gene Name:** ATF1

**Gene Alias:** EWS-ATF1,FUS/ATF-1,TREB36

**Gene Description:** activating transcription factor 1

**Omim ID:** [123803](#)

**Gene Ontology:** [Hyperlink](#)

**Other Designations:** -

### Related Disease

[Adenocarcinoma](#) [Breast cancer](#) [Breast Neoplasms](#) [Cardiovascular Diseases](#)  
[Diabetes Mellitus, Type 2](#) [Edema](#) [Esophageal Neoplasms](#)  
[Genetic Predisposition to Disease](#) [Ovarian Neoplasms](#)