



SZABO SCANDIC

Part of Europa Biosite

Produktinformation



Forschungsprodukte & Biochemikalien



Zellkultur & Verbrauchsmaterial



Diagnostik & molekulare Diagnostik



Laborgeräte & Service

Weitere Information auf den folgenden Seiten!
See the following pages for more information!



Lieferung & Zahlungsart

siehe unsere [Liefer- und Versandbedingungen](#)

Zuschläge

- Mindermengenzuschlag
- Trockeneiszuschlag
- Gefahrgutzuschlag
- Expressversand

SZABO-SCANDIC HandelsgmbH

Quellenstraße 110, A-1100 Wien

T. +43(0)1 489 3961-0

F. +43(0)1 489 3961-7

mail@szabo-scandic.com

www.szabo-scandic.com

[linkedin.com/company/szaboscandic](https://www.linkedin.com/company/szaboscandic) 

ATF1 purified MaxPab mouse polyclonal antibody (B01P) MaxPab®

Catalog # : H00000466-B01P

規格 : [50 ug]

[List All](#)

Specification

Product Description: Mouse polyclonal antibody raised against a full-length human ATF1 protein.

Immunogen: ATF1 (NP_005162.1, 1 a.a. ~ 271 a.a) full-length human protein.

Sequence:
 MEDSHKSTTSETAPQPGSAVQGAHISHIAQQVSSLSESEESQDSSDSIGS
 SQKAHGILARRPSYRKILKDLSSDTRGRKGDGENSGVSAAVTSMVPT
 PIYQTSSGQYIAIAPNGALQLASPGTDGVQGLQTLTMTNSGSTQQGTTIL
 QYAQTS DGQQLVPSNQVVVQTASGDMQTYQIRTPSATSLPQTVVMT
 SPVTLTSQTTKTDDPQLKREIRLMKNREAARECRRKKKEYVKLENRVA
 VLENQNKT LIEELKTLKDLYSNKS V

Host: Mouse

Reactivity: Human

Quality Control Testing: Antibody reactive against mammalian transfected lysate.

Storage Buffer: In 1x PBS, pH 7.4

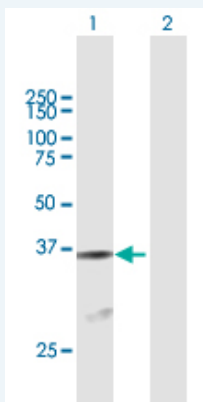
Storage Instruction: Store at -20°C or lower. Aliquot to avoid repeated freezing and thawing.

MSDS: [Download](#)

Datasheet: [Download](#)

Applications

Western Blot (Transfected lysate)



Western Blot analysis of ATF1 expression in transfected 293T cell line ([H00000466-T02](#)) by ATF1 MaxPab polyclonal antibody.

Lane 1: ATF1 transfected lysate(29.20 KDa).

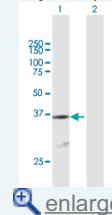
Lane 2: Non-transfected lysate.

[Protocol Download](#)

Immunofluorescence

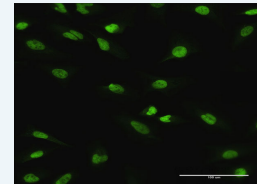
Application Image

Western Blot (Transfected lysate)

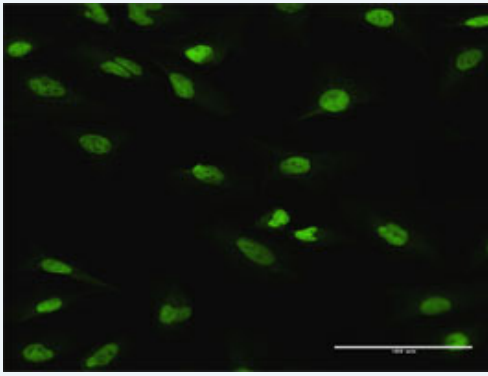


[enlarge](#)

Immunofluorescence



[enlarge](#)



[enlarge this image](#)

Immunofluorescence of purified MaxPab antibody to ATF1 on HeLa cell. [antibody concentration 10 ug/ml]

 [Protocol Download](#)

Gene Information

Entrez GeneID: [466](#)

GeneBank Accession#: [NM_005171.2](#)

Protein Accession#: [NP_005162.1](#)

Gene Name: ATF1

Gene Alias: EWS-ATF1,FUS/ATF-1,TREB36

Gene Description: activating transcription factor 1

Omim ID: [123803](#)

Gene Ontology: [Hyperlink](#)

Other Designations: -

Related Disease

[Adenocarcinoma](#) [Breast cancer](#) [Breast Neoplasms](#) [Cardiovascular Diseases](#)
[Diabetes Mellitus, Type 2](#) [Edema](#) [Esophageal Neoplasms](#)
[Genetic Predisposition to Disease](#) [Ovarian Neoplasms](#)

[服務條款](#) | [隱私權政策](#) | [著作及商標](#) | [網站地圖](#)

©2016 亞諾法生技股份有限公司 Abnova Corporation. 版權所有.