



SZABO SCANDIC

Part of Europa Biosite

Produktinformation



Forschungsprodukte & Biochemikalien



Zellkultur & Verbrauchsmaterial



Diagnostik & molekulare Diagnostik



Laborgeräte & Service

Weitere Information auf den folgenden Seiten!
See the following pages for more information!



Lieferung & Zahlungsart

siehe unsere [Liefer- und Versandbedingungen](#)

Zuschläge

- Mindermengenzuschlag
- Trockeneiszuschlag
- Gefahrgutzuschlag
- Expressversand

SZABO-SCANDIC HandelsgmbH

Quellenstraße 110, A-1100 Wien

T. +43(0)1 489 3961-0

F. +43(0)1 489 3961-7

mail@szabo-scandic.com

www.szabo-scandic.com

[linkedin.com/company/szaboscandic](https://www.linkedin.com/company/szaboscandic) 



ATF1 purified MaxPab rabbit polyclonal antibody (D01P) MaxPab®

Catalog # : H00000466-D01P

規格 : [100 ug]

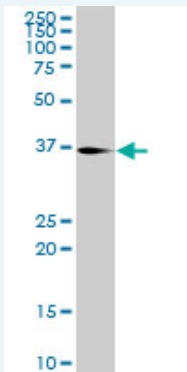
[List All](#)

Specification

Product Description:	Rabbit polyclonal antibody raised against a full-length human ATF1 protein.
Immunogen:	ATF1 (NP_005162.1, 1 a.a. ~ 271 a.a) full-length human protein.
Sequence:	MEDSHKSTTSETAPQPGSAVQGAHISHIAQQVSSLSESEESQDSSDSIGS SQAHGILARRPSYRKILKDLSSDTRGRKGDGENSGVSAAVTSMVPT PIYQTSSGQYIAIPNGALQLASPGTDGVQGLQTLTMTNSGSTQQGTTIL QYAQTS DGQQILVPSNQVVQTASGDMQTYQIRTPSATSLPQTVVMT SPVTLTSQTTKTDDPQLKREIRLMKNREAARECRRKKKEYVKLENRVA VLENQNKTLIEELKTLKDLYSNKSV
Host:	Rabbit
Reactivity:	Human, Mouse, Rat
Quality Control Testing:	Antibody reactive against mammalian transfected lysate.
Storage Buffer:	In 1x PBS, pH 7.4
Storage Instruction:	Store at -20°C or lower. Aliquot to avoid repeated freezing and thawing.
MSDS:	 Download
Datasheet:	 Download

Applications

Western Blot (Tissue lysate)



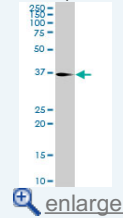
ATF1 MaxPab rabbit polyclonal antibody. Western Blot analysis of ATF1 expression in mouse brain.

 [Protocol Download](#)

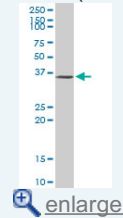
Western Blot (Cell lysate)

Application Image

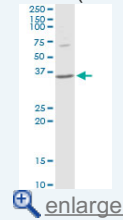
Western Blot (Tissue lysate)



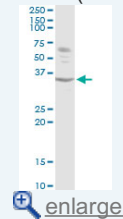
Western Blot (Cell lysate)



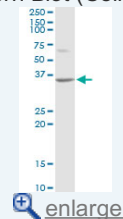
Western Blot (Cell lysate)



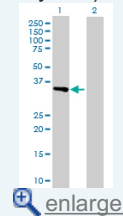
Western Blot (Cell lysate)

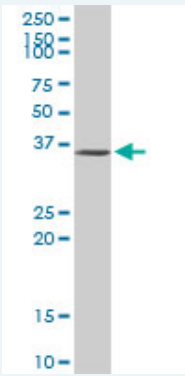


Western Blot (Cell lysate)



Western Blot (Transfected lysate)

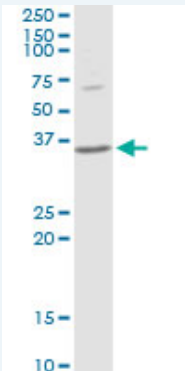




ATF1 MaxPab rabbit polyclonal antibody. Western Blot analysis of ATF1 expression in HeLa.

 [Protocol Download](#)

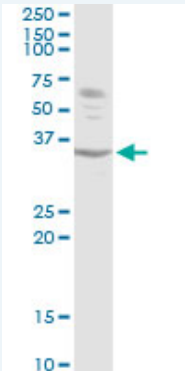
Western Blot (Cell lysate)



ATF1 MaxPab rabbit polyclonal antibody. Western Blot analysis of ATF1 expression in PC-12.

 [Protocol Download](#)

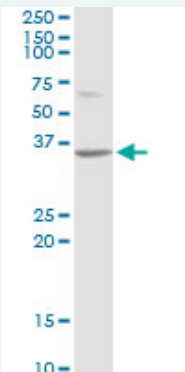
Western Blot (Cell lysate)



ATF1 MaxPab rabbit polyclonal antibody. Western Blot analysis of ATF1 expression in Raw 264.7.

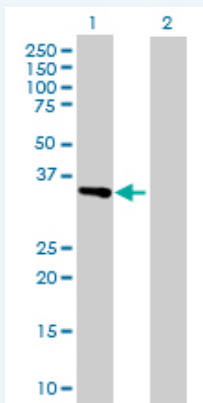
 [Protocol Download](#)

Western Blot (Cell lysate)



ATF1 MaxPab rabbit polyclonal antibody. Western Blot analysis of ATF1 expression in NIH/3T3.

Western Blot (Transfected lysate)



Western Blot analysis of ATF1 expression in transfected 293T cell line ([H00000466-T01](#)) by ATF1 MaxPab polyclonal antibody.

Lane 1: ATF1 transfected lysate(29.20 KDa).

Lane 2: Non-transfected lysate.

Gene Information

Entrez GeneID: [466](#)

GeneBank Accession#: [NM_005171](#)

Protein Accession#: [NP_005162.1](#)

Gene Name: ATF1

Gene Alias: EWS-ATF1,FUS/ATF-1,TREB36

Gene Description: activating transcription factor 1

Omim ID: [123803](#)

Gene Ontology: [Hyperlink](#)

Other Designations: -

Related Disease

[Adenocarcinoma](#) [Breast cancer](#) [Breast Neoplasms](#) [Cardiovascular Diseases](#)
[Diabetes Mellitus, Type 2](#) [Edema](#) [Esophageal Neoplasms](#)
[Genetic Predisposition to Disease](#) [Ovarian Neoplasms](#)