



SZABO SCANDIC

Part of Europa Biosite

Produktinformation



Forschungsprodukte & Biochemikalien



Zellkultur & Verbrauchsmaterial



Diagnostik & molekulare Diagnostik



Laborgeräte & Service

Weitere Information auf den folgenden Seiten!
See the following pages for more information!



Lieferung & Zahlungsart

siehe unsere [Liefer- und Versandbedingungen](#)

Zuschläge

- Mindermengenzuschlag
- Trockeneiszuschlag
- Gefahrgutzuschlag
- Expressversand

SZABO-SCANDIC HandelsgmbH

Quellenstraße 110, A-1100 Wien

T. +43(0)1 489 3961-0

F. +43(0)1 489 3961-7

mail@szabo-scandic.com

www.szabo-scandic.com

[linkedin.com/company/szaboscandic](https://www.linkedin.com/company/szaboscandic) 

ATF1 monoclonal antibody (M03), clone 3E7

Catalog # : H00000466-M03

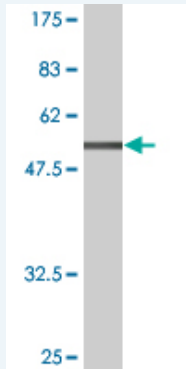
規格 : [100 ug]

[List All](#)

Specification

Product Description:	Mouse monoclonal antibody raised against a full-length recombinant ATF1.
Immunogen:	ATF1 (AAH29619, 1 a.a. ~ 271 a.a) full-length recombinant protein with GST tag. MW of the GST tag alone is 26 KDa.
Sequence:	MEDSHKSTTSETAPQPGSAVQGAHISHIAQQVSSLSESEESQDSSDSIGS SQKAHGILARRPSYRKILKDLSSDTRGRKGDGENSGVSAAVTSMSVPT PIYQTSSGQYIAIPNGALQLASPGTDGVQGLQTLTMTNSGSTQQGTTIL QYAQTSQGQQLVPSNQVVQTASGDMQTYQIRTPSATSLPQTVVMT SPVTLTSQTTKTDDPQLKREIRLMKNREAARECRRKKKEYVKLENRVA VLENQNKTLIEELKTLKDLYSNKS
Host:	Mouse
Reactivity:	Human
Isotype:	IgG1 Kappa

Quality Control Testing: Antibody Reactive Against Recombinant Protein.



Western Blot detection against Immunogen (55.55 KDa) .

Storage Buffer: In 1x PBS, pH 7.4

Storage Instruction: Store at -20°C or lower. Aliquot to avoid repeated freezing and thawing.

MSDS: [Download](#)

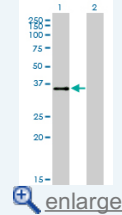
Datasheet: [Download](#)

Applications

Western Blot (Transfected lysate)

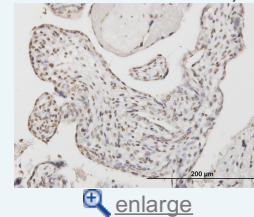
Application Image

Western Blot (Transfected lysate)

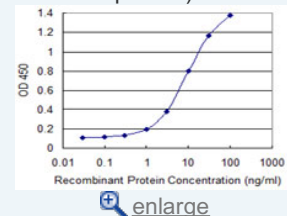


Western Blot (Recombinant protein)

Immunohistochemistry (Formalin/PFA-fixed paraffin-embedded sections)

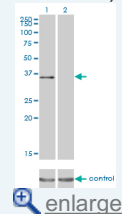


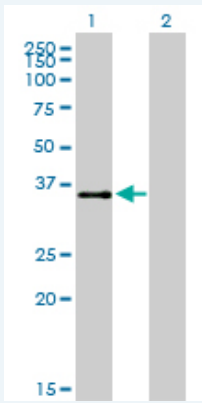
Sandwich ELISA (Recombinant protein)



ELISA

RNAi Knockdown (Antibody validated)





Western Blot analysis of ATF1 expression in transfected 293T cell line by ATF1 monoclonal antibody (M03), clone 3E7.

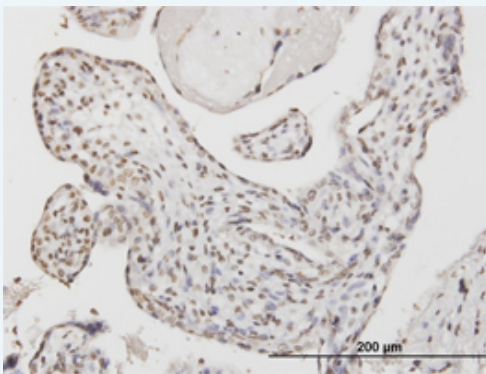
Lane 1: ATF1 transfected lysate(29.2 KDa).
Lane 2: Non-transfected lysate.

[Protocol Download](#)

Western Blot (Recombinant protein)

[Protocol Download](#)

Immunohistochemistry (Formalin/PFA-fixed paraffin-embedded sections)

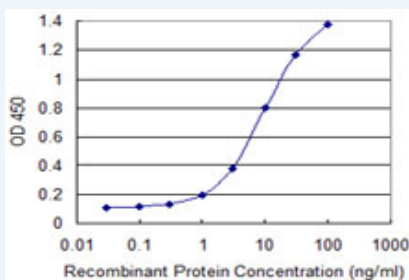


[enlarge this image](#)

Immunoperoxidase of monoclonal antibody to ATF1 on formalin-fixed paraffin-embedded human placenta. [antibody concentration 3 ug/ml]

[Protocol Download](#)

Sandwich ELISA (Recombinant protein)

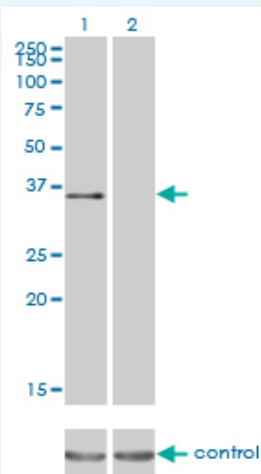


Detection limit for recombinant GST tagged ATF1 is 0.3 ng/ml as a capture antibody.

[Protocol Download](#)

ELISA

RNAi Knockdown (Antibody validated)



Western blot analysis of ATF1 over-expressed 293 cell line, cotransfected with ATF1 Validated Chimera RNAi (Cat # H00000466-R01V) (Lane 2) or non-transfected control (Lane 1). Blot probed with ATF1 monoclonal antibody (M03), clone 3E7 (Cat # H00000466-M03). GAPDH (36.1 kDa) used as specificity and loading control.

 [Protocol Download](#)

Gene Information

Entrez GeneID: [466](#)

GeneBank [BC029619](#)

Accession#:

Protein [AAH29619](#)

Accession#:

Gene Name: ATF1

Gene Alias: EWS-ATF1,FUS/ATF-1,TREB36

Gene Description: activating transcription factor 1

Omim ID: [123803](#)

Gene Ontology: [Hyperlink](#)

Other -

Designations:

Related Disease

[Adenocarcinoma](#) [Breast cancer](#) [Breast Neoplasms](#) [Cardiovascular Diseases](#)
[Diabetes Mellitus, Type 2](#) [Edema](#) [Esophageal Neoplasms](#)
[Genetic Predisposition to Disease](#) [Ovarian Neoplasms](#)