



SZABO SCANDIC

Part of Europa Biosite

Produktinformation



Forschungsprodukte & Biochemikalien



Zellkultur & Verbrauchsmaterial



Diagnostik & molekulare Diagnostik



Laborgeräte & Service

Weitere Information auf den folgenden Seiten!
See the following pages for more information!



Lieferung & Zahlungsart

siehe unsere [Liefer- und Versandbedingungen](#)

Zuschläge

- Mindermengenzuschlag
- Trockeneiszuschlag
- Gefahrgutzuschlag
- Expressversand

SZABO-SCANDIC HandelsgmbH

Quellenstraße 110, A-1100 Wien

T. +43(0)1 489 3961-0

F. +43(0)1 489 3961-7

mail@szabo-scandic.com

www.szabo-scandic.com

[linkedin.com/company/szaboscandic](https://www.linkedin.com/company/szaboscandic) 

ATF4 purified MaxPab rabbit polyclonal antibody (D01P) MaxPab®

Catalog # : H00000468-D01P

規格 : [100 ug]

[List All](#)

Specification

Product Description: Rabbit polyclonal antibody raised against a full-length human ATF4 protein.

Immunogen: ATF4 (NP_001666.2, 1 a.a. ~ 351 a.a) full-length human protein.

Sequence:
 MTEMSFLSSEVLVGDLMSPFDQSGLGAEESLGLDDYLEVAKHFKPHG
 FSSDKAKAGSSEWLAVDGLVSPSNNSKEDAFSGTDWMLEKMDLKEFDL
 DALLGIDDLTLPDILLTLLDDTCDLFAPLVQETNKQPPQTVNPIGHLPE
 SLTKPDQVAPFTFLQPLPLSPGVLSSPDHFSLELGSEVDITEGDRKPD
 YTAYVAMIPQCIKEEDTPSDNDSGICMSPESYLGSPQHSPSTRGSPNRS
 PSPGVLCGSARPKPYDPPGEKMVAKVKGKLDKLLKMEQNKTAATR
 YRQKKRAEQEALTGECKELEKKNEALKERADSLAKEIYKDLIEEVRKA
 RGKKRVP

Host: Rabbit

Reactivity: Human

Quality Control Testing: Antibody reactive against mammalian transfected lysate.

Storage Buffer: In 1x PBS, pH 7.4

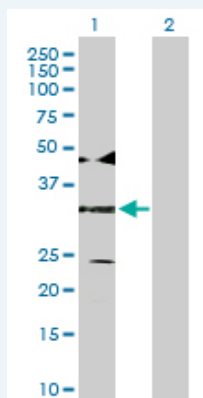
Storage Instruction: Store at -20°C or lower. Aliquot to avoid repeated freezing and thawing.

MSDS: [Download](#)

Datasheet: [Download](#)

Applications

Western Blot (Transfected lysate)



Western Blot analysis of ATF4 expression in transfected 293T cell line ([H00000468-T02](#)) by ATF4 MaxPab polyclonal antibody.

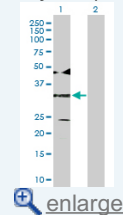
Lane 1: ATF4 transfected lysate(38.60 KDa).

Lane 2: Non-transfected lysate.

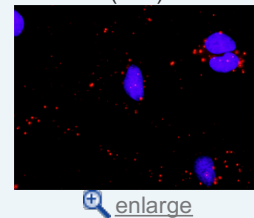
[Protocol Download](#)

Application Image

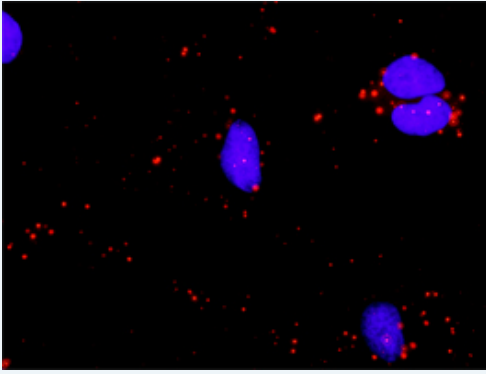
Western Blot (Transfected lysate)



In situ Proximity Ligation Assay (Cell)



In situ Proximity Ligation Assay (Cell)



Proximity Ligation Analysis of protein-protein interactions between ATF4 and CREBBP. HeLa cells were stained with anti-ATF4 rabbit purified polyclonal 1:1200 and anti-CREBBP mouse monoclonal antibody 1:50. Each red dot represents the detection of protein-protein interaction complex, and nuclei were counterstained with DAPI (blue).

Gene Information

Entrez GeneID: [468](#)

GeneBank Accession#: [NM_001675.2](#)

Protein Accession#: [NP_001666.2](#)

Gene Name: ATF4

Gene Alias: CREB-2, CREB2, TAXREB67, TXREB

Gene Description: activating transcription factor 4 (tax-responsive enhancer element B67)

Omim ID: [604064](#)

Gene Ontology: [Hyperlink](#)

Gene Summary: This gene encodes a transcription factor that was originally identified as a widely expressed mammalian DNA binding protein that could bind a tax-responsive enhancer element in the LTR of HTLV-1. The encoded protein was also isolated and characterized as the cAMP-response element binding protein 2 (CREB-2). The protein encoded by this gene belongs to a family of DNA-binding proteins that includes the AP-1 family of transcription factors, cAMP-response element binding proteins (CREBs) and CREB-like proteins. These transcription factors share a leucine zipper region that is involved in protein-protein interactions, located C-terminal to a stretch of basic amino acids that functions as a DNA binding domain. Two alternative transcripts encoding the same protein have been described. Two pseudogenes are located on the X chromosome at q28 in a region containing a large inverted duplication. [provided by RefSeq]

Other Designations: activating transcription factor 4, cAMP response element-binding protein 2

Gene Pathway

[GnRH signaling pathway](#) [Long-term potentiation](#) [MAPK signaling pathway](#)
[Neurotrophin signaling pathway](#) [Prostate cancer](#)

Related Disease

[Bipolar Disorder](#) [Genetic Predisposition to Disease](#) [Mental Disorders](#)
[Neuropsychological Tests](#) [Schizophrenia](#) [Schizophrenia](#)

[服務條款](#) | [隱私權政策](#) | [著作及商標](#) | [網站地圖](#)

©2016 亞諾法生技股份有限公司 Abnova Corporation. 版權所有.