



SZABO SCANDIC

Part of Europa Biosite

Produktinformation



Forschungsprodukte & Biochemikalien



Zellkultur & Verbrauchsmaterial



Diagnostik & molekulare Diagnostik



Laborgeräte & Service

Weitere Information auf den folgenden Seiten!
See the following pages for more information!



Lieferung & Zahlungsart

siehe unsere [Liefer- und Versandbedingungen](#)

Zuschläge

- Mindermengenzuschlag
- Trockeneiszuschlag
- Gefahrgutzuschlag
- Expressversand

SZABO-SCANDIC HandelsgmbH

Quellenstraße 110, A-1100 Wien

T. +43(0)1 489 3961-0

F. +43(0)1 489 3961-7

mail@szabo-scandic.com

www.szabo-scandic.com

[linkedin.com/company/szaboscandic](https://www.linkedin.com/company/szaboscandic) 

ATF4 monoclonal antibody (M01), clone 2B3

產品編號 #: H00000468-M01

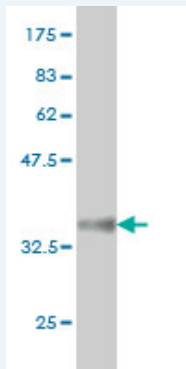
規格 : [100 ug]

[List All](#)

Specification

Product Description:	Mouse monoclonal antibody raised against a partial recombinant ATF4.
Immunogen:	ATF4 (NP_001666.2, 171 a.a. ~ 270 a.a) partial recombinant protein with GST tag. MW of the GST tag alone is 26 KDa.
Sequence:	SSTPDHSFSLELGSEVDITEGDRKPDYTAYVAMIPQCIKEEDTPSDNDSGI CMSPESYLGSPQHSPSTRGSPNRSPLSPGVLCGSARPKPYDPPGEKMW A
Host:	Mouse
Reactivity:	Human
Isotype:	IgG1 Kappa

Quality Control Testing: Antibody Reactive Against Recombinant Protein.



Western Blot detection against Immunogen (36.74 KDa) .

Storage Buffer: In 1x PBS, pH 7.4

Storage Instruction: Store at -20°C or lower. Aliquot to avoid repeated freezing and thawing.

MSDS: [Download](#)

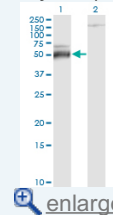
Datasheet: [Download](#)

Publication Reference

1. A Protective Role of Heme-Regulated eIF2 α kinase in Cadmium-Induced Toxicity in Erythroid Cells.
Wang L, Wang X, Zhang S, Qu G, Liu S Food Chem Toxicol. 2013 Oct 22;62C:880-891. doi: 10.1016/j.fct.2013.10.017.
2. Decreased vitamin B12 availability induces ER stress through impaired SIRT1-deacetylation of HSF1.
Ghemrawi R, Pooya S, Lorentz S, Gauchotte G, Arnold C, Gueant JL, Battaglia-Hsu SFCell Death Dis. 2013 Mar 21;4:e553. doi: 10.1038/cddis.2013.69.
3. Heme-regulated eIF2 α kinase activated Atf4 signaling pathway in oxidative stress and

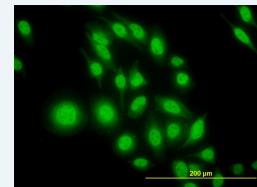
Application Image

Western Blot (Transfected lysate)

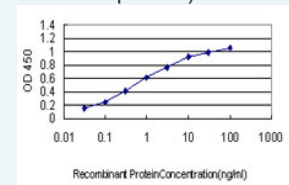


Western Blot (Recombinant protein)

Immunofluorescence



Sandwich ELISA (Recombinant protein)



[enlarge](#)

ELISA

erythropoiesis.

Suragani RN, Zachariah RS, Velazquez JG, Liu S, Sun CW, Townes TM, Chen JJ. Blood. 2012 May 31;119(22):5276-84. Epub 2012 Apr 12.

4. 12/15-Lipoxygenase signaling in the endoplasmic reticulum stress response.

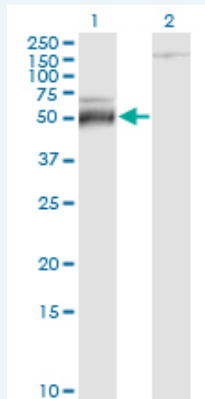
Cole BK, Kuhn NS, Green-Mitchell SM, Leone KA, Raab RM, Nadler JL, Chakrabarti SK. Am J Physiol Endocrinol Metab. 2012 Mar;302(6):E654-65. Epub 2012 Jan 3.

5. Calcium Channel Blocker Verapamil Enhances Endoplasmic Reticulum Stress and Cell Death Induced by Proteasome Inhibition in Myeloma Cells.

Meister S, Frey B, Lang VR, Gaipf US, Schett G, Schlotzer-Schrehardt U, Voll RE. Neoplasia. 2010 Jul;12(7):550-61.

Applications

Western Blot (Transfected lysate)



Western Blot analysis of ATF4 expression in transfected 293T cell line by ATF4 monoclonal antibody (M01), clone 2B3.

Lane 1: ATF4 transfected lysate (38.6 KDa).

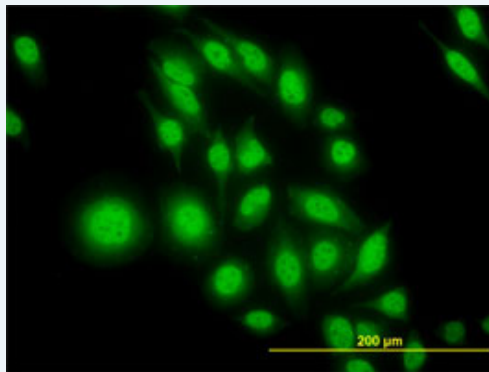
Lane 2: Non-transfected lysate.

[Protocol Download](#)

Western Blot (Recombinant protein)

[Protocol Download](#)

Immunofluorescence

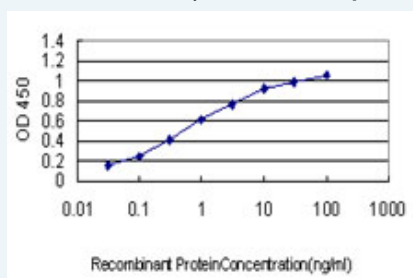


[enlarge this image](#)

Immunofluorescence of monoclonal antibody to ATF4 on HeLa cell. [antibody concentration 10 ug/ml]

[Protocol Download](#)

Sandwich ELISA (Recombinant protein)



Detection limit for recombinant GST tagged ATF4 is approximately 0.03ng/ml as a capture antibody.

[Protocol Download](#)

ELISA

Gene Information

Entrez GeneID: [468](#)

GeneBank Accession#: [NM_001675](#)

Protein Accession#: [NP_001666.2](#)

Gene Name: ATF4

Gene Alias: CREB-2, CREB2, TAXREB67, TXREB

Gene Description: activating transcription factor 4 (tax-responsive enhancer element B67)

Omim ID: [604064](#)

Gene Ontology: [Hyperlink](#)

Gene Summary: This gene encodes a transcription factor that was originally identified as a widely expressed mammalian DNA binding protein that could bind a tax-responsive enhancer element in the LTR of HTLV-1. The encoded protein was also isolated and characterized as the cAMP-response element binding protein 2 (CREB-2). The protein encoded by this gene belongs to a family of DNA-binding proteins that includes the AP-1 family of transcription factors, cAMP-response element binding proteins (CREBs) and CREB-like proteins. These transcription factors share a leucine zipper region that is involved in protein-protein interactions, located C-terminal to a stretch of basic amino acids that functions as a DNA binding domain. Two alternative transcripts encoding the same protein have been described. Two pseudogenes are located on the X chromosome at q28 in a region containing a large inverted duplication. [provided by RefSeq]

Other Designations: activating transcription factor 4, cAMP response element-binding protein 2

Gene Pathway

[GnRH signaling pathway](#) [Long-term potentiation](#) [MAPK signaling pathway](#)
[Neurotrophin signaling pathway](#) [Prostate cancer](#)

Related Disease

[Bipolar Disorder](#) [Genetic Predisposition to Disease](#) [Mental Disorders](#)
[Neuropsychological Tests](#) [Schizophrenia](#) [Schizophrenia](#)