



SZABO SCANDIC

Part of Europa Biosite

Produktinformation



Forschungsprodukte & Biochemikalien



Zellkultur & Verbrauchsmaterial



Diagnostik & molekulare Diagnostik



Laborgeräte & Service

Weitere Information auf den folgenden Seiten!
See the following pages for more information!



Lieferung & Zahlungsart

siehe unsere [Liefer- und Versandbedingungen](#)

Zuschläge

- Mindermengenzuschlag
- Trockeneiszuschlag
- Gefahrgutzuschlag
- Expressversand

SZABO-SCANDIC HandelsgmbH

Quellenstraße 110, A-1100 Wien

T. +43(0)1 489 3961-0

F. +43(0)1 489 3961-7

mail@szabo-scandic.com

www.szabo-scandic.com

[linkedin.com/company/szaboscandic](https://www.linkedin.com/company/szaboscandic) 

ATF4 monoclonal antibody (M07), clone 2E3

產品編號 # : H00000468-M07

規格 : [100 ug]

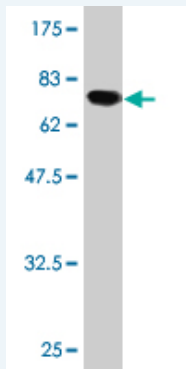
[List All](#)

Specification

Product Description:	Mouse monoclonal antibody raised against a full-length recombinant ATF4.
Immunogen:	ATF4 (AAH08090, 1 a.a. ~ 351 a.a) full-length recombinant protein with GST tag. MW of the GST tag alone is 26 KDa.
Sequence:	MTEMSFLSSEVLVGDLMSPFDPSTGLGAEESLGLDDYLEVAKHFKPHGF SSDKAKAGSSEWLAVDGLVSPSNNSKEDAFSGTDWMLEKMDLKEFDLD ALLGIDDLTLPDLDLTTLDLDCDLFAPLVQETNKQPPQTVNPIGHPES LTKPDQVAPFTFLQPPPLSPGVLSSSTPDHSFSLGSEVDITEGDRKPDY TAYVAMIPQCIKEEDTPSDNDSGICMSPESYLGSPQHSPSTRGSPNRSPL SPGVLGCGSARPKPYDPPGKEMVAKVKGEKLDKLLKMEQNKTAATRY RQKKRAEQEALTGECKELEKKNEALKERADSLAKEIQYLKDLIEEVRKAR GKKRVP
Host:	Mouse
Reactivity:	Human
Isotype:	IgG2a Kappa

Quality Control Antibody Reactive Against Recombinant Protein.

Testing:



Western Blot detection against Immunogen (64.35 KDa) .

Storage Buffer: In 1x PBS, pH 7.4

Storage Instruction: Store at -20°C or lower. Aliquot to avoid repeated freezing and thawing.

MSDS: [Download](#)

Datasheet: [Download](#)

Applications

Western Blot (Recombinant protein)

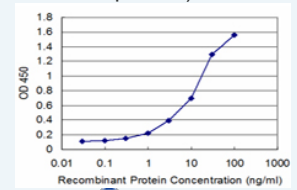
[Protocol Download](#)

Sandwich ELISA (Recombinant protein)

Application Image

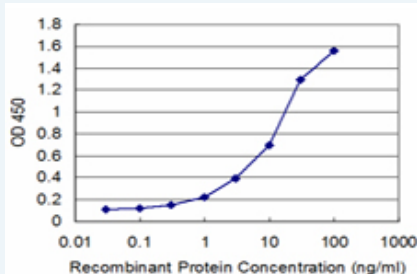
Western Blot (Recombinant protein)

Sandwich ELISA (Recombinant protein)



[enlarge](#)

ELISA



Detection limit for recombinant GST tagged ATF4 is approximately 0.3ng/ml as a capture antibody.

[Protocol Download](#)

ELISA

Gene Information

Entrez GeneID: [468](#)

GeneBank [BC008090](#)
Accession#:

Protein [AAH08090](#)
Accession#:

Gene Name: ATF4

Gene Alias: CREB-2, CREB2, TAXREB67, TXREB

Gene Description: activating transcription factor 4 (tax-responsive enhancer element B67)

Omim ID: [604064](#)

Gene Ontology: [Hyperlink](#)

Gene Summary: This gene encodes a transcription factor that was originally identified as a widely expressed mammalian DNA binding protein that could bind a tax-responsive enhancer element in the LTR of HTLV-1. The encoded protein was also isolated and characterized as the cAMP-response element binding protein 2 (CREB-2). The protein encoded by this gene belongs to a family of DNA-binding proteins that includes the AP-1 family of transcription factors, cAMP-response element binding proteins (CREBs) and CREB-like proteins. These transcription factors share a leucine zipper region that is involved in protein-protein interactions, located C-terminal to a stretch of basic amino acids that functions as a DNA binding domain. Two alternative transcripts encoding the same protein have been described. Two pseudogenes are located on the X chromosome at q28 in a region containing a large inverted duplication. [provided by RefSeq]

Other Designations: activating transcription factor 4, cAMP response element-binding protein 2

Gene Pathway

[GnRH signaling pathway](#) [Long-term potentiation](#) [MAPK signaling pathway](#)
[Neurotrophin signaling pathway](#) [Prostate cancer](#)

Related Disease

[Bipolar Disorder](#) [Genetic Predisposition to Disease](#) [Mental Disorders](#)
[Neuropsychological Tests](#) [Schizophrenia](#) [Schizophrenia](#)

