



SZABO SCANDIC

Part of Europa Biosite

Produktinformation



Forschungsprodukte & Biochemikalien



Zellkultur & Verbrauchsmaterial



Diagnostik & molekulare Diagnostik



Laborgeräte & Service

Weitere Information auf den folgenden Seiten!
See the following pages for more information!



Lieferung & Zahlungsart

siehe unsere [Liefer- und Versandbedingungen](#)

Zuschläge

- Mindermengenzuschlag
- Trockeneiszuschlag
- Gefahrgutzuschlag
- Expressversand

SZABO-SCANDIC HandelsgmbH

Quellenstraße 110, A-1100 Wien

T. +43(0)1 489 3961-0

F. +43(0)1 489 3961-7

mail@szabo-scandic.com

www.szabo-scandic.com

[linkedin.com/company/szaboscandic](https://www.linkedin.com/company/szaboscandic) 

ATF4 293T Cell Transient Overexpression Lysate(Denatured)

Catalog # : H00000468-T02

規格 : [100 uL]

List All

Specification

Transfected Cell Line: 293T

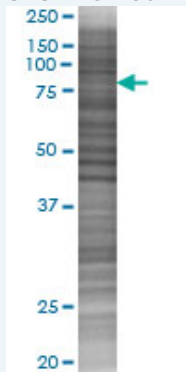
Plasmid: pCMV-ATF4 full-length

Host: Human

Theoretical MW (kDa): 38.6

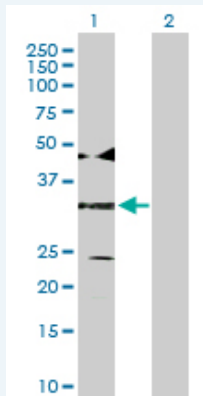
Quality Control Testing: Transient overexpression cell lysate was tested with Anti-ATF4 antibody (H00000468-D01P) by Western Blots.

SDS-PAGE Gel



ATF4 transfected lysate.

Western Blot



Lane 1: ATF4 transfected lysate (38.60 KDa)

Lane 2: Non-transfected lysate.

Storage Buffer: 1X Sample Buffer (50 mM Tris-HCl, 2% SDS, 10% glycerol, 300 mM 2-mercaptoethanol, 0.01% Bromophenol blue)

Storage Instruction: Store at -80°C. Aliquot to avoid repeated freezing and thawing.

MSDS:  [Download](#)

Applications

Application Image

Western Blot

Western Blot

Gene Information

Entrez GeneID: [468](#)

GeneBank [NM_001675.2](#)
Accession#:

Protein [NP_001666.2](#)
Accession#:

Gene Name: ATF4

Gene Alias: CREB-2, CREB2, TAXREB67, TXREB

Gene Description: activating transcription factor 4 (tax-responsive enhancer element B67)

Omim ID: [604064](#)

Gene Ontology: [Hyperlink](#)

Gene Summary: This gene encodes a transcription factor that was originally identified as a widely expressed mammalian DNA binding protein that could bind a tax-responsive enhancer element in the LTR of HTLV-1. The encoded protein was also isolated and characterized as the cAMP-response element binding protein 2 (CREB-2). The protein encoded by this gene belongs to a family of DNA-binding proteins that includes the AP-1 family of transcription factors, cAMP-response element binding proteins (CREBs) and CREB-like proteins. These transcription factors share a leucine zipper region that is involved in protein-protein interactions, located C-terminal to a stretch of basic amino acids that functions as a DNA binding domain. Two alternative transcripts encoding the same protein have been described. Two pseudogenes are located on the X chromosome at q28 in a region containing a large inverted duplication. [provided by RefSeq]

Other Designations: activating transcription factor 4, cAMP response element-binding protein 2

Gene Pathway

[GnRH signaling pathway](#) [Long-term potentiation](#) [MAPK signaling pathway](#)
[Neurotrophin signaling pathway](#) [Prostate cancer](#)

Related Disease

[Bipolar Disorder](#) [Genetic Predisposition to Disease](#) [Mental Disorders](#)
[Neuropsychological Tests](#) [Schizophrenia](#) [Schizophrenia](#)