



# SZABO SCANDIC

Part of Europa Biosite

## Produktinformation



Forschungsprodukte & Biochemikalien



Zellkultur & Verbrauchsmaterial



Diagnostik & molekulare Diagnostik



Laborgeräte & Service

Weitere Information auf den folgenden Seiten!  
See the following pages for more information!



### Lieferung & Zahlungsart

siehe unsere [Liefer- und Versandbedingungen](#)

### Zuschläge

- Mindermengenzuschlag
- Trockeneiszuschlag
- Gefahrgutzuschlag
- Expressversand

### SZABO-SCANDIC HandelsgmbH

Quellenstraße 110, A-1100 Wien

T. +43(0)1 489 3961-0

F. +43(0)1 489 3961-7

[mail@szabo-scandic.com](mailto:mail@szabo-scandic.com)

[www.szabo-scandic.com](http://www.szabo-scandic.com)

[linkedin.com/company/szaboscandic](https://www.linkedin.com/company/szaboscandic) 



## ATM monoclonal antibody (M05), clone 2C10

Catalog # : H00000472-M05

規格 : [ 100 ug ]

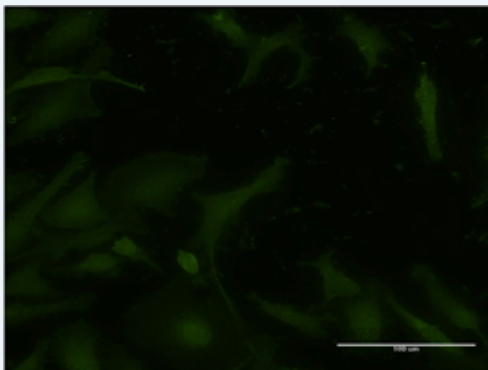
[List All](#)


### Specification

<b>Product Description:</b>	Mouse monoclonal antibody raised against a full-length recombinant ATM.
<b>Immunogen:</b>	ATM (AAH07023.1, 1 a.a. ~ 138 a.a) full-length recombinant protein with GST tag. MW of the GST tag alone is 26 KDa.
<b>Sequence:</b>	MTLHEPANSSASQSTDLCDFSGDLDPAPNPPHFPSHVVKATFAYISNCHK TKLKSILEILSKSPDSYQKILLAICEQAAETNNVYKKHRILKIYHLFVSLLLKDI KSGLGGAWAFVLRDVIYTLIHYINQRKLTIFSQ
<b>Host:</b>	Mouse
<b>Reactivity:</b>	Human
<b>Isotype:</b>	IgG2a Kappa
<b>Quality Control Testing:</b>	Antibody Reactive Against Recombinant Protein.
<b>Storage Buffer:</b>	In 1x PBS, pH 7.4
<b>Storage Instruction:</b>	Store at -20°C or lower. Aliquot to avoid repeated freezing and thawing.
<b>MSDS:</b>	 <a href="#">Download</a>
<b>Datasheet:</b>	 <a href="#">Download</a>

### Applications

#### Immunofluorescence



 [enlarge this image](#)

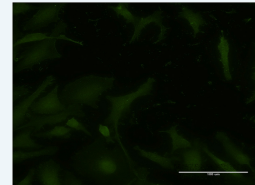
Immunofluorescence of monoclonal antibody to ATM on HeLa cell . [antibody concentration 10 ug/ml]


 [Protocol Download](#)

#### Sandwich ELISA (Recombinant protein)

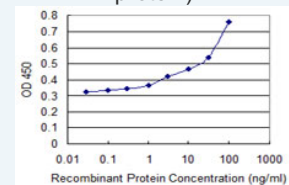
### Application Image

#### Immunofluorescence



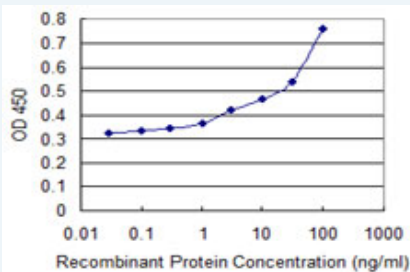
 [enlarge](#)

#### Sandwich ELISA (Recombinant protein)



 [enlarge](#)

ELISA



Detection limit for recombinant GST tagged ATM is 1 ng/ml as a capture antibody.

 [Protocol Download](#)

## ELISA

### Gene Information

Entrez GeneID: [472](#)

GeneBank [BC007023.1](#)

Accession#:

Protein [AAH07023.1](#)

Accession#:

Gene Name: ATM

Gene Alias: AT1,ATA,ATC,ATD,ATDC,ATE,DKFZp781A0353,MGC74674,TEL1,TEL01

Gene ataxia telangiectasia mutated

Description:

Omim ID: [114480](#), [208900](#), [607585](#)

Gene Ontology: [Hyperlink](#)

**Gene Summary:** The protein encoded by this gene belongs to the PI3/PI4-kinase family. This protein is an important cell cycle checkpoint kinase that phosphorylates; thus, it functions as a regulator of a wide variety of downstream proteins, including tumor suppressor proteins p53 and BRCA1, checkpoint kinase CHK2, checkpoint proteins RAD17 and RAD9, and DNA repair protein NBS1. This protein and the closely related kinase ATR are thought to be master controllers of cell cycle checkpoint signaling pathways that are required for cell response to DNA damage and for genome stability. Mutations in this gene are associated with ataxia telangiectasia, an autosomal recessive disorder. Two transcript variants encoding different isoforms have been found for this gene. [provided by RefSeq]

**Other Designations:** AT mutated,TEL1, telomere maintenance 1, homolog,ataxia telangiectasia mutated (includes complementation groups A, C and D),ataxia telangiectasia mutated protein,human phosphatidylinositol 3-kinase homolog,serine-protein kinase ATM

### Gene Pathway

[Apoptosis](#) [Cell cycle](#) [p53 signaling pathway](#)

### Related Disease

[Acute Disease](#) [Adenocarcinoma](#) [Ataxia Telangiectasia](#) [Ataxia telangiectasia](#) [Atherosclerosis](#) [Brain Neoplasms](#) [Breast cancer](#) [Breast Neoplasms](#) [Carcinoma](#) [Carcinoma, Ductal, Breast](#) [Carcinoma, Lobular](#) [Carcinoma, Non-Small-Cell Lung](#) [Carcinoma, Pancreatic Ductal](#) [Carcinoma, Squamous Cell](#) [Cardiovascular Diseases](#) [Chromosome Aberrations](#) [Cocarcinogenesis](#) [Colorectal Neoplasms](#) [Colorectal Neoplasms, Hereditary Nonpolyposis](#)

[... see more](#)

---

[服務條款](#) | [隱私權政策](#) | [著作及商標](#) | [網站地圖](#)

©2016 亞諾法生技股份有限公司 Abnova Corporation. 版權所有.