



# SZABO SCANDIC

Part of Europa Biosite

## Produktinformation



Forschungsprodukte & Biochemikalien



Zellkultur & Verbrauchsmaterial



Diagnostik & molekulare Diagnostik



Laborgeräte & Service

Weitere Information auf den folgenden Seiten!  
See the following pages for more information!



### Lieferung & Zahlungsart

siehe unsere [Liefer- und Versandbedingungen](#)

### Zuschläge

- Mindermengenzuschlag
- Trockeneiszuschlag
- Gefahrgutzuschlag
- Expressversand

### SZABO-SCANDIC HandelsgmbH

Quellenstraße 110, A-1100 Wien

T. +43(0)1 489 3961-0

F. +43(0)1 489 3961-7

[mail@szabo-scandic.com](mailto:mail@szabo-scandic.com)

[www.szabo-scandic.com](http://www.szabo-scandic.com)

[linkedin.com/company/szaboscandic](https://www.linkedin.com/company/szaboscandic) 

## RERE monoclonal antibody (M06), clone 2F2

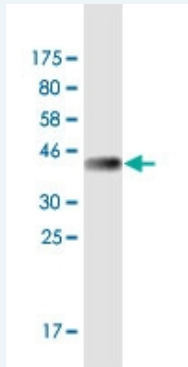
Catalog # : H00000473-M06

規格 : [ 100 ug ]

[List All](#)

### Specification

<b>Product Description:</b>	Mouse monoclonal antibody raised against a partial recombinant RERE.
<b>Immunogen:</b>	RERE (NP_036234.2, 85 a.a. ~ 193 a.a) partial recombinant protein with GST tag. MW of the GST tag alone is 26 KDa.
<b>Sequence:</b>	RYERTDTGEITSYITEDDWYRPGDCVYIVCRRPNTPYFICSIQDFKLVHN SQACCRSPTPALCDPPACSLPVASQPPQHLSEAGRGPVGSKRDLHMN VKWYYRQSEV
<b>Host:</b>	Mouse
<b>Reactivity:</b>	Human
<b>Isotype:</b>	IgG2a Kappa
<b>Quality Control Testing:</b>	Antibody Reactive Against Recombinant Protein.



Western Blot detection against Immunogen (37.73 KDa) .

**Storage Buffer:** In 1x PBS, pH 7.4

**Storage Instruction:** Store at -20°C or lower. Aliquot to avoid repeated freezing and thawing.

**MSDS:** [Download](#)

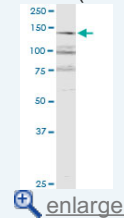
**Datasheet:** [Download](#)

### Applications

Western Blot (Cell lysate)

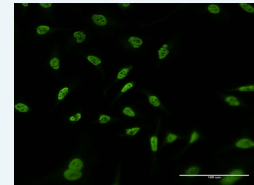
### Application Image

Western Blot (Cell lysate)

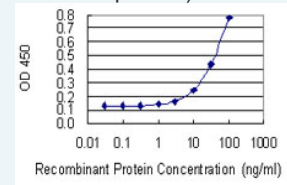


Western Blot (Recombinant protein)

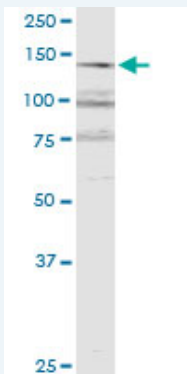
Immunofluorescence



Sandwich ELISA (Recombinant protein)



ELISA



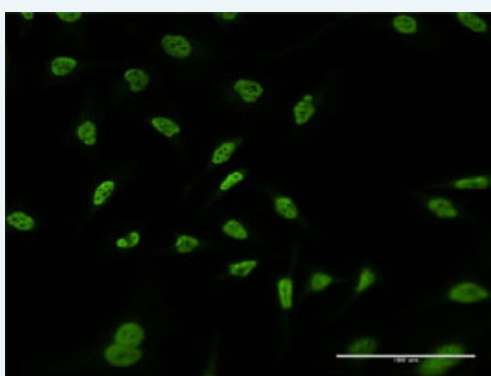
RERE monoclonal antibody (M06), clone 2F2. Western Blot analysis of RERE expression in Jurkat.

[Protocol Download](#)

#### Western Blot (Recombinant protein)

[Protocol Download](#)

#### Immunofluorescence

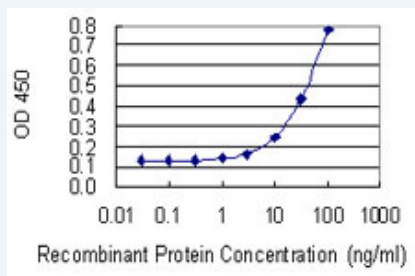


[enlarge this image](#)

Immunofluorescence of monoclonal antibody to RERE on HeLa cell . [antibody concentration 10 ug/ml]

[Protocol Download](#)

#### Sandwich ELISA (Recombinant protein)



Detection limit for recombinant GST tagged RERE is 3 ng/ml as a capture antibody.

[Protocol Download](#)

#### ELISA

#### Gene Information

Entrez GeneID: [473](#)

GeneBank [NM\\_012102](#)

Accession#:

Protein [NP\\_036234.2](#)

Accession#:

Gene Name: RERE

Gene Alias: ARG,ARP,ATN1L,DNB1,FLJ38775,KIAA0458

**Gene** arginine-glutamic acid dipeptide (RE) repeats  
**Description:**

**Omim ID:** [605226](#)

**Gene Ontology:** [Hyperlink](#)

**Gene Summary:** This gene encodes a member of the atrophin family of arginine-glutamic acid (RE) dipeptide repeat-containing proteins. The encoded protein co-localizes with a transcription factor in the nucleus, and its overexpression triggers apoptosis. A similar protein in mouse associates with histone deacetylase and is thought to function as a transcriptional co-repressor during embryonic development. Multiple transcript variants encoding different isoforms have been found for this gene. [provided by RefSeq]

**Other Designations:** OTTHUMP00000001701,atrophin 2,atrophin-1 like protein,atrophin-1 related protein

#### **Related Disease**

[Autoimmune Diseases](#) [Genetic Predisposition to Disease](#) [Melanoma](#) [Osteoporosis](#)  
[Tobacco Use Disorder](#) [Vitiligo](#)

[服務條款](#) | [隱私權政策](#) | [著作及商標](#) | [網站地圖](#)

©2016 亞諾法生技股份有限公司 Abnova Corporation. 版權所有.