



SZABO SCANDIC

Part of Europa Biosite

Produktinformation



Forschungsprodukte & Biochemikalien



Zellkultur & Verbrauchsmaterial



Diagnostik & molekulare Diagnostik



Laborgeräte & Service

Weitere Information auf den folgenden Seiten!
See the following pages for more information!



Lieferung & Zahlungsart

siehe unsere [Liefer- und Versandbedingungen](#)

Zuschläge

- Mindermengenzuschlag
- Trockeneiszuschlag
- Gefahrgutzuschlag
- Expressversand

SZABO-SCANDIC HandelsgmbH

Quellenstraße 110, A-1100 Wien

T. +43(0)1 489 3961-0

F. +43(0)1 489 3961-7

mail@szabo-scandic.com

www.szabo-scandic.com

[linkedin.com/company/szaboscandic](https://www.linkedin.com/company/szaboscandic) 

ATOH1 purified MaxPab mouse polyclonal antibody (B01P) MaxPab®

Catalog # : H00000474-B01P

規格 : [50 ug]

[List All](#)

Specification

Product Description: Mouse polyclonal antibody raised against a full-length human ATOH1 protein.

Immunogen: ATOH1 (NP_005163.1, 1 a.a. ~ 354 a.a) full-length human protein.

Sequence:
 MSRLLHAEWEAEVKELGDHHRQPQHHLQPPPPPPQPPATLQAREHPV
 YPELSELLDSTDPRAWLAPTLLQGICTARAAQYLLHSPELGASEAAAPRD
 EVDGRGELVRRSSGGASSSKSPGPVKVREQLCKLGGVVDELGCSR
 QRAPSSKQVNGVQKQRRLAANARERRRMHGLNHAFDQLRNVIPSFNND
 KKLSKYETLQMAQIYNALSELLQTPSGGEQPPPPASCKSDHHHLRTAA
 SYEGGAGNATAAGAQQASGGSQRPTPPGSCRTRFSAPASAGGYSVQL
 DALHFSTFEDSALTAMMAQKNLSPSLPGSILQPVQEENSKTSPRSHRSD
 GEFSPHSHYSDSDEAS

Host: Mouse

Reactivity: Human

Quality Control Testing: Antibody reactive against mammalian transfected lysate.

Storage Buffer: In 1x PBS, pH 7.4

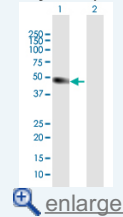
Storage Instruction: Store at -20°C or lower. Aliquot to avoid repeated freezing and thawing.

MSDS: [Download](#)

Datasheet: [Download](#)

Application Image

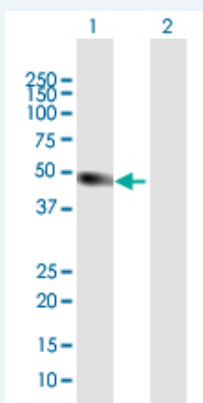
Western Blot (Transfected lysate)



[enlarge](#)

Applications

Western Blot (Transfected lysate)



Western Blot analysis of ATOH1 expression in transfected 293T cell line ([H00000474-T01](#)) by ATOH1 MaxPab polyclonal antibody.

Lane 1: ATOH1 transfected lysate(38.94 KDa).

Lane 2: Non-transfected lysate.

[Protocol Download](#)

Gene Information

Entrez GeneID: [474](#)

**GeneBank
Accession#:** [NM_005172.1](#)

**Protein
Accession#:** [NP_005163.1](#)

Gene Name: ATOH1

Gene Alias: ATH1,HATH1,MATH-1,bHLHa14

**Gene
Description:** atonal homolog 1 (Drosophila)

Omim ID: [601461](#)

Gene Ontology: [Hyperlink](#)

Gene Summary: This protein belongs to the basic helix-loop-helix (BHLH) family of transcription factors. It activates E-box dependent transcription along with E47. [provided by RefSeq]

**Other
Designations:** atonal homolog 1

[服務條款](#) | [隱私權政策](#) | [著作及商標](#) | [網站地圖](#)

©2016 亞諾法生技股份有限公司 Abnova Corporation. 版權所有.