

ATOX1 monoclonal antibody (M02), clone 3A2

Catalog # : H00000475-M02

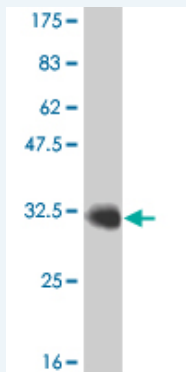
規格 : [100 ug]

[List All](#)

Specification

Product Description:	Mouse monoclonal antibody raised against a partial recombinant ATOX1.
Immunogen:	ATOX1 (NP_004036, 1 a.a. ~ 68 a.a) partial recombinant protein with GST tag. MW of the GST tag alone is 26 KDa.
Sequence:	MPKHEFSVDMTCGGCAEAVSRVLNKLGGVKYDIDLPNKKVCI ESEHSMD TLLATLKKTKGKT VSYLGLE
Host:	Mouse
Reactivity:	Human
Isotype:	IgG2a Kappa

Quality Control Testing: Antibody Reactive Against Recombinant Protein.



Western Blot detection against Immunogen (33.22 KDa) .

Storage Buffer: In 1x PBS, pH 7.4

Storage Instruction: Store at -20°C or lower. Aliquot to avoid repeated freezing and thawing.

MSDS: [Download](#)

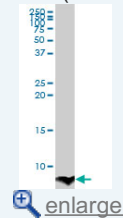
Datasheet: [Download](#)

Applications

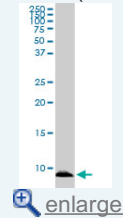
Western Blot (Tissue lysate)

Application Image

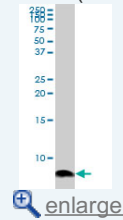
Western Blot (Tissue lysate)



Western Blot (Cell lysate)

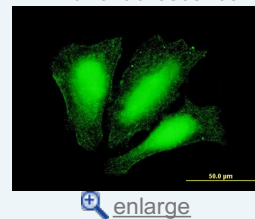


Western Blot (Cell lysate)

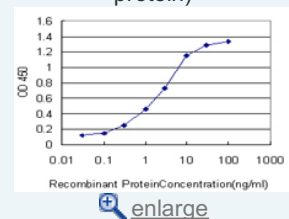


Western Blot (Recombinant protein)

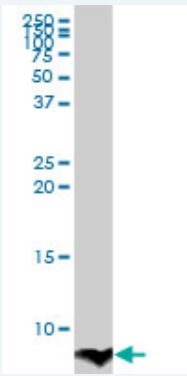
Immunofluorescence



Sandwich ELISA (Recombinant protein)



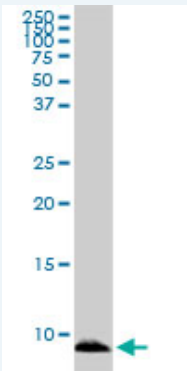
ELISA



ATOX1 monoclonal antibody (M02), clone 3A2. Western Blot analysis of ATOX1 expression in human spleen.

 [Protocol Download](#)

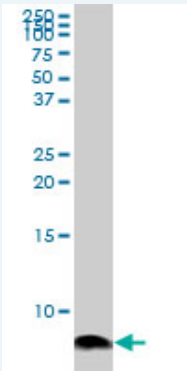
Western Blot (Cell lysate)



ATOX1 monoclonal antibody (M02), clone 3A2. Western Blot analysis of ATOX1 expression in COLO 320 HSR (Cat # L020V1).

 [Protocol Download](#)

Western Blot (Cell lysate)



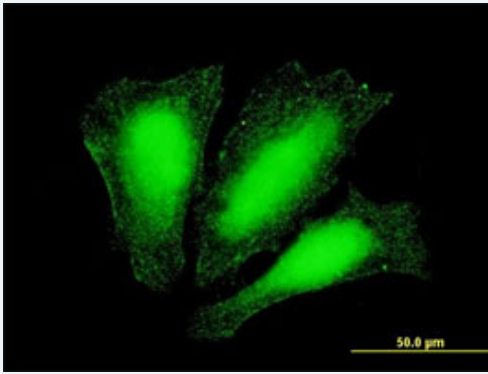
ATOX1 monoclonal antibody (M02), clone 3A2. Western Blot analysis of ATOX1 expression in Jurkat (Cat # L017V1).

 [Protocol Download](#)

Western Blot (Recombinant protein)

 [Protocol Download](#)

Immunofluorescence

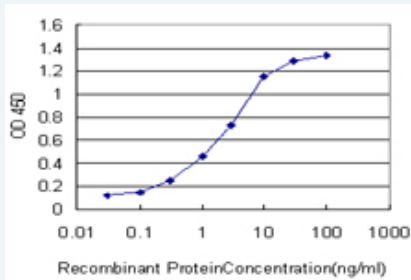


[enlarge this image](#)

Immunofluorescence of monoclonal antibody to ATOX1 on HeLa cell . [antibody concentration 10 ug/ml]

[Protocol Download](#)

Sandwich ELISA (Recombinant protein)



Detection limit for recombinant GST tagged ATOX1 is approximately 0.1ng/ml as a capture antibody.

[Protocol Download](#)

ELISA

Gene Information

Entrez GeneID: [475](#)

GeneBank Accession#: [NM_004045](#)

Protein Accession#: [NP_004036](#)

Gene Name: ATOX1

Gene Alias: ATX1,HAH1,MGC138453,MGC138455

Gene Description: ATX1 antioxidant protein 1 homolog (yeast)

Omim ID: [602270](#)

Gene Ontology: [Hyperlink](#)

Gene Summary: This gene encodes a copper chaperone that plays a role in copper homeostasis by binding and transporting cytosolic copper to ATPase proteins in the trans-Golgi network for later incorporation to the ceruloplasmin. This protein also functions as an antioxidant against superoxide and hydrogen peroxide, and therefore, may play a significant role in cancer carcinogenesis. Because of its cytogenetic location, this gene represents a candidate gene for 5q-syndrome. [provided by RefSeq]

Other Designations: antioxidant protein 1,copper transport protein,metal transport protein

Related Disease

[Genetic Predisposition to Disease](#) [Hepatolenticular Degeneration](#) [Wilson's disease](#)

[服務條款](#) | [隱私權政策](#) | [著作及商標](#) | [網站地圖](#)

©2016 亞諾法生技股份有限公司 Abnova Corporation. 版權所有.