



SZABO SCANDIC

Part of Europa Biosite

Produktinformation



Forschungsprodukte & Biochemikalien



Zellkultur & Verbrauchsmaterial



Diagnostik & molekulare Diagnostik



Laborgeräte & Service

Weitere Information auf den folgenden Seiten!
See the following pages for more information!



Lieferung & Zahlungsart

siehe unsere [Liefer- und Versandbedingungen](#)

Zuschläge

- Mindermengenzuschlag
- Trockeneiszuschlag
- Gefahrgutzuschlag
- Expressversand

SZABO-SCANDIC HandelsgmbH

Quellenstraße 110, A-1100 Wien

T. +43(0)1 489 3961-0

F. +43(0)1 489 3961-7

mail@szabo-scandic.com

www.szabo-scandic.com

[linkedin.com/company/szaboscandic](https://www.linkedin.com/company/szaboscandic) 

ATOX1 monoclonal antibody (M04), clone 3G11

Catalog # : H00000475-M04

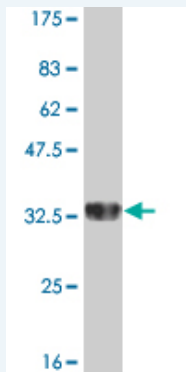
規格 : [100 ug]

[List All](#)

Specification

| | |
|-----------------------------|---|
| Product Description: | Mouse monoclonal antibody raised against a partial recombinant ATOX1. |
| Immunogen: | ATOX1 (NP_004036, 1 a.a. ~ 68 a.a) partial recombinant protein with GST tag. MW of the GST tag alone is 26 KDa. |
| Sequence: | MPKHEFSVDMTCGGCAEAVSRVLNKLGGVKYDIDLPNKKVCI ESEHSMD TLLATLKKKTGKT VSYLGLE |
| Host: | Mouse |
| Reactivity: | Human |
| Isotype: | IgG |

Quality Control Testing: Antibody Reactive Against Recombinant Protein.



Western Blot detection against Immunogen (33.22 KDa) .

Storage Buffer: In 1x PBS, pH 7.4

Storage Instruction: Store at -20°C or lower. Aliquot to avoid repeated freezing and thawing.

MSDS: [Download](#)

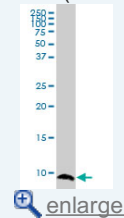
Datasheet: [Download](#)

Applications

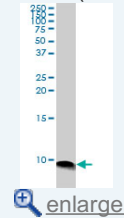
Western Blot (Tissue lysate)

Application Image

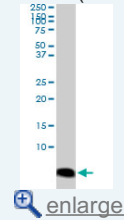
Western Blot (Tissue lysate)



Western Blot (Cell lysate)

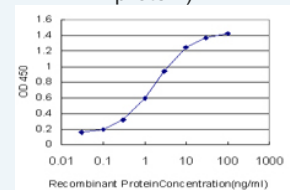


Western Blot (Cell lysate)



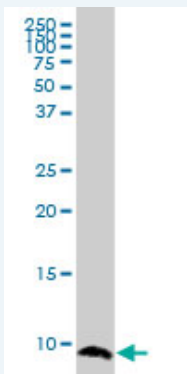
Western Blot (Recombinant protein)

Sandwich ELISA (Recombinant protein)



[enlarge](#)

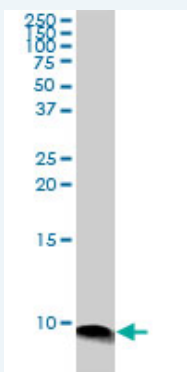
ELISA



ATOX1 monoclonal antibody (M04), clone 3G11. Western Blot analysis of ATOX1 expression in human kidney.

[Protocol Download](#)

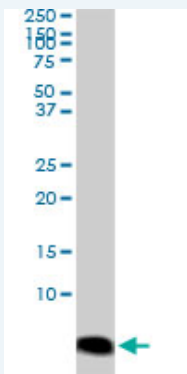
Western Blot (Cell lysate)



ATOX1 monoclonal antibody (M04), clone 3G11. Western Blot analysis of ATOX1 expression in HepG2 (Cat # L019V1).

[Protocol Download](#)

Western Blot (Cell lysate)



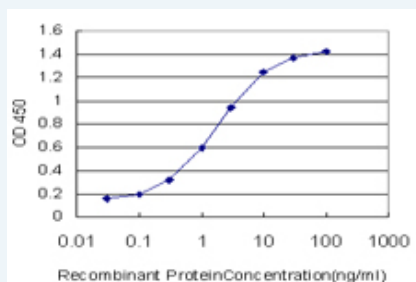
ATOX1 monoclonal antibody (M04), clone 3G11. Western Blot analysis of ATOX1 expression in COLO 320 HSR (Cat # L020V1).

[Protocol Download](#)

Western Blot (Recombinant protein)

[Protocol Download](#)

Sandwich ELISA (Recombinant protein)



Detection limit for recombinant GST tagged ATOX1 is approximately 0.1ng/ml as a capture antibody.

ELISA

Gene Information

Entrez GeneID: [475](#)**GeneBank
Accession#:** [NM_004045](#)**Protein
Accession#:** [NP_004036](#)**Gene Name:** ATOX1**Gene Alias:** ATX1,HAH1,MGC138453,MGC138455**Gene
Description:** ATX1 antioxidant protein 1 homolog (yeast)**Omim ID:** [602270](#)**Gene Ontology:** [Hyperlink](#)**Gene Summary:** This gene encodes a copper chaperone that plays a role in copper homeostasis by binding and transporting cytosolic copper to ATPase proteins in the trans-Golgi network for later incorporation to the ceruloplasmin. This protein also functions as an antioxidant against superoxide and hydrogen peroxide, and therefore, may play a significant role in cancer carcinogenesis. Because of its cytogenetic location, this gene represents a candidate gene for 5q-syndrome. [provided by RefSeq]**Other
Designations:** antioxidant protein 1,copper transport protein,metal transport protein**Related Disease**

[Genetic Predisposition to Disease](#) [Hepatolenticular Degeneration](#) [Wilson's disease](#)