



SZABO SCANDIC

Part of Europa Biosite

Produktinformation



Forschungsprodukte & Biochemikalien



Zellkultur & Verbrauchsmaterial



Diagnostik & molekulare Diagnostik



Laborgeräte & Service

Weitere Information auf den folgenden Seiten!
See the following pages for more information!



Lieferung & Zahlungsart

siehe unsere [Liefer- und Versandbedingungen](#)

Zuschläge

- Mindermengenzuschlag
- Trockeneiszuschlag
- Gefahrgutzuschlag
- Expressversand

SZABO-SCANDIC HandelsgmbH

Quellenstraße 110, A-1100 Wien

T. +43(0)1 489 3961-0

F. +43(0)1 489 3961-7

mail@szabo-scandic.com

www.szabo-scandic.com

[linkedin.com/company/szaboscandic](https://www.linkedin.com/company/szaboscandic) 

ATOX1 monoclonal antibody (M08), clone 4D6

Catalog # : H00000475-M08

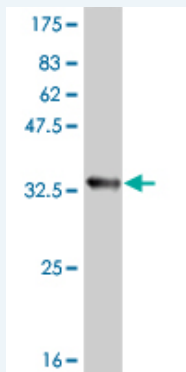
規格 : [100 ug]

[List All](#)

Specification

Product Description:	Mouse monoclonal antibody raised against a partial recombinant ATOX1.
Immunogen:	ATOX1 (NP_004036, 1 a.a. ~ 68 a.a) partial recombinant protein with GST tag. MW of the GST tag alone is 26 KDa.
Sequence:	MPKHEFSVDMTCGGCAEAVSRVLNKLGGVKYDIDLPNKKVCI ESEHSMD TLLATLKKTKGKT VSYLGLE
Host:	Mouse
Reactivity:	Human
Isotype:	IgG2a Kappa

Quality Control Testing: Antibody Reactive Against Recombinant Protein.



Storage Buffer: In 1x PBS, pH 7.4

Storage Instruction: Store at -20°C or lower. Aliquot to avoid repeated freezing and thawing.

MSDS: [Download](#)

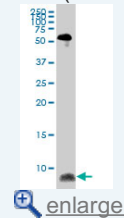
Datasheet: [Download](#)

Applications

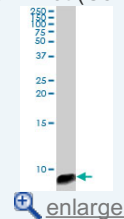
Western Blot (Tissue lysate)

Application Image

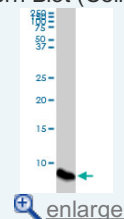
Western Blot (Tissue lysate)



Western Blot (Cell lysate)

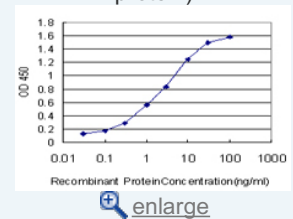


Western Blot (Cell lysate)

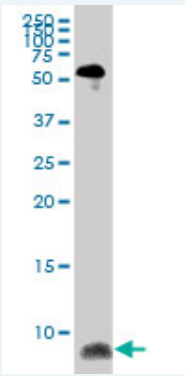


Western Blot (Recombinant protein)

Sandwich ELISA (Recombinant protein)



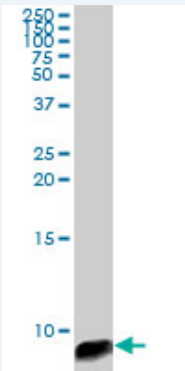
ELISA



ATOX1 monoclonal antibody (M08), clone 4D6. Western Blot analysis of ATOX1 expression in human spleen.

[Protocol Download](#)

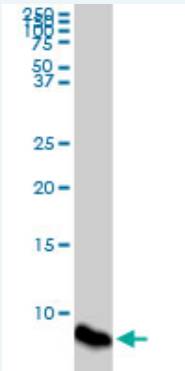
Western Blot (Cell lysate)



ATOX1 monoclonal antibody (M08), clone 4D6. Western Blot analysis of ATOX1 expression in HepG2 (Cat # L019V1).

[Protocol Download](#)

Western Blot (Cell lysate)



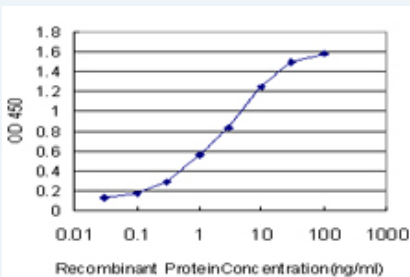
ATOX1 monoclonal antibody (M08), clone 4D6. Western Blot analysis of ATOX1 expression in COLO 320 HSR (Cat # L020V1).

[Protocol Download](#)

Western Blot (Recombinant protein)

[Protocol Download](#)

Sandwich ELISA (Recombinant protein)



Detection limit for recombinant GST tagged ATOX1 is approximately 0.03ng/ml as a capture antibody.

ELISA

Gene Information

Entrez GeneID: [475](#)**GeneBank
Accession#:** [NM_004045](#)**Protein
Accession#:** [NP_004036](#)**Gene Name:** ATOX1**Gene Alias:** ATX1,HAH1,MGC138453,MGC138455**Gene
Description:** ATX1 antioxidant protein 1 homolog (yeast)**Omim ID:** [602270](#)**Gene Ontology:** [Hyperlink](#)**Gene Summary:** This gene encodes a copper chaperone that plays a role in copper homeostasis by binding and transporting cytosolic copper to ATPase proteins in the trans-Golgi network for later incorporation to the ceruloplasmin. This protein also functions as an antioxidant against superoxide and hydrogen peroxide, and therefore, may play a significant role in cancer carcinogenesis. Because of its cytogenetic location, this gene represents a candidate gene for 5q-syndrome. [provided by RefSeq]**Other
Designations:** antioxidant protein 1,copper transport protein,metal transport protein**Related Disease**

[Genetic Predisposition to Disease](#) [Hepatolenticular Degeneration](#) [Wilson's disease](#)