



SZABO SCANDIC

Part of Europa Biosite

Produktinformation



Forschungsprodukte & Biochemikalien



Zellkultur & Verbrauchsmaterial



Diagnostik & molekulare Diagnostik



Laborgeräte & Service

Weitere Information auf den folgenden Seiten!
See the following pages for more information!



Lieferung & Zahlungsart

siehe unsere [Liefer- und Versandbedingungen](#)

Zuschläge

- Mindermengenzuschlag
- Trockeneiszuschlag
- Gefahrgutzuschlag
- Expressversand

SZABO-SCANDIC HandelsgmbH

Quellenstraße 110, A-1100 Wien

T. +43(0)1 489 3961-0

F. +43(0)1 489 3961-7

mail@szabo-scandic.com

www.szabo-scandic.com

[linkedin.com/company/szaboscandic](https://www.linkedin.com/company/szaboscandic) 

ATP12A polyclonal antibody (A01)

Catalog # : H00000479-A01

規格 : [50 uL]

[List All](#)

Specification

Product Description: Mouse polyclonal antibody raised against a partial recombinant ATP12A.

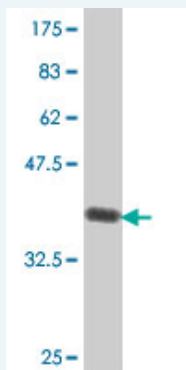
Immunogen: ATP12A (NP_001667, 174 a.a. ~ 281 a.a) partial recombinant protein with GST tag.

Sequence: SSFNKMIPQQALVIRDSEKKTIPSEQLVGDIVEVKGGDQIPADIRVLSSQ
GCRVDNSSLTGESEPQPRSEFTHENPLETKNICFYSTTCLEASTSPVG
TVTGMVIN

Host: Mouse

Reactivity: Human

Quality Control Testing: Antibody Reactive Against Recombinant Protein.



Western Blot detection against Immunogen (37.99 KDa) .

Storage Buffer: 50 % glycerol

Storage Instruction: Store at -20°C or lower. Aliquot to avoid repeated freezing and thawing.

MSDS: [Download](#)

Datasheet: [Download](#)

Applications

Western Blot (Recombinant protein)

[Protocol Download](#)

ELISA

Gene Information

Entrez GeneID: [479](#)

GeneBank Accession#: [NM_001676](#)

Protein Accession#: [NP_001667](#)

Gene Name: ATP12A

Gene Alias: ATP1AL1

Gene Description: ATPase, H⁺/K⁺ transporting, nongastric, alpha polypeptide

Omim ID: [182360](#)

Gene Ontology: [Hyperlink](#)

Gene Summary: The protein encoded by this gene belongs to the family of P-type cation transport ATPases. This gene encodes a catalytic subunit of the ouabain-sensitive H⁺/K⁺ -ATPase that catalyzes the hydrolysis of ATP coupled with the exchange of H(+) and K(+) ions across the plasma membrane. It is also responsible for potassium absorption in various tissues. [provided by RefSeq]

Other Designations: ATPase, Na⁺/K⁺ transporting, alpha polypeptide-like 1,ATPase, Na⁺/K⁺ transporting, alpha-1 polypeptide-like,OTTHUMP00000018132,OTTHUMP00000042326,hydrogen/potassium-exchanging ATPase 12A,non-gastric H(+)/K(+) ATPase alpha subunit,potassium-transporting ATP

Gene Pathway

[Oxidative phosphorylation](#)

Related Disease

[Tobacco Use Disorder](#)