



# SZABO SCANDIC

Part of Europa Biosite

## Produktinformation



Forschungsprodukte & Biochemikalien



Zellkultur & Verbrauchsmaterial



Diagnostik & molekulare Diagnostik



Laborgeräte & Service

Weitere Information auf den folgenden Seiten!  
See the following pages for more information!



### Lieferung & Zahlungsart

siehe unsere [Liefer- und Versandbedingungen](#)

### Zuschläge

- Mindermengenzuschlag
- Trockeneiszuschlag
- Gefahrgutzuschlag
- Expressversand

### SZABO-SCANDIC HandelsgmbH

Quellenstraße 110, A-1100 Wien

T. +43(0)1 489 3961-0

F. +43(0)1 489 3961-7

[mail@szabo-scandic.com](mailto:mail@szabo-scandic.com)

[www.szabo-scandic.com](http://www.szabo-scandic.com)

[linkedin.com/company/szaboscandic](https://www.linkedin.com/company/szaboscandic) 

## ATP1B2 monoclonal antibody (M04), clone 4E3

Catalog # : H00000482-M04

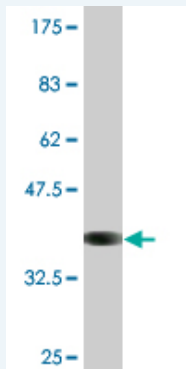
規格 : [ 100 ug ]

[List All](#)

### Specification

<b>Product Description:</b>	Mouse monoclonal antibody raised against a partial recombinant ATP1B2.
<b>Immunogen:</b>	ATP1B2 (NP_001669.3, 84 a.a. ~ 193 a.a) partial recombinant protein with GST tag. MW of the GST tag alone is 26 KDa.
<b>Sequence:</b>	IRPKTENLDVIVNVSDESWDQHVQKLNKFLPEYNDISIQAQKNDVCRPGR YYEQPDNGVLNYPKRACQFNRTQLGNCSGIGDSTHYGYSTGQPCVFIK MNRVINFYAGAN
<b>Host:</b>	Mouse
<b>Reactivity:</b>	Human
<b>Isotype:</b>	IgG2a Kappa

**Quality Control Testing:** Antibody Reactive Against Recombinant Protein.



Western Blot detection against Immunogen (37.84 KDa) .

**Storage Buffer:** In 1x PBS, pH 7.4

**Storage Instruction:** Store at -20°C or lower. Aliquot to avoid repeated freezing and thawing.

**MSDS:** [Download](#)

**Datasheet:** [Download](#)

### Applications

**Western Blot (Recombinant protein)**

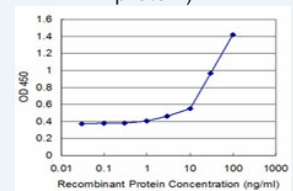
[Protocol Download](#)

**Sandwich ELISA (Recombinant protein)**

### Application Image

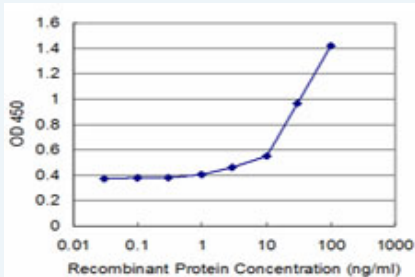
Western Blot (Recombinant protein)

Sandwich ELISA (Recombinant protein)



[enlarge](#)

ELISA



Detection limit for recombinant GST tagged ATP1B2 is approximately 3ng/ml as a capture antibody.

 [Protocol Download](#)

## ELISA

### Gene Information

Entrez GeneID: [482](#)

GeneBank [NM\\_001678](#)

Accession#:

Protein [NP\\_001669.3](#)

Accession#:

Gene Name: ATP1B2

Gene Alias: AMOG

Gene Description: ATPase, Na<sup>+</sup>/K<sup>+</sup> transporting, beta 2 polypeptide

Omim ID: [182331](#)

Gene Ontology: [Hyperlink](#)

**Gene Summary:** The protein encoded by this gene belongs to the family of Na<sup>+</sup>/K<sup>+</sup> and H<sup>+</sup>/K<sup>+</sup> ATPases beta chain proteins, and to the subfamily of Na<sup>+</sup>/K<sup>+</sup> -ATPases. Na<sup>+</sup>/K<sup>+</sup> -ATPase is an integral membrane protein responsible for establishing and maintaining the electrochemical gradients of Na and K ions across the plasma membrane. These gradients are essential for osmoregulation, for sodium-coupled transport of a variety of organic and inorganic molecules, and for electrical excitability of nerve and muscle. This enzyme is composed of two subunits, a large catalytic subunit (alpha) and a smaller glycoprotein subunit (beta). The beta subunit regulates, through assembly of alpha/beta heterodimers, the number of sodium pumps transported to the plasma membrane. The glycoprotein subunit of Na<sup>+</sup>/K<sup>+</sup> -ATPase is encoded by multiple genes. This gene encodes a beta 2 subunit. [provided by RefSeq]

**Other Designations:** Na<sup>+</sup>/K<sup>+</sup> -ATPase beta 2 subunit,Na, K-ATPase beta-2 polypeptide,adhesion molecule on glia,sodium/potassium-dependent ATPase beta-2 subunit,sodium/potassium-transporting ATPase beta-2 chain

### Gene Pathway

[Cardiac muscle contraction](#)

### Related Disease

[Breast cancer](#) [Breast Neoplasms](#) [Genetic Predisposition to Disease](#) [Graves Disease](#) [Hypokalemic Periodic Paralysis](#) [Lung Neoplasms](#) [Ovarian cancer](#) [Ovarian Neoplasms](#) [Pulmonary Disease, Chronic Obstructive](#) [Urinary Bladder Neoplasms](#) [Werner syndrome](#)

