



SZABO SCANDIC

Part of Europa Biosite

Produktinformation



Forschungsprodukte & Biochemikalien



Zellkultur & Verbrauchsmaterial



Diagnostik & molekulare Diagnostik



Laborgeräte & Service

Weitere Information auf den folgenden Seiten!
See the following pages for more information!



Lieferung & Zahlungsart

siehe unsere [Liefer- und Versandbedingungen](#)

Zuschläge

- Mindermengenzuschlag
- Trockeneiszuschlag
- Gefahrgutzuschlag
- Expressversand

SZABO-SCANDIC HandelsgmbH

Quellenstraße 110, A-1100 Wien

T. +43(0)1 489 3961-0

F. +43(0)1 489 3961-7

mail@szabo-scandic.com

www.szabo-scandic.com

[linkedin.com/company/szaboscandic](https://www.linkedin.com/company/szaboscandic) 

ATP1B3 purified MaxPab mouse polyclonal antibody (B01P) MaxPab®

Catalog # : H00000483-B01P

規格 : [50 ug]

[List All](#)

Specification

Product Description: Mouse polyclonal antibody raised against a full-length human ATP1B3 protein.

Immunogen: ATP1B3 (NP_001670.1, 1 a.a. ~ 279 a.a) full-length human protein.

Sequence:
 MTKNEKSLNQSLAEWKLFYINPTTGEFLGRTAKSWGLILLFYLVFYGFLLAALFSFTMWWMLQTLNDEVPKYRDQIPSPGLMVFPKPVTALEYTF SRSDPTSYAGYIEDLKKFLKPYTLEEQKNLVCPDGALFEQKGPVYVACQFPISLLQACSGMNDPDFGYSQGNPCILVKMNRIGLKPEGVPRIDCVSKNEDIPNVAVYPHNGMIDLKYFPYYGKKLHVGYLQPLVAVQVSFAPNNTGKEVTVECKIDGSANLKSQDDRDKFLGRVMFKITARA

Host: Mouse

Reactivity: Human

Quality Control Testing: Antibody reactive against mammalian transfected lysate.

Storage Buffer: In 1x PBS, pH 7.4

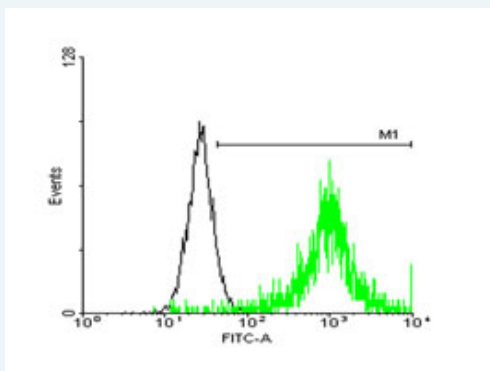
Storage Instruction: Store at -20°C or lower. Aliquot to avoid repeated freezing and thawing.

MSDS: [Download](#)

Datasheet: [Download](#)

Applications

Flow Cytometry



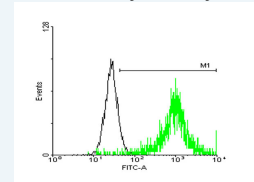
[enlarge this image](#)

FACS analysis of negative control 293 cells (Black) and ATP1B3 expressing 293 cells (Green) using ATP1B3 purified MaxPab mouse polyclonal antibody.

Western Blot (Cell lysate)

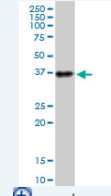
Application Image

Flow Cytometry



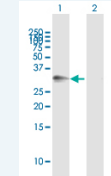
[enlarge](#)

Western Blot (Cell lysate)

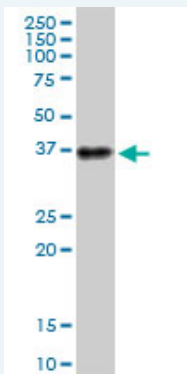


[enlarge](#)

Western Blot (Transfected lysate)



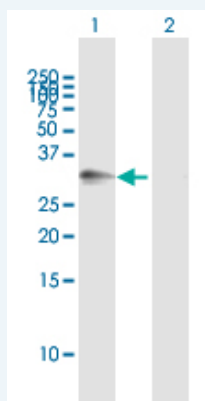
[enlarge](#)



ATP1B3 MaxPab polyclonal antibody. Western Blot analysis of ATP1B3 expression in A-431.

 [Protocol Download](#)

Western Blot (Transfected lysate)



Western Blot analysis of ATP1B3 expression in transfected 293T cell line ([H00000483-T01](#)) by ATP1B3 MaxPab polyclonal antibody.

Lane 1: ATP1B3 transfected lysate(30.69 KDa).
Lane 2: Non-transfected lysate.

 [Protocol Download](#)

Gene Information

Entrez GeneID: [483](#)

GeneBank Accession#: [NM_001679](#)

Protein Accession#: [NP_001670.1](#)

Gene Name: ATP1B3

Gene Alias: ATPB-3,CD298,FLJ29027

Gene Description: ATPase, Na⁺/K⁺ transporting, beta 3 polypeptide

Omim ID: [601867](#)

Gene Ontology: [Hyperlink](#)

Gene Summary: The protein encoded by this gene belongs to the family of Na⁺/K⁺ and H⁺/K⁺ ATPases beta chain proteins, and to the subfamily of Na⁺/K⁺ -ATPases. Na⁺/K⁺ -ATPase is an integral membrane protein responsible for establishing and maintaining the electrochemical gradients of Na and K ions across the plasma membrane. These gradients are essential for osmoregulation, for sodium-coupled transport of a variety of organic and inorganic molecules, and for electrical excitability of nerve and muscle. This enzyme is composed of two subunits, a large catalytic

subunit (alpha) and a smaller glycoprotein subunit (beta). The beta subunit regulates, through assembly of alpha/beta heterodimers, the number of sodium pumps transported to the plasma membrane. The glycoprotein subunit of Na⁺/K⁺ -ATPase is encoded by multiple genes. This gene encodes a beta 3 subunit. This gene encodes a beta 3 subunit. A pseudogene exists for this gene, and it is located on chromosome 2. [provided by RefSeq]

Other Na⁺/K⁺ -ATPase beta 3 subunit,Na, K-ATPase beta-3
Designations: polypeptide,sodium/potassium-dependent ATPase beta-3 subunit,sodium/potassium-transporting ATPase beta-3 chain

Gene Pathway

[Cardiac muscle contraction](#)

[服務條款](#) | [隱私權政策](#) | [著作及商標](#) | [網站地圖](#)

©2016 亞諾法生技股份有限公司 Abnova Corporation. 版權所有.