



SZABO SCANDIC

Part of Europa Biosite

Produktinformation



Forschungsprodukte & Biochemikalien



Zellkultur & Verbrauchsmaterial



Diagnostik & molekulare Diagnostik



Laborgeräte & Service

Weitere Information auf den folgenden Seiten!
See the following pages for more information!



Lieferung & Zahlungsart

siehe unsere [Liefer- und Versandbedingungen](#)

Zuschläge

- Mindermengenzuschlag
- Trockeneiszuschlag
- Gefahrgutzuschlag
- Expressversand

SZABO-SCANDIC HandelsgmbH

Quellenstraße 110, A-1100 Wien

T. +43(0)1 489 3961-0

F. +43(0)1 489 3961-7

mail@szabo-scandic.com

www.szabo-scandic.com

[linkedin.com/company/szaboscandic](https://www.linkedin.com/company/szaboscandic) 

FXYD2 monoclonal antibody (M01), clone 1C3-B3

Catalog # : H00000486-M01

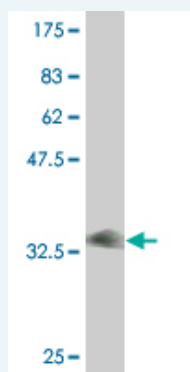
規格 : [100 ug]

[List All](#)

Specification

Product Description:	Mouse monoclonal antibody raised against a full length recombinant FXYD2.
Immunogen:	FXYD2 (AAH05302.1, 1 a.a. ~ 64 a.a) full-length recombinant protein with GST tag. MW of the GST tag alone is 26 KDa.
Sequence:	MDRWYLGGSPPKGDVDPFYDYETVRNGGLIFAGLAFIVGLLILLSRRFR CGGNKKRRQINEDEP
Host:	Mouse
Reactivity:	Human
Isotype:	IgG2b kappa

Quality Control Testing: Antibody Reactive Against Recombinant Protein.



Western Blot detection against Immunogen (32.78 KDa) .

Storage Buffer: In 1x PBS, pH 7.4

Storage Instruction: Store at -20°C or lower. Aliquot to avoid repeated freezing and thawing.

MSDS: [Download](#)

Datasheet: [Download](#)

Publication Reference

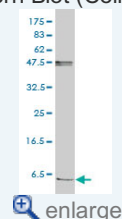
1. [A genomic-based approach identifies FXYD domain containing ion transport regulator 2 \(FXYD2\)gammaaa as a pancreatic beta cell-specific biomarker.](#) Flamez D, Roland I, Berton A, Kutlu B, Dufrane D, Beckers MC, De Waele E, Rooman I, Bouwens L, Clark A, Lonneux M, Jamar JF, Goldman S, Marechal D, Goodman N, Gianello P, Van Huffel C, Salmon I, Eizirik DL. *Diabetologia*. 2010 Apr 9. [Epub ahead of print]

Applications

Western Blot (Cell lysate)

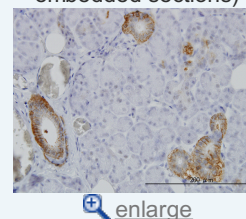
Application Image

Western Blot (Cell lysate)



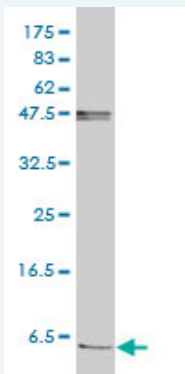
Western Blot (Recombinant protein)

Immunohistochemistry (Formalin/PFA-fixed paraffin-embedded sections)



Sandwich ELISA (Recombinant protein)

ELISA



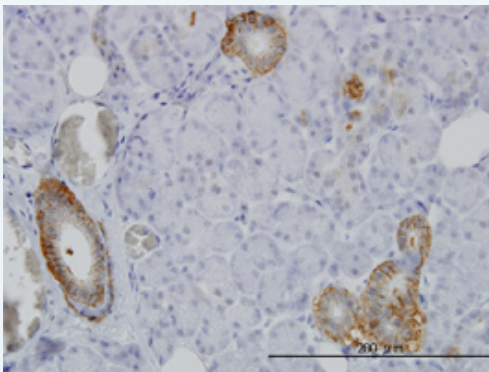
FXYD2 monoclonal antibody (M01), clone 1C3-B3 Western Blot analysis of FXYD2 expression in Jurkat (Cat # L017V1).

[Protocol Download](#)

Western Blot (Recombinant protein)

[Protocol Download](#)

Immunohistochemistry (Formalin/PFA-fixed paraffin-embedded sections)



[enlarge this image](#)

Immunoperoxidase of monoclonal antibody to FXYD2 on formalin-fixed paraffin-embedded human salivary gland. [antibody concentration 3 ug/ml]

[Protocol Download](#)

Sandwich ELISA (Recombinant protein)

Detection limit for recombinant GST tagged FXYD2 is approximately 1ng/ml as a capture antibody.

[Protocol Download](#)

ELISA

Gene Information

Entrez GeneID: [486](#)

GeneBank [BC005302](#)
Accession#:

Protein [AAH05302.1](#)
Accession#:

Gene Name: FXYD2

Gene Alias: ATP1G1,HOMG2,MGC12372

Gene Description: FXYD domain containing ion transport regulator 2

Omim ID: [154020](#), [601814](#)

Gene Ontology: [Hyperlink](#)

Gene Summary: This gene encodes a member of a family of small membrane proteins

that share a 35-amino acid signature sequence domain, beginning with the sequence PFXVD and containing 7 invariant and 6 highly conserved amino acids. The approved human gene nomenclature for the family is FXVD-domain containing ion transport regulator. Mouse FXVD5 has been termed RIC (Related to Ion Channel). FXVD2, also known as the gamma subunit of the Na,K-ATPase, regulates the properties of that enzyme. FXVD1 (phospholemman), FXVD2 (gamma), FXVD3 (MAT-8), FXVD4 (CHIF), and FXVD5 (RIC) have been shown to induce channel activity in experimental expression systems. Transmembrane topology has been established for two family members (FXVD1 and FXVD2), with the N-terminus extracellular and the C-terminus on the cytoplasmic side of the membrane. The Type III integral membrane protein encoded by this gene is the gamma subunit of the Na,K-ATPase present on the plasma membrane. Although the Na,K-ATPase does not depend on the gamma subunit to be functional, it is thought that the gamma subunit modulates the enzyme's activity by inducing ion channel activity. Mutations in this gene have been associated with renal hypomagnesaemia. Alternatively spliced transcript variants encoding different isoforms have been found for this gene. [provided by RefSeq

Other Designations: ATPase, Na⁺/K⁺ transporting, gamma 1 polypeptide,FXVD domain-containing ion transport regulator 2,Sodium-potassium-ATPase, gamma polypeptide,hypomagnesemia 2, renal

[服務條款](#) | [隱私權政策](#) | [著作及商標](#) | [網站地圖](#)

©2016 亞諾法生技股份有限公司 Abnova Corporation. 版權所有.