



SZABO SCANDIC

Part of Europa Biosite

Produktinformation



Forschungsprodukte & Biochemikalien



Zellkultur & Verbrauchsmaterial



Diagnostik & molekulare Diagnostik



Laborgeräte & Service

Weitere Information auf den folgenden Seiten!
See the following pages for more information!



Lieferung & Zahlungsart

siehe unsere [Liefer- und Versandbedingungen](#)

Zuschläge

- Mindermengenzuschlag
- Trockeneiszuschlag
- Gefahrgutzuschlag
- Expressversand

SZABO-SCANDIC HandelsgmbH

Quellenstraße 110, A-1100 Wien

T. +43(0)1 489 3961-0

F. +43(0)1 489 3961-7

mail@szabo-scandic.com

www.szabo-scandic.com

[linkedin.com/company/szaboscandic](https://www.linkedin.com/company/szaboscandic) 

ATP2A1 polyclonal antibody (A01)

Catalog # : H00000487-A01

規格 : [50 uL]

List All

Specification

Product Description: Mouse polyclonal antibody raised against a partial recombinant ATP2A1.

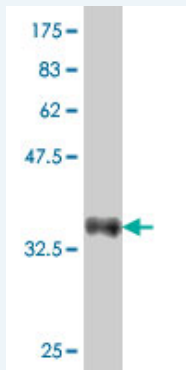
Immunogen: ATP2A1 (NP_775293, 522 a.a. ~ 612 a.a) partial recombinant protein with GST tag.

Sequence: IDRCNYVRVGTTRVPLTGPVKEKIMAVIKEWGTGRDTLRCLALATRDTPPKREEMMLDDSSARFLEYETDLTFVGVGMLDPPRKEVTGSIQ

Host: Mouse

Reactivity: Human

Quality Control Testing: Antibody Reactive Against Recombinant Protein.



Western Blot detection against Immunogen (36.12 KDa) .

Storage Buffer: 50 % glycerol

Storage Instruction: Store at -20°C or lower. Aliquot to avoid repeated freezing and thawing.

MSDS: [Download](#)

Datasheet: [Download](#)

Applications

Western Blot (Recombinant protein)

[Protocol Download](#)

ELISA

Gene Information

Entrez GeneID: [487](#)

GeneBank Accession#: [NM_173201](#)

Protein [NP_775293](#)

Accession#:

Gene Name: ATP2A1

Gene Alias: ATP2A,SERCA1

Gene Description: ATPase, Ca⁺⁺ transporting, cardiac muscle, fast twitch 1

Omim ID: [108730](#), [601003](#)

Gene Ontology: [Hyperlink](#)

Gene Summary: This gene encodes one of the SERCA Ca(2+)-ATPases, which are intracellular pumps located in the sarcoplasmic or endoplasmic reticula of muscle cells. This enzyme catalyzes the hydrolysis of ATP coupled with the translocation of calcium from the cytosol to the sarcoplasmic reticulum lumen, and is involved in muscular excitation and contraction. Mutations in this gene cause some autosomal recessive forms of Brody disease, characterized by increasing impairment of muscular relaxation during exercise. Alternative splicing results in two transcript variants encoding different isoforms. [provided by RefSeq]

Other Designations: ATPase, Ca⁺⁺ transporting, fast twitch 1,OTTHUMP00000162562,SR Ca(2+)-ATPase 1,calcium pump 1,calcium-transporting ATPase sarcoplasmic reticulum type, fast twitch skeletal muscle isoform,endoplasmic reticulum class 1/2 Ca(2+) ATPase,sarcoplasmic/endoplasm

Gene Pathway

[Alzheimer's disease Calcium signaling pathway](#)

[服務條款](#) | [隱私權政策](#) | [著作及商標](#) | [網站地圖](#)

©2016 亞諾法生技股份有限公司 Abnova Corporation. 版權所有.