



# SZABO SCANDIC

Part of Europa Biosite

## Produktinformation



Forschungsprodukte & Biochemikalien



Zellkultur & Verbrauchsmaterial



Diagnostik & molekulare Diagnostik



Laborgeräte & Service

Weitere Information auf den folgenden Seiten!  
See the following pages for more information!



### Lieferung & Zahlungsart

siehe unsere [Liefer- und Versandbedingungen](#)

### Zuschläge

- Mindermengenzuschlag
- Trockeneiszuschlag
- Gefahrgutzuschlag
- Expressversand

### SZABO-SCANDIC HandelsgmbH

Quellenstraße 110, A-1100 Wien

T. +43(0)1 489 3961-0

F. +43(0)1 489 3961-7

[mail@szabo-scandic.com](mailto:mail@szabo-scandic.com)

[www.szabo-scandic.com](http://www.szabo-scandic.com)

[linkedin.com/company/szaboscandic](https://www.linkedin.com/company/szaboscandic) 

## ATP2A1 monoclonal antibody (M03), clone 2C7

Catalog # : H00000487-M03

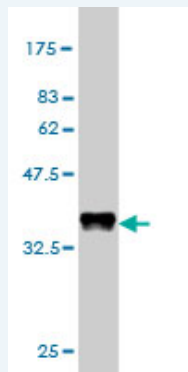
規格 : [ 100 ug ]

[List All](#)

### Specification

<b>Product Description:</b>	Mouse monoclonal antibody raised against a partial recombinant ATP2A1.
<b>Immunogen:</b>	ATP2A1 (NP_775293, 522 a.a. ~ 612 a.a) partial recombinant protein with GST tag. MW of the GST tag alone is 26 KDa.
<b>Sequence:</b>	IDRCNYVRVGTTRVPLTGPVKEKIMAVIKEWGTGRDTRLRCLALATRDTPPKREEMMLDSSARFLEYETDLTFVGVGMLDPPRKEVTGSIQ
<b>Host:</b>	Mouse
<b>Reactivity:</b>	Human
<b>Isotype:</b>	IgG1 Kappa

**Quality Control Testing:** Antibody Reactive Against Recombinant Protein.



Western Blot detection against Immunogen (35.75 KDa) .

**Storage Buffer:** In 1x PBS, pH 7.4

**Storage Instruction:** Store at -20°C or lower. Aliquot to avoid repeated freezing and thawing.

**MSDS:** [Download](#)

**Datasheet:** [Download](#)

### Applications

**Western Blot (Recombinant protein)**

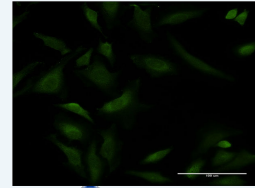
[Protocol Download](#)

**Immunofluorescence**

### Application Image

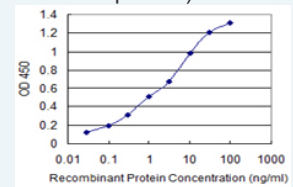
Western Blot (Recombinant protein)

Immunofluorescence



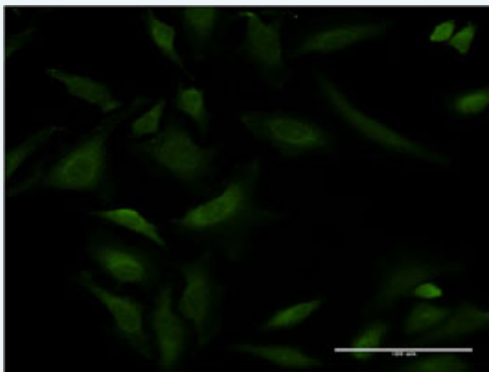
[enlarge](#)

Sandwich ELISA (Recombinant protein)



[enlarge](#)

ELISA

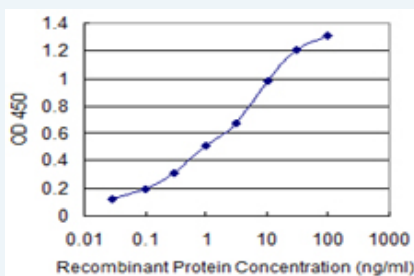


[enlarge this image](#)

Immunofluorescence of monoclonal antibody to ATP2A1 on HeLa cell . [antibody concentration 10 ug/ml]

[Protocol Download](#)

### Sandwich ELISA (Recombinant protein)



Detection limit for recombinant GST tagged ATP2A1 is 0.03 ng/ml as a capture antibody.

[Protocol Download](#)

### ELISA

### Gene Information

Entrez GeneID: [487](#)

GeneBank Accession#: [NM\\_173201](#)

Protein Accession#: [NP\\_775293](#)

Gene Name: ATP2A1

Gene Alias: ATP2A,SERCA1

Gene Description: ATPase, Ca<sup>++</sup> transporting, cardiac muscle, fast twitch 1

Omim ID: [108730](#), [601003](#)

Gene Ontology: [Hyperlink](#)

**Gene Summary:** This gene encodes one of the SERCA Ca(2+)-ATPases, which are intracellular pumps located in the sarcoplasmic or endoplasmic reticula of muscle cells. This enzyme catalyzes the hydrolysis of ATP coupled with the translocation of calcium from the cytosol to the sarcoplasmic reticulum lumen, and is involved in muscular excitation and contraction. Mutations in this gene cause some autosomal recessive forms of Brody disease, characterized by increasing impairment of muscular relaxation during exercise. Alternative splicing results in two transcript variants encoding different isoforms. [provided by RefSeq]

**Other Designations:** ATPase, Ca<sup>++</sup> transporting, fast twitch 1,OTTHUMP00000162562,SR Ca(2+)-ATPase 1,calcium pump 1,calcium-transporting ATPase sarcoplasmic reticulum type, fast twitch skeletal muscle

isoform,endoplasmic reticulum class 1/2 Ca(2+)  
ATPase,sarcoplasmic/endoplasm

---

### Gene Pathway

---

Alzheimer's disease Calcium signaling pathway

---

[服務條款](#) | [隱私權政策](#) | [著作及商標](#) | [網站地圖](#)

©2016 亞諾法生技股份有限公司 Abnova Corporation. 版權所有.