



SZABO SCANDIC

Part of Europa Biosite

Produktinformation



Forschungsprodukte & Biochemikalien



Zellkultur & Verbrauchsmaterial



Diagnostik & molekulare Diagnostik



Laborgeräte & Service

Weitere Information auf den folgenden Seiten!
See the following pages for more information!



Lieferung & Zahlungsart

siehe unsere [Liefer- und Versandbedingungen](#)

Zuschläge

- Mindermengenzuschlag
- Trockeneiszuschlag
- Gefahrgutzuschlag
- Expressversand

SZABO-SCANDIC HandelsgmbH

Quellenstraße 110, A-1100 Wien

T. +43(0)1 489 3961-0

F. +43(0)1 489 3961-7

mail@szabo-scandic.com

www.szabo-scandic.com

[linkedin.com/company/szaboscandic](https://www.linkedin.com/company/szaboscandic) 

ATP2A1 monoclonal antibody (M08), clone 5G4

Catalog # : H00000487-M08

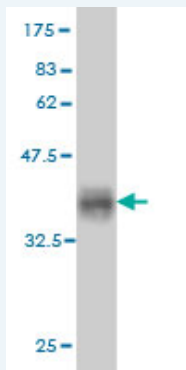
規格 : [100 ug]

[List All](#)

Specification

Product Description:	Mouse monoclonal antibody raised against a partial recombinant ATP2A1.
Immunogen:	ATP2A1 (NP_775293, 522 a.a. ~ 612 a.a) partial recombinant protein with GST tag. MW of the GST tag alone is 26 KDa.
Sequence:	IDRCNYVRVGTTRVPLTGPVKEKIMAVIKEWGTGRDTLRCLALATRDTPPKREEMMLDD SARFLEYETDLTFVGVGMLDPPRKEVTGSIQ
Host:	Mouse
Reactivity:	Human
Isotype:	IgG1 Kappa

Quality Control Testing: Antibody Reactive Against Recombinant Protein.



Western Blot detection against Immunogen (35.75 KDa) .

Storage Buffer: In 1x PBS, pH 7.4

Storage Instruction: Store at -20°C or lower. Aliquot to avoid repeated freezing and thawing.

MSDS: [Download](#)

Datasheet: [Download](#)

Applications

Western Blot (Recombinant protein)

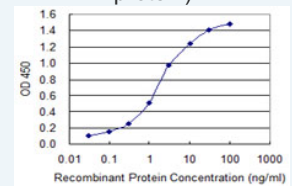
[Protocol Download](#)

Sandwich ELISA (Recombinant protein)

Application Image

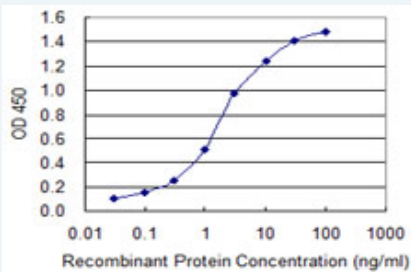
Western Blot (Recombinant protein)

Sandwich ELISA (Recombinant protein)



[enlarge](#)

ELISA



Detection limit for recombinant GST tagged ATP2A1 is 0.03 ng/ml as a capture antibody.

 [Protocol Download](#)

ELISA

Gene Information

Entrez GeneID: [487](#)

GeneBank [NM_173201](#)

Accession#:

Protein [NP_775293](#)

Accession#:

Gene Name: ATP2A1

Gene Alias: ATP2A,SERCA1

Gene Description: ATPase, Ca⁺⁺ transporting, cardiac muscle, fast twitch 1

Omim ID: [108730](#), [601003](#)

Gene Ontology: [Hyperlink](#)

Gene Summary: This gene encodes one of the SERCA Ca(2+)-ATPases, which are intracellular pumps located in the sarcoplasmic or endoplasmic reticula of muscle cells. This enzyme catalyzes the hydrolysis of ATP coupled with the translocation of calcium from the cytosol to the sarcoplasmic reticulum lumen, and is involved in muscular excitation and contraction. Mutations in this gene cause some autosomal recessive forms of Brody disease, characterized by increasing impairment of muscular relaxation during exercise. Alternative splicing results in two transcript variants encoding different isoforms. [provided by RefSeq]

Other Designations: ATPase, Ca⁺⁺ transporting, fast twitch 1,OTTHUMP00000162562,SR Ca(2+)-ATPase 1,calcium pump 1,calcium-transporting ATPase sarcoplasmic reticulum type, fast twitch skeletal muscle isoform,endoplasmic reticulum class 1/2 Ca(2+) ATPase,sarcoplasmic/endoplasm

Gene Pathway

[Alzheimer's disease Calcium signaling pathway](#)