



SZABO SCANDIC

Part of Europa Biosite

Produktinformation



Forschungsprodukte & Biochemikalien



Zellkultur & Verbrauchsmaterial



Diagnostik & molekulare Diagnostik



Laborgeräte & Service

Weitere Information auf den folgenden Seiten!
See the following pages for more information!



Lieferung & Zahlungsart

siehe unsere [Liefer- und Versandbedingungen](#)

Zuschläge

- Mindermengenzuschlag
- Trockeneiszuschlag
- Gefahrgutzuschlag
- Expressversand

SZABO-SCANDIC HandelsgmbH

Quellenstraße 110, A-1100 Wien

T. +43(0)1 489 3961-0

F. +43(0)1 489 3961-7

mail@szabo-scandic.com

www.szabo-scandic.com

[linkedin.com/company/szaboscandic](https://www.linkedin.com/company/szaboscandic) 

ATP2A3 monoclonal antibody (M01), clone 2H3

Catalog # : H00000489-M01

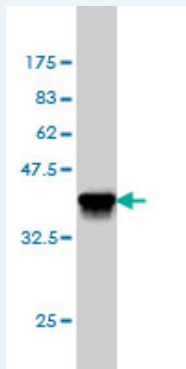
規格 : [100 ug]

[List All](#)

Specification

Product Description:	Mouse monoclonal antibody raised against a partial recombinant ATP2A3.
Immunogen:	ATP2A3 (AAH35729, 501 a.a. ~ 620 a.a) partial recombinant protein with GST tag. MW of the GST tag alone is 26 KDa.
Sequence:	TRPHPTGQGSKMFMVKGAPESVIERCSSVRVGSRTAPLTPTSREQILAKIR DWGSGSDTLRCLALATRDAPPRKEDMELDDCSKFVQYETDLTFVGCV GMLDPPRPEVAACITRCYQAGIR
Host:	Mouse
Reactivity:	Human
Isotype:	IgG2a Kappa

Quality Control Testing: Antibody Reactive Against Recombinant Protein.



Western Blot detection against Immunogen (38.94 KDa) .

Storage Buffer: In 1x PBS, pH 7.4

Storage Instruction: Store at -20°C or lower. Aliquot to avoid repeated freezing and thawing.

MSDS: [Download](#)

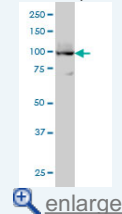
Datasheet: [Download](#)

Publication Reference

- Loss of endoplasmic reticulum calcium pump expression in choroid plexus tumours.
Ait-Ghezali L, Arabian A, Jeibmann A, Hasselblatt M, Hallaert GG, Van den Broecke C, Gray F, Brouland JP, Varin-Blank N, Papp B. *Neuropathol Appl Neurobiol.* 2014 Oct;40(6):726-35. doi: 10.1111/nan.12098.
- Modulation of endoplasmic reticulum calcium pump expression during lung cancer cell differentiation.
Arabian A, Brouland JP, Apati A, Paszty K, Hegedus L, Enyedi A, Chomienne C, Papp B. *FEBS J.* 2012 Nov 15. doi: 10.1111/febs.12064.
- Expression of Sarco/Endoplasmic Reticulum Ca²⁺ATPase (SERCA) 3 proteins in two

Application Image

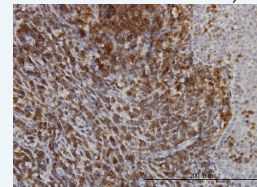
Western Blot (Cell lysate)



[enlarge](#)

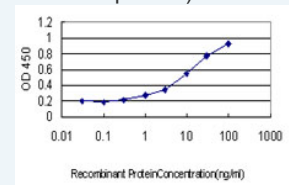
Western Blot (Recombinant protein)

Immunohistochemistry (Formalin/PFA-fixed paraffin-embedded sections)



[enlarge](#)

Sandwich ELISA (Recombinant protein)



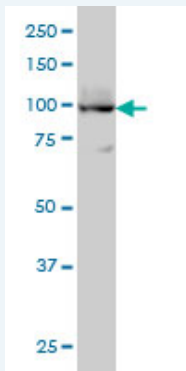
[enlarge](#)

ELISA

major conformational states in native human cell membranes.
Corvazier E, Bredoux R, Kovacs T, Enouf J. *Biochim Biophys Acta*. 2009
Mar;1788(3):587-99. Epub 2008 Dec 16.

Applications

Western Blot (Cell lysate)



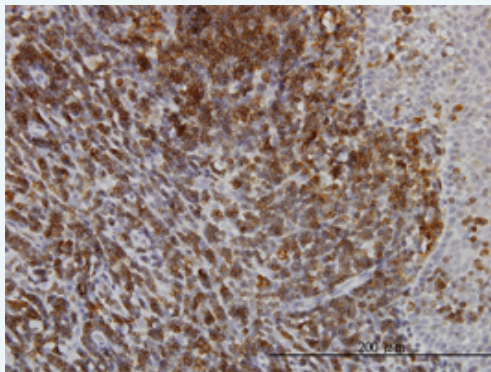
ATP2A3 monoclonal antibody (M01), clone 2H3 Western Blot analysis of ATP2A3 expression in HL-60 (Cat # L014V1).

 [Protocol Download](#)

Western Blot (Recombinant protein)


 [Protocol Download](#)

Immunohistochemistry (Formalin/PFA-fixed paraffin-embedded sections)

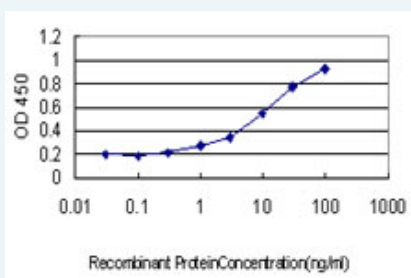


 [enlarge this image](#)

Immunoperoxidase of monoclonal antibody to ATP2A3 on formalin-fixed paraffin-embedded human tonsil. [antibody concentration 3 ug/ml]

 [Protocol Download](#)

Sandwich ELISA (Recombinant protein)



Detection limit for recombinant GST tagged ATP2A3 is approximately 0.3ng/ml as a capture antibody.

 [Protocol Download](#)

ELISA

Gene Information

Entrez GeneID: [489](#)

GeneBank [BC035729](#)

Accession#:

Protein [AAH35729](#)

Accession#:

Gene Name: ATP2A3

Gene Alias: SERCA3

Gene Description: ATPase, Ca⁺⁺ transporting, ubiquitous

Omim ID: [601929](#)

Gene Ontology: [Hyperlink](#)

Gene Summary: This gene encodes one of the SERCA Ca(2+)-ATPases, which are intracellular pumps located in the sarcoplasmic or endoplasmic reticula of muscle cells. This enzyme catalyzes the hydrolysis of ATP coupled with the translocation of calcium from the cytosol to the sarcoplasmic reticulum lumen, and is involved in calcium sequestration associated with muscular excitation and contraction. Alternative splicing results in multiple transcript variants encoding different isoforms. [provided by RefSeq]

Other Designations: ATPase, Ca(2+)-transporting, ubiquitous,SR Ca(2+)-ATPase 3,adenosine triphosphatase, calcium,calcium pump 3,calcium-translocating P-type ATPase,sarco/endoplasmic reticulum Ca2+ - ATPase,sarco/endoplasmic reticulum Ca2+ ATPase,sarcoplasmic/endoplasmic retic

Gene Pathway

[Alzheimer's disease Calcium signaling pathway](#)

Related Disease

[Colon cancer Colonic Neoplasms Genetic Predisposition to Disease Lung Neoplasms Nervous System Neoplasms](#)

[服務條款](#) | [隱私權政策](#) | [著作及商標](#) | [網站地圖](#)

©2016 亞諾法生技股份有限公司 Abnova Corporation. 版權所有.