



# SZABO SCANDIC

Part of Europa Biosite

## Produktinformation



Forschungsprodukte & Biochemikalien



Zellkultur & Verbrauchsmaterial



Diagnostik & molekulare Diagnostik



Laborgeräte & Service

Weitere Information auf den folgenden Seiten!  
See the following pages for more information!



### Lieferung & Zahlungsart

siehe unsere [Liefer- und Versandbedingungen](#)

### Zuschläge

- Mindermengenzuschlag
- Trockeneiszuschlag
- Gefahrgutzuschlag
- Expressversand

### SZABO-SCANDIC HandelsgmbH

Quellenstraße 110, A-1100 Wien

T. +43(0)1 489 3961-0

F. +43(0)1 489 3961-7

[mail@szabo-scandic.com](mailto:mail@szabo-scandic.com)

[www.szabo-scandic.com](http://www.szabo-scandic.com)

[linkedin.com/company/szaboscandic](https://www.linkedin.com/company/szaboscandic) 

**ATP2B4 purified MaxPab rabbit polyclonal antibody (D01P)** MaxPab®

Catalog # : H00000493-D01P

規格 : [ 100 ug ]

[List All](#)

**Specification**

**Product Description:** Rabbit polyclonal antibody raised against a full-length human ATP2B4 protein.

**Immunogen:** ATP2B4 (NP\_001001396.1, 1 a.a. ~ 1170 a.a) full-length human protein.

**Sequence:**  
 MTNPSDRVLPANMAESREGDFGCTVMELRKLMELRSDALQTQINVHY  
 GGVQNLCSRLKTSPEGLSGNPADLEKRRQVFGHNVIPPKPKTFLELV  
 WEALQDVTLLIIEIAIISLVLSFYRPAGEENELCGQVATTPEDENEAQAG  
 WIEGAAILFSVIMVLTAFNDWSKEKQFRGLQCRIEQKFSIIRNGQLIQ  
 LPVAEIMVGDIAQVKYGDLLPADGILIQGNDLKIDESSLTGESDHVKKSLDK  
 DPMLLSGTHVMEGSGRMVVTAVGVNSQTGIILLTLLGVNEDDEGEKKKKG  
 KKQGVPENRNKAKTQDGVALEIQPLNSQEGIDNEEKDKKAVKVPKKEKSV  
 LQGKLTRELAVQIGKAGLLMSALTVFILILYFVIDNFVINRRPWLPPECTPIYIQ  
 YFVKFFIIGITVLVAVPEGLPLAVTISLAYSVKMMKDNLLVRHLDACETM  
 GNATAICSDKTGTLTMNRMTVQAYIGGIHYRQIPSPDVFLPKVLDLVNGI  
 SINSAYTSKILPPEKEGGLPRQVGNKTECALLGFVTLKQDYQAVRNEVP  
 EEKLYKVYTFNSVRKSMSTVIRNPNGGFRMYSKGASEIILRKCNRILDRKG  
 EAVPFKKNDRDDMVRTVIEPMACDGLRTICIAYRDFDDTEPSWDNENEIL  
 TELTCAIVVGIEDPVRPEVPDAIAKCKQAGITVRMVTGDNINTARAIATKCG  
 ILTPGDDFLCLEGKEFNRLIRNEKGEVEQEKLDKIWPKLRLVARSSPTDK  
 HTLVKGIIDSTVGEHRQVAVTGDGTNDGPALKKADVGFAMGIAGTDVA  
 KEASDILTDDNFTSIVKAVMMWGRNVYDSISKFLQFQLTVNVVAVIVAFTGA  
 CITQDSPLKAVQMLWVNLIMDTFASLALATEPPTESLLKRRPYGRNKPLIS  
 RTMMKNILGHAFYQLMIFILVFAGEKFFDIDSGRKAPLHSPPSQHYTIVFN  
 TFVLMQLFNEINSRKHGKKNVFSGIYRNIFCSVVLGTFICQIFIVEFGGKP  
 FSCTSLSLSQWLWCLFIGIGELLWGQFISAIPTRSLKFLKEAGHGTTKEEI  
 TKDAEGLDEIDHAEMELRRGQILWFRGLNRIQTQIDVINTFQTGASFKGV  
 LRRQNMGQHLDVKLVPSSSYVAVAPVKSSPTTSVPAVSSPPMGNQSGQ  
 SVP

**Host:** Rabbit

**Reactivity:** Human

**Quality Control Testing:** Antibody reactive against mammalian transfected lysate.

**Storage Buffer:** In 1x PBS, pH 7.4

**Storage Instruction:** Store at -20°C or lower. Aliquot to avoid repeated freezing and thawing.

**MSDS:**  [Download](#)

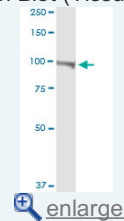
**Datasheet:**  [Download](#)

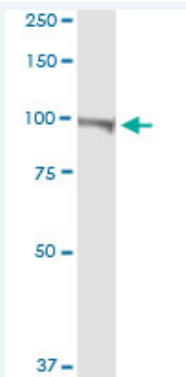
**Applications**

**Western Blot (Tissue lysate)**


**Application Image**

Western Blot (Tissue lysate)





ATP2B4 MaxPab rabbit polyclonal antibody. Western Blot analysis of ATP2B4 expression in human colon.

 [Protocol Download](#)

## Gene Information

**Entrez GeneID:** [493](#)

**GeneBank Accession#:** [NM\\_001001396](#)

**Protein Accession#:** [NP\\_001001396.1](#)

**Gene Name:** ATP2B4

**Gene Alias:** ATP2B2,DKFZp686G08106,DKFZp686M088,MXRA1,PMCA4,PMCA4b,PMCA4x

**Gene Description:** ATPase, Ca<sup>++</sup> transporting, plasma membrane 4

**Omim ID:** [108732](#)

**Gene Ontology:** [Hyperlink](#)

**Gene Summary:** The protein encoded by this gene belongs to the family of P-type primary ion transport ATPases characterized by the formation of an aspartyl phosphate intermediate during the reaction cycle. These enzymes remove bivalent calcium ions from eukaryotic cells against very large concentration gradients and play a critical role in intracellular calcium homeostasis. The mammalian plasma membrane calcium ATPase isoforms are encoded by at least four separate genes and the diversity of these enzymes is further increased by alternative splicing of transcripts. The expression of different isoforms and splice variants is regulated in a developmental, tissue- and cell type-specific manner, suggesting that these pumps are functionally adapted to the physiological needs of particular cells and tissues. This gene encodes the plasma membrane calcium ATPase isoform 4. Alternatively spliced transcript variants encoding different isoforms have been identified. [provided by RefSeq]

**Other Designations:** OTTHUMP00000034088,OTTHUMP00000034089,matrix-remodelling associated 1,plasma membrane calcium ATPase 4,plasma membrane calcium pump,sarcolemmal calcium pump

## Gene Pathway

[Calcium signaling pathway](#)

## Related Disease

[Genetic Predisposition to Disease Hypertension Tobacco Use Disorder](#)

