



# SZABO SCANDIC

Part of Europa Biosite

## Produktinformation



Forschungsprodukte & Biochemikalien



Zellkultur & Verbrauchsmaterial



Diagnostik & molekulare Diagnostik



Laborgeräte & Service

Weitere Information auf den folgenden Seiten!  
See the following pages for more information!



### Lieferung & Zahlungsart

siehe unsere [Liefer- und Versandbedingungen](#)

### Zuschläge

- Mindermengenzuschlag
- Trockeneiszuschlag
- Gefahrgutzuschlag
- Expressversand

### SZABO-SCANDIC HandelsgmbH

Quellenstraße 110, A-1100 Wien

T. +43(0)1 489 3961-0

F. +43(0)1 489 3961-7

[mail@szabo-scandic.com](mailto:mail@szabo-scandic.com)

[www.szabo-scandic.com](http://www.szabo-scandic.com)

[linkedin.com/company/szaboscandic](https://www.linkedin.com/company/szaboscandic) 

# ATP4B purified MaxPab rabbit polyclonal antibody (D01P) MaxPab®

Catalog # : H00000496-D01P

規格 : [ 100 ug ]

[List All](#)

## Specification

**Product Description:** Rabbit polyclonal antibody raised against a full-length human ATP4B protein.

**Immunogen:** ATP4B (AAH29059, 1 a.a. ~ 291 a.a) full-length human protein.

**Sequence:**  
 MAALQEKKTCGQRMEEFQRYCWNPDGQMLGRTLRSRWWWISLYYVAF  
 YVVMTGLFALCLYVLMQTVDPYTPDYQDQLRSPGVTLRPDVYGEKGLEI  
 VYNVSDNRTWADLTQTLHAFLAGYSPAAQEDSINCTSEQYFFQESFRAP  
 NHTKFSCKFTADMLQNCGLADPNFGFEEGKPCFIKMNRIKFLPSNGS  
 APRVDCAFLDQPRELGQPLQVKYPPNGTFSLHYFPYYGKKAQPHYSN  
 PLVAAKLLNIPRNAEVAIVCKVMAEHVTFNPNHDPYEGKVEFKLKIEK

**Host:** Rabbit

**Reactivity:** Human, Mouse

**Quality Control Testing:** Antibody reactive against mammalian transfected lysate.

**Storage Buffer:** In 1x PBS, pH 7.4

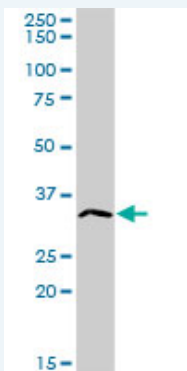
**Storage Instruction:** Store at -20°C or lower. Aliquot to avoid repeated freezing and thawing.

**MSDS:**  [Download](#)

**Datasheet:**  [Download](#)

## Applications

### Western Blot (Tissue lysate)



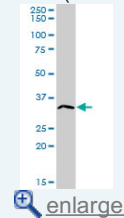
ATP4B MaxPab rabbit polyclonal antibody. Western Blot analysis of ATP4B expression in human pancreas.

 [Protocol Download](#)

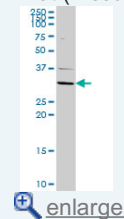
### Western Blot (Tissue lysate)

## Application Image

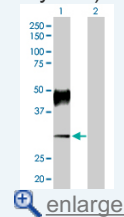
### Western Blot (Tissue lysate)

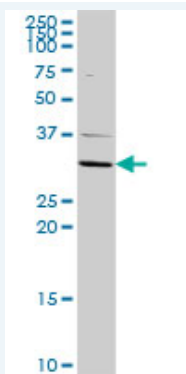


### Western Blot (Tissue lysate)




### Western Blot (Transfected lysate)

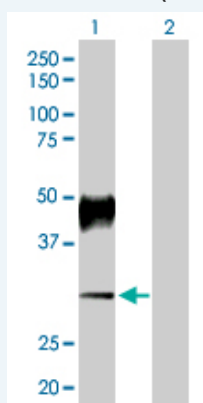




ATP4B MaxPab rabbit polyclonal antibody. Western Blot analysis of ATP4B expression in mouse liver.

 [Protocol Download](#)


#### Western Blot (Transfected lysate)



Western Blot analysis of ATP4B expression in transfected 293T cell line ([H00000496-T03](#)) by ATP4B MaxPab polyclonal antibody.

Lane 1: ATP4B transfected lysate(32.12 KDa).

Lane 2: Non-transfected lysate.

 [Protocol Download](#)

#### Gene Information

Entrez GeneID: [496](#)

GeneBank [BC029059](#)

Accession#:

Protein [AAH29059](#)

Accession#:

Gene Name: ATP4B

Gene Alias: ATP6B

Gene Description: ATPase, H<sup>+</sup>/K<sup>+</sup> exchanging, beta polypeptide

Omim ID: [137217](#)

Gene Ontology: [Hyperlink](#)

**Gene Summary:** The protein encoded by this gene belongs to a family of P-type cation-transporting ATPases. The gastric H<sup>+</sup>, K<sup>+</sup>-ATPase is a heterodimer consisting of a high molecular weight catalytic alpha subunit and a smaller but heavily glycosylated beta subunit. This enzyme is a proton pump that catalyzes the hydrolysis of ATP coupled with the exchange of H<sup>(+)</sup> and K<sup>(+)</sup> ions across the plasma membrane. It is also responsible for gastric acid secretion. This gene encodes the beta subunit of the gastric H<sup>+</sup>, K<sup>+</sup>-ATPase. [provided by RefSeq

**Other** ATPase, H<sup>+</sup>/K<sup>+</sup> transporting, beta polypeptide,gastric H<sup>+</sup>/K<sup>+</sup> ATPase  
**Designations:** beta subunit,gastric hydrogen-potassium ATPase,  
beta,hydrogen/potassium-exchanging ATPase 4B,potassium-  
transporting ATPase beta chain,proton pump beta chain

---

### Gene Pathway

[Oxidative phosphorylation](#)

---

### Related Disease

[Cardiovascular Diseases](#)

---

[服務條款](#) | [隱私權政策](#) | [著作及商標](#) | [網站地圖](#)

©2016 亞諾法生技股份有限公司 Abnova Corporation. 版權所有.