



SZABO SCANDIC

Part of Europa Biosite

Produktinformation



Forschungsprodukte & Biochemikalien



Zellkultur & Verbrauchsmaterial



Diagnostik & molekulare Diagnostik



Laborgeräte & Service

Weitere Information auf den folgenden Seiten!
See the following pages for more information!



Lieferung & Zahlungsart

siehe unsere [Liefer- und Versandbedingungen](#)

Zuschläge

- Mindermengenzuschlag
- Trockeneiszuschlag
- Gefahrgutzuschlag
- Expressversand

SZABO-SCANDIC HandelsgmbH

Quellenstraße 110, A-1100 Wien

T. +43(0)1 489 3961-0

F. +43(0)1 489 3961-7

mail@szabo-scandic.com

www.szabo-scandic.com

[linkedin.com/company/szaboscandic](https://www.linkedin.com/company/szaboscandic) 

ALDH7A1 MaxPab mouse polyclonal antibody (B01) MaxPab®

Catalog # : H00000501-B01

規格 : [50 uL]

[List All](#)

Specification

Product Description: Mouse polyclonal antibody raised against a full-length human ALDH7A1 protein.

Immunogen: ALDH7A1 (NP_001173.1, 1 a.a. ~ 511 a.a) full-length human protein.

Sequence:
 MSTLLINQPQYAWLKEGLREENEGVYNGSWGGRGEVITTYCPANNEPI
 ARVRQASVADYEETVKKAREAWKIWADIPAPKRGEIVRQIGDALREKIQVL
 GSLVLSLEMGKILVEGVGEVQEYVDICDYAVGLSRMIGGPILPSERSGHALI
 EQWNPVGLVGIIAFNFPVAVYGWNNAIAMICGNVCLWKGAPTTSLISVAV
 TKIIAKVLEDNKLPGAICSLTCGGADIGTAMAKDERVNLLSFTGSTQVGKQ
 VGLMVQERFGRSLLELGGNNAIAFEDADLSLVPSALFAAVGTAGQRC
 TTARRLFIHESIHFDEEVNRLKKAYAQIRVGNPWPDPNVLYGPLHTKQAVSM
 FLGAVEEAKKEGGTVYGGKVMDRPGNYVEPTIVTGLGHDASIAHTETF
 APILYVFKFKNEEEVFAWNNEVKQGLSSSIFTKDLGRIFRWLGPKGSDCG
 INVNIPTSGAEIGGAFGGEKHTGGGRESGSDAWKQYMRRSTCTINYSK
 DLPLAQGIKFQ

Host: Mouse

Reactivity: Human

Quality Control Testing: Antibody reactive against mammalian transfected lysate.

Storage Buffer: No additive

Storage Instruction: Store at -20°C or lower. Aliquot to avoid repeated freezing and thawing.

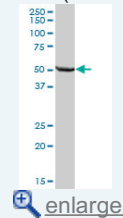
Note: For IHC and IF applications, antibody purification with Protein A will be needed prior to use.

MSDS: [Download](#)

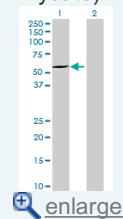
Datasheet: [Download](#)

Application Image

Western Blot (Tissue lysate)

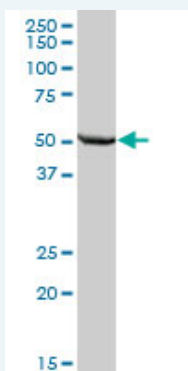


Western Blot (Transfected lysate)



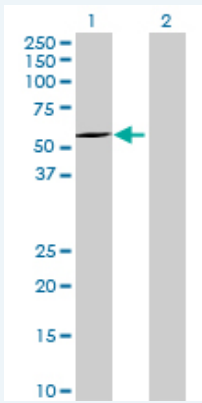
Applications

Western Blot (Tissue lysate)



ALDH7A1 MaxPab polyclonal antibody. Western Blot analysis of ALDH7A1 expression in human liver.

Western Blot (Transfected lysate)



Western Blot analysis of ALDH7A1 expression in transfected 293T cell line ([H00000501-T01](#)) by ALDH7A1 MaxPab polyclonal antibody.

Lane 1: ALDH7A1 transfected lysate(56.21 KDa).
Lane 2: Non-transfected lysate.

Gene Information

Entrez GeneID: [501](#)

GeneBank Accession#: [NM_001182.2](#)

Protein Accession#: [NP_001173.1](#)

Gene Name: ALDH7A1

Gene Alias: ATQ1,EPD,FLJ11738,FLJ92814,PDE

Gene Description: aldehyde dehydrogenase 7 family, member A1

Omim ID: [107323](#)

Gene Ontology: [Hyperlink](#)

Gene Summary: Antiquitin is a member of subfamily 7 in the aldehyde dehydrogenase gene family. These enzymes are thought to play a major role in the detoxification of aldehydes generated by alcohol metabolism and lipid peroxidation. This particular member has homology to a previously described protein from the green garden pea, the 26g pea turgor protein. Mutations in this gene cause pyridoxine-dependent epilepsy, which involves a combination of various seizure types and is responsive to immediate administration of pyridoxine hydrochloride. Four additional human antiquitin-like sequences, all of which are pseudogenes, have also been identified. [provided by RefSeq]

Other Designations: 26g turgor protein homolog,P6c dehydrogenase,alpha-AASA dehydrogenase,alpha-aminoadipic semialdehyde dehydrogenase,antiquitin 1,delta1-piperideine-6-carboxylate dehydrogenase

Gene Pathway

[3-Chloroacrylic acid degradation](#) [Arginine and proline metabolism](#)
[Ascorbate and aldarate metabolism](#) [beta-Alanine metabolism](#) [Butanoate metabolism](#)
[Fatty acid metabolism](#) [Glycerolipid metabolism](#) [Glycolysis / Gluconeogenesis](#)
[Histidine metabolism](#) [Limonene and pinene degradation](#) [Lysine degradation](#)

[Metabolic pathways](#) [Propanoate metabolism](#) [Pyruvate metabolism](#) [Tryptophan metabolism](#)
[Valine, leucine and isoleucine degradation](#)

Related Disease

[Diabetes Mellitus, Type 2](#) [Genetic Predisposition to Disease](#) [Osteoporosis](#)

[服務條款](#) | [隱私權政策](#) | [著作及商標](#) | [網站地圖](#)

©2016 亞諾法生技股份有限公司 Abnova Corporation. 版權所有.