



SZABO SCANDIC

Part of Europa Biosite

Produktinformation



Forschungsprodukte & Biochemikalien



Zellkultur & Verbrauchsmaterial



Diagnostik & molekulare Diagnostik



Laborgeräte & Service

Weitere Information auf den folgenden Seiten!
See the following pages for more information!



Lieferung & Zahlungsart

siehe unsere [Liefer- und Versandbedingungen](#)

Zuschläge

- Mindermengenzuschlag
- Trockeneiszuschlag
- Gefahrgutzuschlag
- Expressversand

SZABO-SCANDIC HandelsgmbH

Quellenstraße 110, A-1100 Wien

T. +43(0)1 489 3961-0

F. +43(0)1 489 3961-7

mail@szabo-scandic.com

www.szabo-scandic.com

[linkedin.com/company/szaboscandic](https://www.linkedin.com/company/szaboscandic) 

ALDH7A1 purified MaxPab mouse polyclonal antibody (B01P) MaxPab®

Catalog # : H00000501-B01P

規格 : [50 ug]

[List All](#)

Specification

Product Description: Mouse polyclonal antibody raised against a full-length human ALDH7A1 protein.

Immunogen: ALDH7A1 (NP_001173.1, 1 a.a. ~ 511 a.a) full-length human protein.

Sequence:
 MSTLLINQPQYAWLKEGLREENEGVYNGSWGGRGEVITTYCPANNEPI
 ARVRQASVADYEETVKKAREAWKIWADIPAPKRGEIVRQIGDALREKIQVL
 GSLVLSLEMGKILVEGVGEVQEYVDICDYAVGLSRMIGGPILPSERSGHALI
 EQWNPVGLVGIITAFNFPVAVYGWNNAIAMICGNVCLWKGAPTTSLISVAV
 TKIIAKVLEDNKLPGAICSLTCGGADIGTAMAKDERVNLLSFTGSTQVGKQ
 VGLMVQERFGRSLELGGNNAIAFEDADLSLVPSALFAAVGTAGQRC
 TTARRLFIHESIHFDEEVNRLKKAYAQIRVGNPWPDPNLYGPLHTKQAVSM
 FLGAVEEAKKEGGTVYGGKVMDRPGNYVEPTIVTGLGHDASIAHTETF
 APILYVFKFKNEEEVFAWNNEVKQGLSSSIFTKDLGRIFRWLGPKGSDCG
 IYVNIPTSGAEIGGAFGGEKHTGGGRESGSDAWKQYMRRSTCTINYSK
 DLPLAQGIKFQ

Host: Mouse

Reactivity: Human

Quality Control Testing: Antibody reactive against mammalian transfected lysate.

Storage Buffer: In 1x PBS, pH 7.4

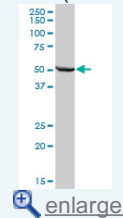
Storage Instruction: Store at -20°C or lower. Aliquot to avoid repeated freezing and thawing.

MSDS: [Download](#)

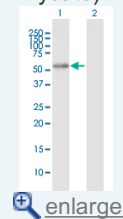
Datasheet: [Download](#)

Application Image

Western Blot (Tissue lysate)

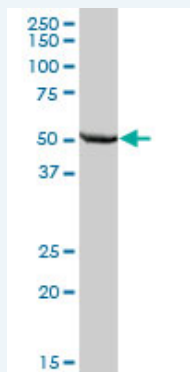


Western Blot (Transfected lysate)



Applications

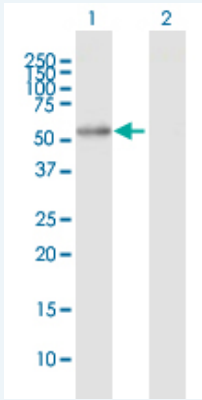
Western Blot (Tissue lysate)



ALDH7A1 MaxPab polyclonal antibody. Western Blot analysis of ALDH7A1 expression in human liver.

[Protocol Download](#)

Western Blot (Transfected lysate)



Western Blot analysis of ALDH7A1 expression in transfected 293T cell line ([H00000501-T01](#)) by ALDH7A1 MaxPab polyclonal antibody.

Lane 1: ALDH7A1 transfected lysate(56.21 kDa).

Lane 2: Non-transfected lysate.

 [Protocol Download](#)

Gene Information

Entrez GeneID: [501](#)

GeneBank [NM_001182.2](#)
Accession#:

Protein [NP_001173.1](#)
Accession#:

Gene Name: ALDH7A1

Gene Alias: ATQ1,EPD,FLJ11738,FLJ92814,PDE

Gene aldehyde dehydrogenase 7 family, member A1
Description:

Omim ID: [107323](#)

Gene Ontology: [Hyperlink](#)

Gene Summary: Antiquitin is a member of subfamily 7 in the aldehyde dehydrogenase gene family. These enzymes are thought to play a major role in the detoxification of aldehydes generated by alcohol metabolism and lipid peroxidation. This particular member has homology to a previously described protein from the green garden pea, the 26g pea turgor protein. Mutations in this gene cause pyridoxine-dependent epilepsy, which involves a combination of various seizure types and is responsive to immediate administration of pyridoxine hydrochloride. Four additional human antiquitin-like sequences, all of which are pseudogenes, have also been identified. [provided by RefSeq]

Other Designations: 26g turgor protein homolog,P6c dehydrogenase,alpha-AASA dehydrogenase,alpha-aminoadipic semialdehyde dehydrogenase,antiquitin 1,delta-1-piperideine-6-carboxylate dehydrogenase

Gene Pathway

[3-Chloroacrylic acid degradation](#) [Arginine and proline metabolism](#)
[Ascorbate and aldarate metabolism](#) [beta-Alanine metabolism](#) [Butanoate metabolism](#)
[Fatty acid metabolism](#) [Glycerolipid metabolism](#) [Glycolysis / Gluconeogenesis](#)
[Histidine metabolism](#) [Limonene and pinene degradation](#) [Lysine degradation](#)
[Metabolic pathways](#) [Propanoate metabolism](#) [Pyruvate metabolism](#) [Tryptophan metabolism](#)
[Valine, leucine and isoleucine degradation](#)

Related Disease

[Diabetes Mellitus, Type 2](#) [Genetic Predisposition to Disease](#) [Osteoporosis](#)

[服務條款](#) | [隱私權政策](#) | [著作及商標](#) | [網站地圖](#)

©2016 亞諾法生技股份有限公司 Abnova Corporation. 版權所有.