



# SZABO SCANDIC

Part of Europa Biosite

## Produktinformation



Forschungsprodukte & Biochemikalien



Zellkultur & Verbrauchsmaterial



Diagnostik & molekulare Diagnostik



Laborgeräte & Service

Weitere Information auf den folgenden Seiten!  
See the following pages for more information!



### Lieferung & Zahlungsart

siehe unsere [Liefer- und Versandbedingungen](#)

### Zuschläge

- Mindermengenzuschlag
- Trockeneiszuschlag
- Gefahrgutzuschlag
- Expressversand

### SZABO-SCANDIC HandelsgmbH

Quellenstraße 110, A-1100 Wien

T. +43(0)1 489 3961-0

F. +43(0)1 489 3961-7

[mail@szabo-scandic.com](mailto:mail@szabo-scandic.com)

[www.szabo-scandic.com](http://www.szabo-scandic.com)

[linkedin.com/company/szaboscandic](https://www.linkedin.com/company/szaboscandic) 

**ALDH7A1 purified MaxPab rabbit polyclonal antibody (D01P) MaxPab®**

Catalog # : H00000501-D01P

規格 : [ 100 ug ]

List All

**Specification**

**Product Description:** Rabbit polyclonal antibody raised against a full-length human ALDH7A1 protein.

**Immunogen:** ALDH7A1 (NP\_001173.1, 1 a.a. ~ 511 a.a) full-length human protein.

**Sequence:**  
 MSTLLINQPQYAWLKEGLREENEGVYNGSWGGRGEVITTYCPANNEPI  
 ARVRQASVADYEETVKKAREAWKIWADIPAPKRGEIVRQIGDALREKIQVL  
 GSLVLSLEMGKILVEGVGEVQEYVDICDYAVGLSRMIGGPILPSERSGHALI  
 EQWNPVGLVGIIITAFNFPVAVYGWNNAIAMICGNVCLWKGAPTTSLISVAV  
 TKIIAKVLEDNKLPGAICSLTCGGADIGTAMAKDERVNLLSFTGSTQVGKQ  
 VGLMVQERFGRSLELGGNNAIAFEDADLSLVPSALFAAVGTAGQRC  
 TTARRLFIHESIHDDEVNRLKKAYAQIRVGNPWPDPNVLYGPLHTKQAVSM  
 FLGAVEEAKKEGGTVYGGKVMDRPGNYVEPTIVTGLGHDASIAHTETF  
 APILYVFKFKNEEEVFAWNNEVKQGLSSSIFTKDLGRIFRWLGPKGSDCG  
 IYVNIPTSGAEIGGAFGGEKHTGGGRESGSDAWKQYMRRSTCTINYSK  
 DLPLAQGIKFQ

**Host:** Rabbit

**Reactivity:** Human

**Quality Control Testing:** Antibody reactive against mammalian transfected lysate.

**Storage Buffer:** In 1x PBS, pH 7.4

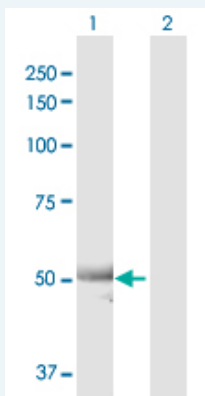
**Storage Instruction:** Store at -20°C or lower. Aliquot to avoid repeated freezing and thawing.

**MSDS:**  [Download](#)

**Datasheet:**  [Download](#)

**Applications**

**Western Blot (Transfected lysate)**

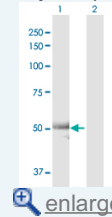


Western Blot analysis of ALDH7A1 expression in transfected 293T cell line (H00000501-T02) by ALDH7A1 MaxPab polyclonal antibody.

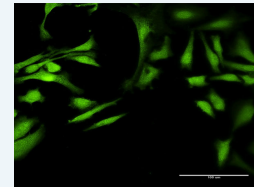
Lane 1: ALDH7A1 transfected lysate(55.40 kDa).


**Application Image**

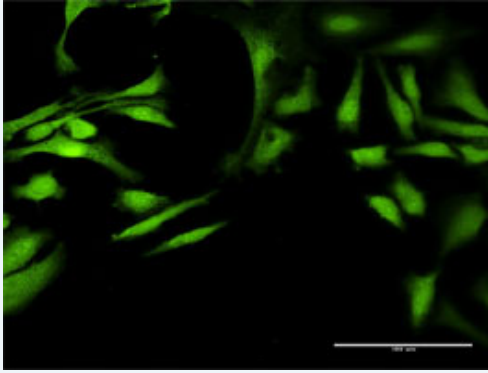
Western Blot (Transfected lysate)



Immunofluorescence



 enlarge

**Immunofluorescence**
 [enlarge this image](#)

Immunofluorescence of purified MaxPab antibody to ALDH7A1 on HeLa cell. [antibody concentration 20 ug/ml]

**Gene Information**

**Entrez GeneID:** [501](#)

**GeneBank Accession#:** [NM\\_001182.2](#)

**Protein Accession#:** [NP\\_001173.1](#)

**Gene Name:** ALDH7A1

**Gene Alias:** ATQ1,EPD,FLJ11738,FLJ92814,PDE

**Gene Description:** aldehyde dehydrogenase 7 family, member A1

**Omim ID:** [107323](#)

**Gene Ontology:** [Hyperlink](#)

**Gene Summary:** Antiquitin is a member of subfamily 7 in the aldehyde dehydrogenase gene family. These enzymes are thought to play a major role in the detoxification of aldehydes generated by alcohol metabolism and lipid peroxidation. This particular member has homology to a previously described protein from the green garden pea, the 26g pea turgor protein. Mutations in this gene cause pyridoxine-dependent epilepsy, which involves a combination of various seizure types and is responsive to immediate administration of pyridoxine hydrochloride. Four additional human antiquitin-like sequences, all of which are pseudogenes, have also been identified. [provided by RefSeq]

**Other Designations:** 26g turgor protein homolog,P6c dehydrogenase,alpha-AASA dehydrogenase,alpha-aminoadipic semialdehyde dehydrogenase,antiquitin 1,delta1-piperideine-6-carboxylate dehydrogenase

**Gene Pathway**

[3-Chloroacrylic acid degradation](#) [Arginine and proline metabolism](#)  
[Ascorbate and aldarate metabolism](#) [beta-Alanine metabolism](#) [Butanoate metabolism](#)  
[Fatty acid metabolism](#) [Glycerolipid metabolism](#) [Glycolysis / Gluconeogenesis](#)  
[Histidine metabolism](#) [Limonene and pinene degradation](#) [Lysine degradation](#)  
[Metabolic pathways](#) [Propanoate metabolism](#) [Pyruvate metabolism](#) [Tryptophan metabolism](#)  
[Valine, leucine and isoleucine degradation](#)

## Related Disease

[Diabetes Mellitus, Type 2](#) [Genetic Predisposition to Disease](#) [Osteoporosis](#)

---

[服務條款](#) | [隱私權政策](#) | [著作及商標](#) | [網站地圖](#)

©2016 亞諾法生技股份有限公司 Abnova Corporation. 版權所有.