



# SZABO SCANDIC

Part of Europa Biosite

## Produktinformation



Forschungsprodukte & Biochemikalien



Zellkultur & Verbrauchsmaterial



Diagnostik & molekulare Diagnostik



Laborgeräte & Service

Weitere Information auf den folgenden Seiten!  
See the following pages for more information!



### Lieferung & Zahlungsart

siehe unsere [Liefer- und Versandbedingungen](#)

### Zuschläge

- Mindermengenzuschlag
- Trockeneiszuschlag
- Gefahrgutzuschlag
- Expressversand

### SZABO-SCANDIC HandelsgmbH

Quellenstraße 110, A-1100 Wien

T. +43(0)1 489 3961-0

F. +43(0)1 489 3961-7

[mail@szabo-scandic.com](mailto:mail@szabo-scandic.com)

[www.szabo-scandic.com](http://www.szabo-scandic.com)

[linkedin.com/company/szaboscandic](https://www.linkedin.com/company/szaboscandic) 

## ATP5F1 MaxPab mouse polyclonal antibody (B02) MaxPab®

Catalog # : H00000515-B02

規格 : [ 50 uL ]

[List All](#)

### Specification

**Product Description:** Mouse polyclonal antibody raised against a full-length human ATP5F1 protein.

**Immunogen:** ATP5F1 (NP\_001679.2, 1 a.a. ~ 256 a.a) full-length human protein.

**Sequence:**  
 MLSRVLSAAATAAPSLKNA AFLGPGVLQATRTFHTGQPHLVPVPLPE  
 YGGKVR YGLIPEEFFQFLYPKTGVTGPYVLGTGLILYALSKEIYVISAETF  
 TALSVLGVMVYGIKKYGPVADFADKLNEQKLAQLEEKQASIQHIQNAID  
 TEKSQQALVQKRHYLFDVQRNNIAMALEVTYRERLYRVYKEVKNRLDYHI  
 SVQNMMRRRKEQEHEMINWVEKHVVQSISTQQEKETIAKCIADLKLAKKAQ  
 AQPVM

**Host:** Mouse

**Reactivity:** Human

**Quality Control Testing:** Antibody reactive against mammalian transfected lysate.

**Storage Buffer:** No additive

**Storage Instruction:** Store at -20°C or lower. Aliquot to avoid repeated freezing and thawing.

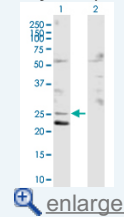
**Note:** For IHC and IF applications, antibody purification with Protein A will be needed prior to use.

**MSDS:** [Download](#)

**Datasheet:** [Download](#)

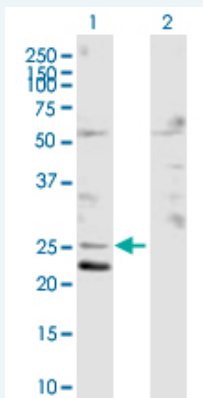
### Application Image

Western Blot (Transfected lysate)



### Applications

Western Blot (Transfected lysate)



Western Blot analysis of ATP5F1 expression in transfected 293T cell line ([H00000515-T02](#)) by ATP5F1 MaxPab polyclonal antibody.

Lane 1: ATP5F1 transfected lysate(28.16 KDa).  
 Lane 2: Non-transfected lysate.

## Gene Information

---

**Entrez GeneID:** [515](#)

**GeneBank Accession#:** [NM\\_001688.4](#)

**Protein Accession#:** [NP\\_001679.2](#)

**Gene Name:** ATP5F1

**Gene Alias:** MGC24431,PIG47

**Gene Description:** ATP synthase, H<sup>+</sup> transporting, mitochondrial F0 complex, subunit B1

**Omim ID:** [603270](#)

**Gene Ontology:** [Hyperlink](#)

**Gene Summary:** This gene encodes a subunit of mitochondrial ATP synthase. Mitochondrial ATP synthase catalyzes ATP synthesis, utilizing an electrochemical gradient of protons across the inner membrane during oxidative phosphorylation. ATP synthase is composed of two linked multi-subunit complexes: the soluble catalytic core, F1, and the membrane-spanning component, Fo, comprising the proton channel. The catalytic portion of mitochondrial ATP synthase consists of 5 different subunits (alpha, beta, gamma, delta, and epsilon) assembled with a stoichiometry of 3 alpha, 3 beta, and a single representative of the other 3. The proton channel seems to have nine subunits (a, b, c, d, e, f, g, F6 and 8). This gene encodes the b subunit of the proton channel. [provided by RefSeq]

**Other Designations:** ATP synthase B chain, mitochondrial,ATP synthase, H<sup>+</sup> transporting, mitochondrial F0 complex, subunit b, isoform 1,H<sup>+</sup>-ATP synthase subunit b,OTTHUMP00000013469,cell proliferation-inducing protein 47

## Gene Pathway

---

[Alzheimer's disease](#) [Huntington's disease](#) [Metabolic pathways](#) [Oxidative phosphorylation](#) [Parkinson's disease](#)

## Related Disease

---

[Genetic Predisposition to Disease](#) [Prostatic Neoplasms](#)