



SZABO SCANDIC

Part of Europa Biosite

Produktinformation



Forschungsprodukte & Biochemikalien



Zellkultur & Verbrauchsmaterial



Diagnostik & molekulare Diagnostik



Laborgeräte & Service

Weitere Information auf den folgenden Seiten!
See the following pages for more information!



Lieferung & Zahlungsart

siehe unsere [Liefer- und Versandbedingungen](#)

Zuschläge

- Mindermengenzuschlag
- Trockeneiszuschlag
- Gefahrgutzuschlag
- Expressversand

SZABO-SCANDIC HandelsgmbH

Quellenstraße 110, A-1100 Wien

T. +43(0)1 489 3961-0

F. +43(0)1 489 3961-7

mail@szabo-scandic.com

www.szabo-scandic.com

[linkedin.com/company/szaboscandic](https://www.linkedin.com/company/szaboscandic) 

ATP5F1 293T Cell Transient Overexpression Lysate(Denatured)

Catalog # : H00000515-T03

規格 : [100 uL]

List All

Specification

Transfected Cell Line: 293T

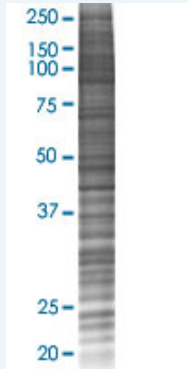
Plasmid: pCMV-ATP5F1 full-length

Host: Human

Theoretical MW (kDa): 28.27

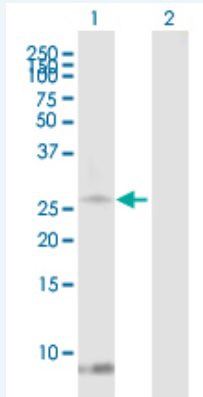
Quality Control Testing: Transient overexpression cell lysate was tested with Anti-KLRC1 antibody (H00000515-B01) by Western Blots.

SDS-PAGE Gel



ATP5F1 transfected lysate.

Western Blot



Lane 1: ATP5F1 transfected lysate (28.27 KDa)

Lane 2: Non-transfected lysate.

Storage Buffer: 1X Sample Buffer (50 mM Tris-HCl, 2% SDS, 10% glycerol, 300 mM 2-mercaptoethanol, 0.01% Bromophenol blue)

Storage Instruction: Store at -80°C. Aliquot to avoid repeated freezing and thawing.

MSDS:  [Download](#)

Applications

Western Blot

Gene Information

Entrez GeneID: [515](#)

GeneBank [BC005366.1](#)
Accession#:

Protein [AAH05366.1](#)
Accession#:

Gene Name: ATP5F1

Gene Alias: MGC24431,PIG47

Gene Description: ATP synthase, H⁺ transporting, mitochondrial F0 complex, subunit B1

Omim ID: [603270](#)

Gene Ontology: [Hyperlink](#)

Gene Summary: This gene encodes a subunit of mitochondrial ATP synthase. Mitochondrial ATP synthase catalyzes ATP synthesis, utilizing an electrochemical gradient of protons across the inner membrane during oxidative phosphorylation. ATP synthase is composed of two linked multi-subunit complexes: the soluble catalytic core, F1, and the membrane-spanning component, Fo, comprising the proton channel. The catalytic portion of mitochondrial ATP synthase consists of 5 different subunits (alpha, beta, gamma, delta, and epsilon) assembled with a stoichiometry of 3 alpha, 3 beta, and a single representative of the other 3. The proton channel seems to have nine subunits (a, b, c, d, e, f, g, F6 and 8). This gene encodes the b subunit of the proton channel. [provided by RefSeq]

Other Designations: ATP synthase B chain, mitochondrial,ATP synthase, H⁺ transporting, mitochondrial F0 complex, subunit b, isoform 1,H⁺-ATP synthase subunit b,OTTHUMP00000013469,cell proliferation-inducing protein 47

Gene Pathway

[Alzheimer's disease](#) [Huntington's disease](#) [Metabolic pathways](#) [Oxidative phosphorylation](#)
[Parkinson's disease](#)

Related Disease

[Genetic Predisposition to Disease](#) [Prostatic Neoplasms](#)