



# SZABO SCANDIC

Part of Europa Biosite

## Produktinformation



Forschungsprodukte & Biochemikalien



Zellkultur & Verbrauchsmaterial



Diagnostik & molekulare Diagnostik



Laborgeräte & Service

Weitere Information auf den folgenden Seiten!  
See the following pages for more information!



### Lieferung & Zahlungsart

siehe unsere [Liefer- und Versandbedingungen](#)

### Zuschläge

- Mindermengenzuschlag
- Trockeneiszuschlag
- Gefahrgutzuschlag
- Expressversand

### SZABO-SCANDIC HandelsgmbH

Quellenstraße 110, A-1100 Wien

T. +43(0)1 489 3961-0

F. +43(0)1 489 3961-7

[mail@szabo-scandic.com](mailto:mail@szabo-scandic.com)

[www.szabo-scandic.com](http://www.szabo-scandic.com)

[linkedin.com/company/szaboscandic](https://www.linkedin.com/company/szaboscandic) 

## ATP6V1A monoclonal antibody (M02), clone 4F5

Catalog # : H00000523-M02

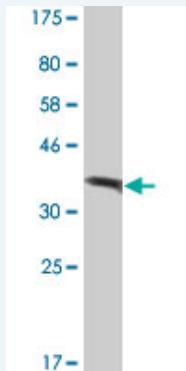
規格 : [ 100 ug ]

[List All](#)

### Specification

<b>Product Description:</b>	Mouse monoclonal antibody raised against a partial recombinant ATP6V1A.
<b>Immunogen:</b>	ATP6V1A (NP_001681, 508 a.a. ~ 617 a.a) partial recombinant protein with GST tag. MW of the GST tag alone is 26 KDa.
<b>Sequence:</b>	TLEVAKLIKDDFLQQNGYTPYDRFCPFYKTVGMLSNMIAFYDMARRAVE TTAQSDNKITWSIIREHMGDILYKLSSMKFKDPLKDGEAKIKSDYAQLLED MQNAFRSLED
<b>Host:</b>	Mouse
<b>Reactivity:</b>	Human
<b>Isotype:</b>	IgG1 Kappa

**Quality Control Testing:** Antibody Reactive Against Recombinant Protein.



Western Blot detection against Immunogen (37.84 KDa) .

**Storage Buffer:** In 1x PBS, pH 7.4

**Storage Instruction:** Store at -20°C or lower. Aliquot to avoid repeated freezing and thawing.

**MSDS:** [Download](#)

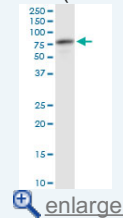
**Datasheet:** [Download](#)

### Applications

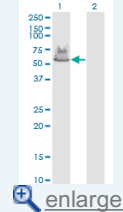
Western Blot (Tissue lysate)

### Application Image

Western Blot (Tissue lysate)

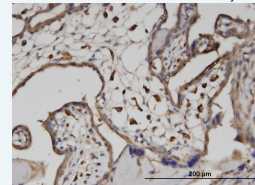


Western Blot (Transfected lysate)

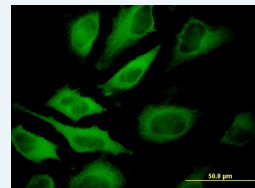


Western Blot (Recombinant protein)

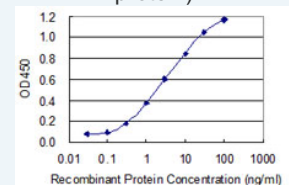
Immunohistochemistry (Formalin/PFA-fixed paraffin-embedded sections)



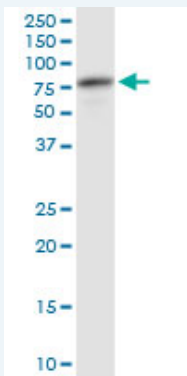
Immunofluorescence



Sandwich ELISA (Recombinant protein)



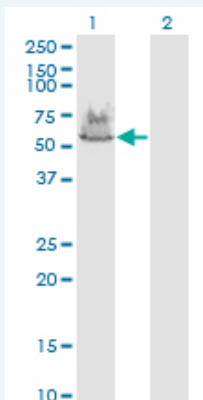
ELISA



ATP6V1A monoclonal antibody (M02), clone 4F5. Western Blot analysis of ATP6V1A expression in human kidney.

 [Protocol Download](#)

#### Western Blot (Transfected lysate)



Western Blot analysis of ATP6V1A expression in transfected 293T cell line by ATP6V1A monoclonal antibody (M02), clone 4F5.

Lane 1: ATP6V1A transfected lysate (Predicted MW: 68.3 KDa).

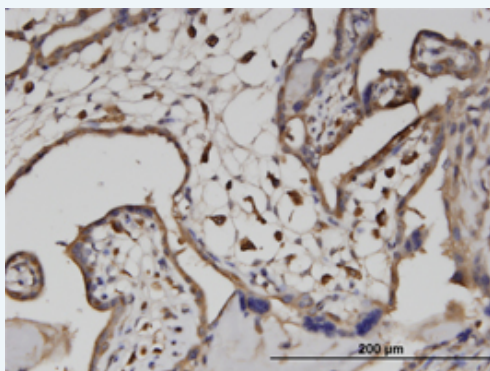
Lane 2: Non-transfected lysate.

 [Protocol Download](#)


#### Western Blot (Recombinant protein)

 [Protocol Download](#)

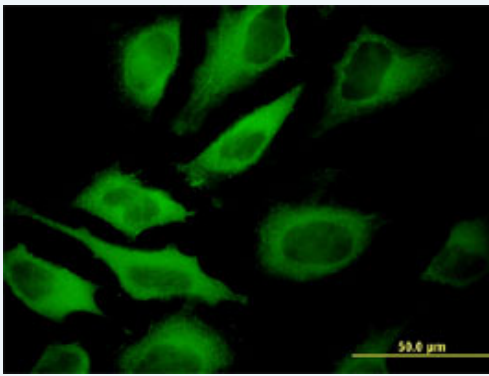
#### Immunohistochemistry (Formalin/PFA-fixed paraffin-embedded sections)



Immunoperoxidase of monoclonal antibody to ATP6V1A on formalin-fixed paraffin-embedded human placenta. [antibody concentration 3 ug/ml]

 [Protocol Download](#)

#### Immunofluorescence

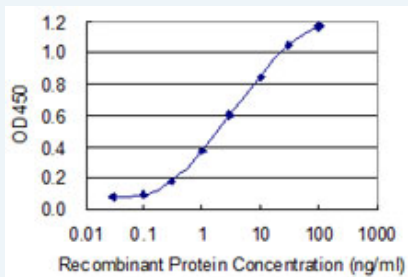


[enlarge this image](#)

Immunofluorescence of monoclonal antibody to ATP6V1A on HeLa cell . [antibody concentration 10 ug/ml]

[Protocol Download](#)

### Sandwich ELISA (Recombinant protein)



Detection limit for recombinant GST tagged ATP6V1A is 0.03 ng/ml as a capture antibody.

[Protocol Download](#)

### ELISA

### Gene Information

Entrez GeneID: [523](#)

GeneBank [NM\\_001690](#)  
Accession#:

Protein [NP\\_001681](#)  
Accession#:

Gene Name: ATP6V1A

Gene Alias: ATP6A1,ATP6V1A1,HO68,VA68,VPP2,Vma1

Gene Description: ATPase, H<sup>+</sup> transporting, lysosomal 70kDa, V1 subunit A

Omim ID: [607027](#)

Gene Ontology: [Hyperlink](#)

**Gene Summary:** This gene encodes a component of vacuolar ATPase (V-ATPase), a multisubunit enzyme that mediates acidification of eukaryotic intracellular organelles. V-ATPase dependent organelle acidification is necessary for such intracellular processes as protein sorting, zymogen activation, receptor-mediated endocytosis, and synaptic vesicle proton gradient generation. V-ATPase is composed of a cytosolic V1 domain and a transmembrane V0 domain. The V1 domain consists of three A and three B subunits, two G subunits plus the C, D, E, F, and H subunits. The V1 domain contains the ATP catalytic site. The V0 domain consists of five different subunits: a, c, c', c'', and d. Additional isoforms of many of the V1 and V0 subunit proteins are encoded by multiple genes or alternatively spliced transcript variants. This encoded protein is one of two V1 domain A subunit isoforms and is found in all tissues. Transcript variants derived from alternative polyadenylation exist.

[provided by RefSeq]

---

**Other** ATPase, H<sup>+</sup> transporting, lysosomal 70kD, V1 subunit A, isoform  
**Designations:** 1,ATPase, H<sup>+</sup> transporting, lysosomal, alpha polypeptide, 70kD, isoform  
1,ATPase, H<sup>+</sup> transporting, lysosomal, subunit A1,H(+)-transporting two-  
sector ATPase, subunit A,H<sup>+</sup>-transporting ATPase ch

---

#### Gene Pathway

---

[Epithelial cell signaling in Helicobacter pylori infection](#) [Metabolic pathways](#)  
[Oxidative phosphorylation](#) [Vibrio cholerae infection](#)

---

[服務條款](#) | [隱私權政策](#) | [著作及商標](#) | [網站地圖](#)

©2016 亞諾法生技股份有限公司 Abnova Corporation. 版權所有.