



SZABO SCANDIC

Part of Europa Biosite

Produktinformation



Forschungsprodukte & Biochemikalien



Zellkultur & Verbrauchsmaterial



Diagnostik & molekulare Diagnostik



Laborgeräte & Service

Weitere Information auf den folgenden Seiten!
See the following pages for more information!



Lieferung & Zahlungsart

siehe unsere [Liefer- und Versandbedingungen](#)

Zuschläge

- Mindermengenzuschlag
- Trockeneiszuschlag
- Gefahrgutzuschlag
- Expressversand

SZABO-SCANDIC HandelsgmbH

Quellenstraße 110, A-1100 Wien

T. +43(0)1 489 3961-0

F. +43(0)1 489 3961-7

mail@szabo-scandic.com

www.szabo-scandic.com

[linkedin.com/company/szaboscandic](https://www.linkedin.com/company/szaboscandic) 

ATP6V1B1 purified MaxPab rabbit polyclonal antibody (D01P) MaxPab®

Catalog # : H00000525-D01P

規格 : [100 ug]

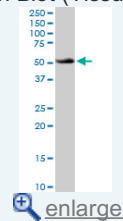
[List All](#)

Specification

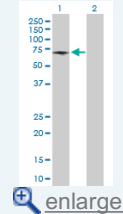
Product Description:	Rabbit polyclonal antibody raised against a full-length human ATP6V1B1 protein.
Immunogen:	ATP6V1B1 (NP_001683.2, 1 a.a. ~ 513 a.a) full-length human protein.
Sequence:	MAMEIDSRPGGLPGSSCNLGAAREHMQAVTRNYITHPRVTYRTVCSVNG PLVVLDRVKFAQYAEIVHFTLPDGTQRSGQVLEVAGTKAIVQVFEGTSGI DARKTTCEFTGDILRTPVSEDM LGRVFN GSGKPIDKGPVMAEDFLDIN GQPINPHSRIYPEEMIQTGISPIDVMNSIARGQKIPIFSAAGLPHNEIAAQICR QAGLVKSKAVLDYHDDNFAIVFAAMGVNMETARFFKSDFEQNGTMGN VCLFLNLANOPTIERIITPRALTTAEFLAYQCEKHVLVILTDMSSYAEALR EVSAAAREEVPGRRGFPGYMYTDLATYERAGRVEGRGGSITQIPILTMPN DDITHPIPDLTGFITEGQIYVDRQLHNRQIYPPINVLPSLSRLMKS AIGEM TRKDHGDVSNQLYACYAIGKDVQAMKAVVGEEALTSDDL YLEFLQKFE KNFINQGPYENRSVFESLDLGGWKLRLRIFPKEMLKRIQVAVIDEFYSREGAL QDLAPDTAL
Host:	Rabbit
Reactivity:	Human
Quality Control Testing:	Antibody reactive against mammalian transfected lysate.
Storage Buffer:	In 1x PBS, pH 7.4
Storage Instruction:	Store at -20°C or lower. Aliquot to avoid repeated freezing and thawing.
MSDS:	Download
Datasheet:	Download

Application Image

Western Blot (Tissue lysate)

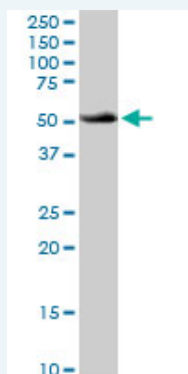


Western Blot (Transfected lysate)



Applications

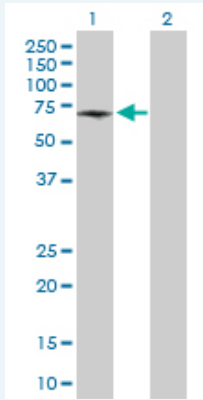
Western Blot (Tissue lysate)



ATP6V1B1 MaxPab rabbit polyclonal antibody. Western Blot analysis of ATP6V1B1 expression in human kidney.

[Protocol Download](#)

Western Blot (Transfected lysate)



Western Blot analysis of ATP6V1B1 expression in transfected 293T cell line ([H00000525-T02](#)) by ATP6V1B1 MaxPab polyclonal antibody.

Lane 1: ATP6V1B1 transfected lysate(56.80 KDa).

Lane 2: Non-transfected lysate.

 [Protocol Download](#)

Gene Information

Entrez GeneID: [525](#)

GeneBank [NM_001692.3](#)

Accession#:

Protein [NP_001683.2](#)

Accession#:

Gene Name: ATP6V1B1

Gene Alias: ATP6B1,MGC32642,RTA1B,VATB,VMA2,VPP3

Gene ATPase, H⁺ transporting, lysosomal 56/58kDa, V1 subunit B1

Description:

Omim ID: [192132](#), [267300](#)

Gene Ontology: [Hyperlink](#)

Gene Summary: This gene encodes a component of vacuolar ATPase (V-ATPase), a multisubunit enzyme that mediates acidification of eukaryotic intracellular organelles. V-ATPase dependent organelle acidification is necessary for such intracellular processes as protein sorting, zymogen activation, receptor-mediated endocytosis, and synaptic vesicle proton gradient generation. V-ATPase is composed of a cytosolic V1 domain and a transmembrane V0 domain. The V1 domain consists of three A and three B subunits, two G subunits plus the C, D, E, F, and H subunits. The V1 domain contains the ATP catalytic site. The V0 domain consists of five different subunits: a, c, c', c'', and d. Additional isoforms of many of the V1 and V0 subunit proteins are encoded by multiple genes or alternatively spliced transcript variants. This encoded protein is one of two V1 domain B subunit isoforms and is found in the kidney. Mutations in this gene cause distal renal tubular acidosis associated with sensorineural deafness. [provided by RefSeq]

Other Designations: H(+)-transporting two-sector ATPase, 58kD subunit,H+-ATPase beta 1 subunit,V-ATPase B1 subunit,endomembrane proton pump 58 kDa subunit,vacuolar proton pump 3,vacuolar proton pump, subunit 3

Gene Pathway

[Epithelial cell signaling in Helicobacter pylori infection](#) [Metabolic pathways](#)

[Oxidative phosphorylation](#) [Vibrio cholerae infection](#)

Related Disease

[Cardiovascular Diseases](#) [Diabetes Mellitus, Type 2](#) [Edema](#) [Hypertension](#)

[服務條款](#) | [隱私權政策](#) | [著作及商標](#) | [網站地圖](#)

©2016 亞諾法生技股份有限公司 Abnova Corporation. 版權所有.