



SZABO SCANDIC

Part of Europa Biosite

Produktinformation



Forschungsprodukte & Biochemikalien



Zellkultur & Verbrauchsmaterial



Diagnostik & molekulare Diagnostik



Laborgeräte & Service

Weitere Information auf den folgenden Seiten!
See the following pages for more information!



Lieferung & Zahlungsart

siehe unsere [Liefer- und Versandbedingungen](#)

Zuschläge

- Mindermengenzuschlag
- Trockeneiszuschlag
- Gefahrgutzuschlag
- Expressversand

SZABO-SCANDIC HandelsgmbH

Quellenstraße 110, A-1100 Wien

T. +43(0)1 489 3961-0

F. +43(0)1 489 3961-7

mail@szabo-scandic.com

www.szabo-scandic.com

[linkedin.com/company/szaboscandic](https://www.linkedin.com/company/szaboscandic) 

ATP6V1B2 purified MaxPab mouse polyclonal antibody (B01P) MaxPab®

Catalog # : H00000526-B01P

規格 : [50 ug]

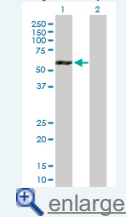
[List All](#)

Specification

Product Description:	Mouse polyclonal antibody raised against a full-length human ATP6V1B2 protein.
Immunogen:	ATP6V1B2 (AAH30640.1, 1 a.a. ~ 511 a.a) full-length human protein.
Sequence:	MALRAMRGIVNGAAPELPVPTGGPAVGAQEALAVSRNYLSQPRLTYK TVSGVNGPLVILDHVKFPRYAIVHLTLPDGTKRSGQVLEVSGSKAVVQV FEGTSGIDAKKTSCFTGDILRTPVSEDMLGRVFNKSGKPIDRGPVLAE DFLDIMGQPINPQCRIYPEEMIRTGISAIDGMNSIARGQKIPFSAAGLPHNEI AAQICRQAGLVKSKDVVDYSEENFAIVFAAMGVNMETARFFKSDFEEN GSMNDVCLFLNLANPTIERIITPRLALTTAEFLAYQCEKHVLVILTMSSY AEALREVSAAREEVPGRRGFPGYMYTDLATYERAGRVGGRNGSITQIPI LTMPNDDITHPIPDLTGYITEGQIYVDRQLHNRQIYPPINVLPSLSRLMKS AIGEGMTRKDHADVSNQLYACYAIGKDVQAMKAVVGEEALTSDDLLYLEFL QKFERNFIAQGPYENRTVFETLDIGWQLLRIFPKEMLKRIQSTLSEFYPR DSAKH
Host:	Mouse
Reactivity:	Human
Quality Control Testing:	Antibody reactive against mammalian transfected lysate.
Storage Buffer:	In 1x PBS, pH 7.4
Storage Instruction:	Store at -20°C or lower. Aliquot to avoid repeated freezing and thawing.
MSDS:	Download
Datasheet:	Download

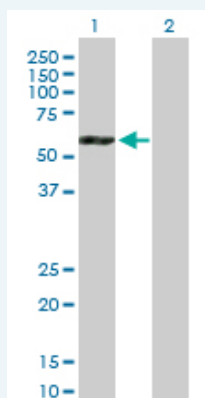
Application Image

Western Blot (Transfected lysate)



Applications

Western Blot (Transfected lysate)



Western Blot analysis of ATP6V1B2 expression in transfected 293T cell line (H00000526-T01) by ATP6V1B2 MaxPab polyclonal antibody.

Lane 1: ATP6V1B2 transfected lysate(56.40 KDa).

Gene Information

Entrez GeneID: [526](#)

GeneBank Accession#: [BC030640](#)

Protein Accession#: [AAH30640.1](#)

Gene Name: ATP6V1B2

Gene Alias: ATP6B1B2,ATP6B2,HO57,VATB,VPP3,Vma2

Gene Description: ATPase, H⁺ transporting, lysosomal 56/58kDa, V1 subunit B2

Omim ID: [606939](#)

Gene Ontology: [Hyperlink](#)

Gene Summary: This gene encodes a component of vacuolar ATPase (V-ATPase), a multisubunit enzyme that mediates acidification of eukaryotic intracellular organelles. V-ATPase dependent organelle acidification is necessary for such intracellular processes as protein sorting, zymogen activation, receptor-mediated endocytosis, and synaptic vesicle proton gradient generation. V-ATPase is composed of a cytosolic V1 domain and a transmembrane V0 domain. The V1 domain consists of three A, three B, and two G subunits, as well as a C, D, E, F, and H subunit. The V1 domain contains the ATP catalytic site. The protein encoded by this gene is one of two V1 domain B subunit isoforms and is the only B isoform highly expressed in osteoclasts. [provided by RefSeq]

Other Designations: ATPase, H⁺ transporting, lysosomal (vacuolar proton pump), beta polypeptide, 56/58kD, isoform 2,ATPase, H⁺ transporting, lysosomal 56/58kDa, V1 subunit B, isoform 2,H⁺ transporting two-sector ATPase,V-ATPase B2 subunit,endomembrane proton pump 58 kDa subu

Gene Pathway

[Epithelial cell signaling in Helicobacter pylori infection](#) [Metabolic pathways](#)
[Oxidative phosphorylation](#) [Vibrio cholerae infection](#)

Related Disease

[Tobacco Use Disorder](#)
