



SZABO SCANDIC

Part of Europa Biosite

Produktinformation



Forschungsprodukte & Biochemikalien



Zellkultur & Verbrauchsmaterial



Diagnostik & molekulare Diagnostik



Laborgeräte & Service

Weitere Information auf den folgenden Seiten!
See the following pages for more information!



Lieferung & Zahlungsart

siehe unsere [Liefer- und Versandbedingungen](#)

Zuschläge

- Mindermengenzuschlag
- Trockeneiszuschlag
- Gefahrgutzuschlag
- Expressversand

SZABO-SCANDIC HandelsgmbH

Quellenstraße 110, A-1100 Wien

T. +43(0)1 489 3961-0

F. +43(0)1 489 3961-7

mail@szabo-scandic.com

www.szabo-scandic.com

[linkedin.com/company/szaboscandic](https://www.linkedin.com/company/szaboscandic) 

ATP6V1B2 monoclonal antibody (M02), clone M1

Catalog # : H00000526-M02

規格 : [100 ug]

[List All](#)

Specification

Product Description: Mouse monoclonal antibody raised against a full length recombinant ATP6V1B2.

Immunogen: ATP6V1B2 (AAH03100, 1 a.a. ~ 511 a.a) full-length recombinant protein with GST tag. MW of the GST tag alone is 26 KDa.

Sequence: MALRAMRGIVNGAAPELPVPTGGPAVGAREQALAVSRNYLSQPRLTYKT
VSGVNGPLVILDHVKFPRYAENVHLTLPDGTKRSGQVLEVSGSKAVVQVF
EGTSGIDAKKTSCEFTGDILRTPVSEDMLGRVFNNGSGKPIDRGPVLAED
FLDIMGQPINPQCRIYPEEMIQTGISAIDGMNSIARGQKIPIFSAAGLPHNEIA
AQICRQAGLVKKSVDVYSEENFAIVFAAMGVNMETARFFKSDFEENG
SMDNVCLFLNLANPTIERIITPRLALTTAEFLAYQCEKHLVILTDMSSYA
EALREVSAAAREEVPGRRGFPGYMYTDLATYERAGRVEGRNGSITQIPIL
TMPNDDITHPIPDLTGYITEGQIYVDRQLHNRQIYPPINVLPSLSRLMKS
AIGEGMTRKDHADVSNQLYACYAIGKDVQAMKAVVGEALTSDDLYLEFLQ
KFERNFIAQGPYENRTVFETLDIGWQLLRIFPKEMLKRIQSTLSEFYPRD
SAKH

Host: Mouse

Reactivity: Human

Isotype: IgG2b Kappa

Quality Control Testing: Antibody Reactive Against Recombinant Protein.

Storage Buffer: In 1x PBS, pH 7.4

Storage Instruction: Store at -20°C or lower. Aliquot to avoid repeated freezing and thawing.

MSDS: [Download](#)

Datasheet: [Download](#)

Publication Reference

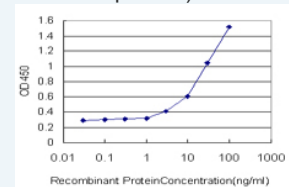
1. [The histone deacetylase inhibitor trichostatin A reduces lysosomal pH and enhances cisplatin-induced apoptosis.](#)
Eriksson I, Joosten M, Roberg K, Ollinger K. *Exp Cell Res.* 2013 Jan 1;319(1):12-20. doi: 10.1016/j.yexcr.2012.10.004. Epub 2012 Oct 12.
2. [Intrinsic differences in cisplatin sensitivity of head and neck cancer cell lines: Correlation to lysosomal pH.](#)
Nilsson C, Roberg K, Grafstrom RC, Ollinger K. *Head Neck.* 2010 Sep;32(9):1185-94.

Applications

Sandwich ELISA (Recombinant protein)

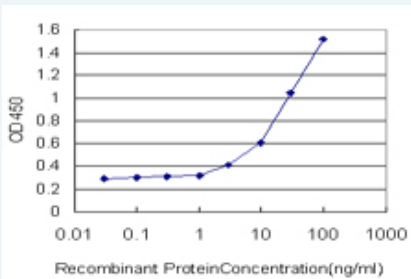
Application Image

Sandwich ELISA (Recombinant protein)



[enlarge](#)

ELISA



Detection limit for recombinant GST tagged ATP6V1B2 is approximately 0.03ng/ml as a capture antibody.

 [Protocol Download](#)

ELISA

Gene Information

Entrez GeneID: [526](#)

GeneBank [BC003100](#)

Accession#:

Protein [AAH03100](#)

Accession#:

Gene Name: ATP6V1B2

Gene Alias: ATP6B1B2,ATP6B2,HO57,VATB,VPP3,Vma2

Gene Description: ATPase, H⁺ transporting, lysosomal 56/58kDa, V1 subunit B2

Omim ID: [606939](#)

Gene Ontology: [Hyperlink](#)

Gene Summary: This gene encodes a component of vacuolar ATPase (V-ATPase), a multisubunit enzyme that mediates acidification of eukaryotic intracellular organelles. V-ATPase dependent organelle acidification is necessary for such intracellular processes as protein sorting, zymogen activation, receptor-mediated endocytosis, and synaptic vesicle proton gradient generation. V-ATPase is composed of a cytosolic V1 domain and a transmembrane V0 domain. The V1 domain consists of three A, three B, and two G subunits, as well as a C, D, E, F, and H subunit. The V1 domain contains the ATP catalytic site. The protein encoded by this gene is one of two V1 domain B subunit isoforms and is the only B isoform highly expressed in osteoclasts. [provided by RefSeq]

Other Designations: ATPase, H⁺ transporting, lysosomal (vacuolar proton pump), beta polypeptide, 56/58kD, isoform 2,ATPase, H⁺ transporting, lysosomal 56/58kDa, V1 subunit B, isoform 2,H⁺ transporting two-sector ATPase,V-ATPase B2 subunit,endomembrane proton pump 58 kDa subu

Gene Pathway

[Epithelial cell signaling in Helicobacter pylori infection](#) [Metabolic pathways](#)
[Oxidative phosphorylation](#) [Vibrio cholerae infection](#)

Related Disease

[Tobacco Use Disorder](#)

