



# SZABO SCANDIC

Part of Europa Biosite

## Produktinformation



Forschungsprodukte & Biochemikalien



Zellkultur & Verbrauchsmaterial



Diagnostik & molekulare Diagnostik



Laborgeräte & Service

Weitere Information auf den folgenden Seiten!  
See the following pages for more information!



### Lieferung & Zahlungsart

siehe unsere [Liefer- und Versandbedingungen](#)

### Zuschläge

- Mindermengenzuschlag
- Trockeneiszuschlag
- Gefahrgutzuschlag
- Expressversand

### SZABO-SCANDIC HandelsgmbH

Quellenstraße 110, A-1100 Wien

T. +43(0)1 489 3961-0

F. +43(0)1 489 3961-7

[mail@szabo-scandic.com](mailto:mail@szabo-scandic.com)

[www.szabo-scandic.com](http://www.szabo-scandic.com)

[linkedin.com/company/szaboscandic](https://www.linkedin.com/company/szaboscandic) 

## ATP6V1B2 monoclonal antibody (M05), clone 2A5

Catalog # : H00000526-M05

規格 : [ 100 ug ]

[List All](#)

### Specification

**Product Description:** Mouse monoclonal antibody raised against a full-length recombinant ATP6V1B2.

**Immunogen:** ATP6V1B2 (AAH03100, 1 a.a. ~ 511 a.a) full-length recombinant protein with GST tag. MW of the GST tag alone is 26 KDa.

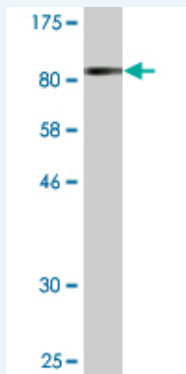
**Sequence:** MALRAMRGIVNGAAPELVPVPTGGPAVGAREQALAVSRNYLSQPRLTYKT  
VSGVNGPLVILDHVKFPRYAENVHLTLPDGTKRSGQVLEVSGSKAVVQVF  
EGTSGIDAKKTSCEFTGDILRTPVSEDMLGRVFNNGSGKPIDRGPVLAED  
FLDIMGQPINPQCRIYPEEMIQTGISAIDGMNSIARGQKIPIFSAAGLPHNEIA  
AQICRQAGLVKKSVDVYSEENFAIVFAAMGVNMETARFFKSDFEENG  
SMDNVCLFLNLANPTIERIITPRLALTTAEFLAYQCEKHLVILTDMSSYA  
EALREVSAAAREEVPGRRGFPGYMYTDLATYERAGRVEGRNGSITQIPIL  
TMPNDDITHPIPDLTGYITEGQIYVDRQLHNRQIYPPINVLPSLSRLMKS  
AIGEGMTRKDHADVSNQLYACYAIGKDVQAMKAVVGEALTSDDLLEYFLQ  
KFERNFIAQGPYENRTVFETLDIGWQLLRIFPKEMLKRIQSTLSEFYPRD  
SAKH

**Host:** Mouse

**Reactivity:** Human

**Isotype:** IgG1 Kappa

**Quality Control Testing:** Antibody Reactive Against Recombinant Protein.



Western Blot detection against Immunogen (81.95 KDa) .

**Storage Buffer:** In 1x PBS, pH 7.4

**Storage Instruction:** Store at -20°C or lower. Aliquot to avoid repeated freezing and thawing.

**MSDS:** [Download](#)

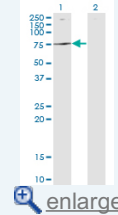
**Datasheet:** [Download](#)

### Applications

Western Blot (Transfected lysate)

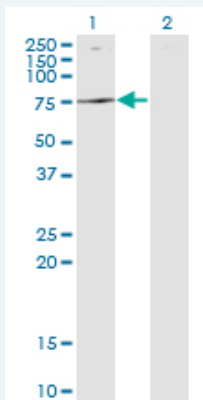
### Application Image

Western Blot (Transfected lysate)



Western Blot (Recombinant protein)

ELISA



Western Blot analysis of ATP6V1B2 expression in transfected 293T cell line by ATP6V1B2 monoclonal antibody (M05), clone 2A5.

Lane 1: ATP6V1B2 transfected lysate (Predicted MW: 56.4 KDa).  
Lane 2: Non-transfected lysate.

 [Protocol Download](#)

### Western Blot (Recombinant protein)

 [Protocol Download](#)

### ELISA

### Gene Information

**Entrez GeneID:** [526](#)

**GeneBank Accession#:** [BC003100](#)

**Protein Accession#:** [AAH03100](#)

**Gene Name:** ATP6V1B2

**Gene Alias:** ATP6B1B2,ATP6B2,HO57,VATB,VPP3,Vma2

**Gene Description:** ATPase, H<sup>+</sup> transporting, lysosomal 56/58kDa, V1 subunit B2

**Omim ID:** [606939](#)

**Gene Ontology:** [Hyperlink](#)

**Gene Summary:** This gene encodes a component of vacuolar ATPase (V-ATPase), a multisubunit enzyme that mediates acidification of eukaryotic intracellular organelles. V-ATPase dependent organelle acidification is necessary for such intracellular processes as protein sorting, zymogen activation, receptor-mediated endocytosis, and synaptic vesicle proton gradient generation. V-ATPase is composed of a cytosolic V1 domain and a transmembrane V0 domain. The V1 domain consists of three A, three B, and two G subunits, as well as a C, D, E, F, and H subunit. The V1 domain contains the ATP catalytic site. The protein encoded by this gene is one of two V1 domain B subunit isoforms and is the only B isoform highly expressed in osteoclasts. [provided by RefSeq]

**Other Designations:** ATPase, H<sup>+</sup> transporting, lysosomal (vacuolar proton pump), beta polypeptide, 56/58kD, isoform 2,ATPase, H<sup>+</sup> transporting, lysosomal 56/58kDa, V1 subunit B, isoform 2,H<sup>+</sup> transporting two-sector ATPase,V-ATPase B2 subunit,endomembrane proton pump 58 kDa subu

### Gene Pathway

[Epithelial cell signaling in Helicobacter pylori infection](#) [Metabolic pathways](#)  
[Oxidative phosphorylation](#) [Vibrio cholerae infection](#)

#### **Related Disease**

---

[Tobacco Use Disorder](#)

---

[服務條款](#) | [隱私權政策](#) | [著作及商標](#) | [網站地圖](#)

©2016 亞諾法生技股份有限公司 Abnova Corporation. 版權所有.