



SZABO SCANDIC

Part of Europa Biosite

Produktinformation



Forschungsprodukte & Biochemikalien



Zellkultur & Verbrauchsmaterial



Diagnostik & molekulare Diagnostik



Laborgeräte & Service

Weitere Information auf den folgenden Seiten!
See the following pages for more information!



Lieferung & Zahlungsart

siehe unsere [Liefer- und Versandbedingungen](#)

Zuschläge

- Mindermengenzuschlag
- Trockeneiszuschlag
- Gefahrgutzuschlag
- Expressversand

SZABO-SCANDIC HandelsgmbH

Quellenstraße 110, A-1100 Wien

T. +43(0)1 489 3961-0

F. +43(0)1 489 3961-7

mail@szabo-scandic.com

www.szabo-scandic.com

[linkedin.com/company/szaboscandic](https://www.linkedin.com/company/szaboscandic) 

ATP6V1C1 purified MaxPab rabbit polyclonal antibody (D01P) MaxPab®

Catalog # : H00000528-D01P

規格 : [100 ug]

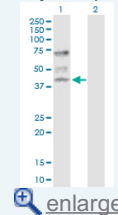
[List All](#)

Specification

Product Description:	Rabbit polyclonal antibody raised against a full-length human ATP6V1C1 protein.
Immunogen:	ATP6V1C1 (NP_001686.1, 1 a.a. ~ 382 a.a) full-length human protein.
Sequence:	MTEFWLISAPGEKTCQQTWEKLHAATSKNNNLAVTSKFNIPDLKVGTLDLVGLSDELAKLDAFVEGVVKKVAQYMADVLEDSKDKVQENLLANGVDLVTYITRFQWDMAKYPIKQSLKNISEIIAKGVTQIDNDLKSRASAYNNLKGNLQNLERKNAGSLLTRSLAEIVKDDFVLDSEYLVTLVVVPKLNHNDWIKQYETLAEMVVRSSNVLSEDQDSYLCNVTLFRKAVDDFRHKARENKFIVRDFQYNEEEMKADKEEMNRLSTDKKKQFGPLVRWLKVNFSFAFIWIHVKALRVFVESVLRVGLPVNFMAMLLQPNKKTLLKRLREVLHELKHLDSAAAILDAPMDIPGLNLSQQEYYPYVYKIDCNLLEFK
Host:	Rabbit
Reactivity:	Human
Quality Control Testing:	Antibody reactive against mammalian transfected lysate.
Storage Buffer:	In 1x PBS, pH 7.4
Storage Instruction:	Store at -20°C or lower. Aliquot to avoid repeated freezing and thawing.
MSDS:	Download
Datasheet:	Download

Application Image

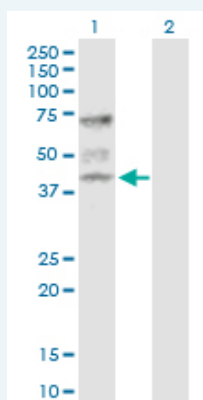
Western Blot (Transfected lysate)



[enlarge](#)

Applications

Western Blot (Transfected lysate)



Western Blot analysis of ATP6V1C1 expression in transfected 293T cell line ([H00000528-T02](#)) by ATP6V1C1 MaxPab polyclonal antibody.

Lane 1: ATP6V1C1 transfected lysate(43.90 KDa).

Lane 2: Non-transfected lysate.

[Protocol Download](#)

Gene Information

Entrez GeneID: [528](#)

**GeneBank
Accession#:** [NM_001695](#)

**Protein
Accession#:** [NP_001686.1](#)

Gene Name: ATP6V1C1

Gene Alias: ATP6C,ATP6D,FLJ20057,VATC,Vma5

**Gene
Description:** ATPase, H⁺ transporting, lysosomal 42kDa, V1 subunit C1

Omim ID: [603097](#)

Gene Ontology: [Hyperlink](#)

Gene Summary: This gene encodes a component of vacuolar ATPase (V-ATPase), a multisubunit enzyme that mediates acidification of intracellular compartments of eukaryotic cells. V-ATPase dependent acidification is necessary for such intracellular processes as protein sorting, zymogen activation, receptor-mediated endocytosis, and synaptic vesicle proton gradient generation. V-ATPase is composed of a cytosolic V1 domain and a transmembrane V0 domain. The V1 domain consists of three A and three B subunits, two G subunits plus the C, D, E, F, and H subunits. The V1 domain contains the ATP catalytic site. The V0 domain consists of five different subunits: a, c, c', c'', and d. Additional isoforms of many of the V1 and V0 subunit proteins are encoded by multiple genes or alternatively spliced transcript variants. This gene is one of two genes that encode the V1 domain C subunit proteins and is found ubiquitously. This C subunit is analogous but not homologous to gamma subunit of F-ATPases. Previously, this gene was designated ATP6D. [provided by RefSeq]

**Other
Designations:** ATPase, H⁺ transporting, lysosomal (vacuolar proton pump) 42kD,ATPase, H⁺ transporting, lysosomal 42kD, V1 subunit C, isoform 1,ATPase, H⁺ transporting, lysosomal 42kDa, V1 subunit C, isoform 1,H(+)-transporting two-sector ATPase, subunit C,H⁺ -ATPase C s

Gene Pathway

[Epithelial cell signaling in Helicobacter pylori infection](#) [Metabolic pathways](#)
[Oxidative phosphorylation](#) [Vibrio cholerae infection](#)

Related Disease

[Head and Neck Neoplasms](#) [Neoplasm Recurrence, Local](#) [Neoplasms, Second Primary](#)
[Tobacco Use Disorder](#)