



# SZABO SCANDIC

Part of Europa Biosite

## Produktinformation



Forschungsprodukte & Biochemikalien



Zellkultur & Verbrauchsmaterial



Diagnostik & molekulare Diagnostik



Laborgeräte & Service

Weitere Information auf den folgenden Seiten!  
See the following pages for more information!



### Lieferung & Zahlungsart

siehe unsere [Liefer- und Versandbedingungen](#)

### Zuschläge

- Mindermengenzuschlag
- Trockeneiszuschlag
- Gefahrgutzuschlag
- Expressversand

### SZABO-SCANDIC HandelsgmbH

Quellenstraße 110, A-1100 Wien

T. +43(0)1 489 3961-0

F. +43(0)1 489 3961-7

[mail@szabo-scandic.com](mailto:mail@szabo-scandic.com)

[www.szabo-scandic.com](http://www.szabo-scandic.com)

[linkedin.com/company/szaboscandic](https://www.linkedin.com/company/szaboscandic) 

## ATP6V1G2 monoclonal antibody (M02), clone 2E11

Catalog # : H00000534-M02

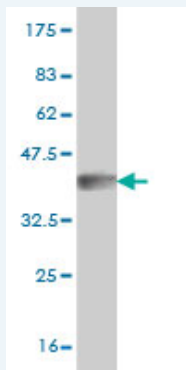
規格 : [ 100 ug ]

List All

### Specification

<b>Product Description:</b>	Mouse monoclonal antibody raised against a partial recombinant ATP6V1G2.
<b>Immunogen:</b>	ATP6V1G2 (NP_569730, 41 a.a. ~ 118 a.a) partial recombinant protein with GST tag. MW of the GST tag alone is 26 KDa.
<b>Sequence:</b>	QMEVEQYRREREHEFQSKQQAAMGSQGNLSAEVEQATRRQVQGMQS SQQRNRERVLAQLLGMVCDVRPQVHPNYRISA
<b>Host:</b>	Mouse
<b>Reactivity:</b>	Human, Mouse, Rat
<b>Isotype:</b>	IgG2b Lambda

**Quality Control Testing:** Antibody Reactive Against Recombinant Protein.



Western Blot detection against Immunogen (34.32 KDa) .

**Storage Buffer:** In 1x PBS, pH 7.4

**Storage Instruction:** Store at -20°C or lower. Aliquot to avoid repeated freezing and thawing.

**MSDS:** [Download](#)

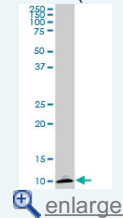
**Datasheet:** [Download](#)

### Applications

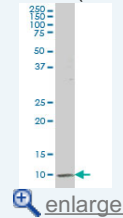
Western Blot (Cell lysate)

### Application Image

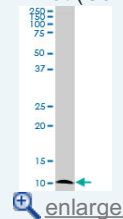
Western Blot (Cell lysate)



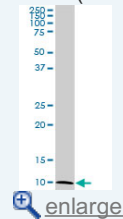
Western Blot (Cell lysate)



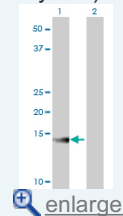
Western Blot (Cell lysate)



Western Blot (Cell lysate)

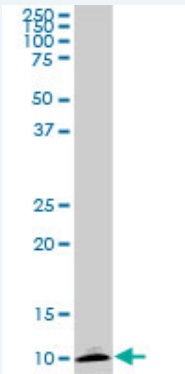


Western Blot (Transfected lysate)




Western Blot (Recombinant protein)

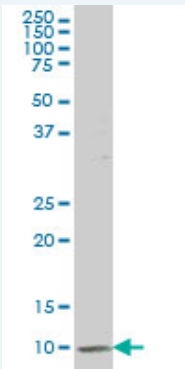
ELISA



ATP6V1G2 monoclonal antibody (M02), clone 2E11. Western Blot analysis of ATP6V1G2 expression in PC-12 ( Cat # L012V1 ).

 [Protocol Download](#)

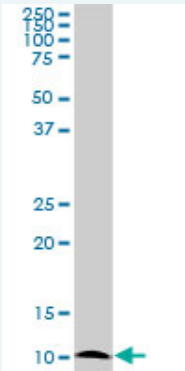
**Western Blot (Cell lysate)**




ATP6V1G2 monoclonal antibody (M02), clone 2E11 Western Blot analysis of ATP6V1G2 expression in HepG2 ( Cat # L019V1 ).

 [Protocol Download](#)

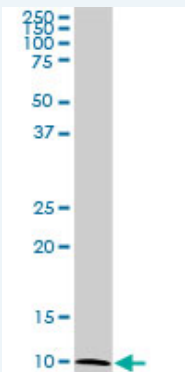
**Western Blot (Cell lysate)**



ATP6V1G2 monoclonal antibody (M02), clone 2E11. Western Blot analysis of ATP6V1G2 expression in Raw 264.7 ( Cat # L024V1 ).

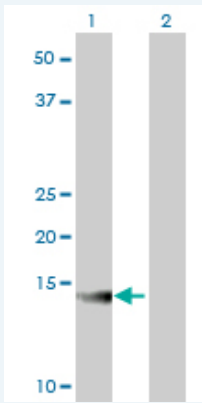
 [Protocol Download](#)

**Western Blot (Cell lysate)**



ATP6V1G2 monoclonal antibody (M02), clone 2E11. Western Blot analysis of ATP6V1G2 expression in NIH/3T3 ( Cat # L018V1 ).

### Western Blot (Transfected lysate)



Western Blot analysis of ATP6V1G2 expression in transfected 293T cell line by ATP6V1G2 monoclonal antibody (M02), clone 2E11.

Lane 1: ATP6V1G2 transfected lysate(13.6 KDa).

Lane 2: Non-transfected lysate.

### Western Blot (Recombinant protein)

### ELISA

### Gene Information

Entrez GeneID: [534](#)

GeneBank [NM\\_130463](#)  
Accession#:

Protein [NP\\_569730](#)  
Accession#:

Gene Name: ATP6V1G2

Gene Alias: ATP6G,ATP6G2,NG38,VMA10

Gene Description: ATPase, H<sup>+</sup> transporting, lysosomal 13kDa, V1 subunit G2

Omim ID: [606853](#)

Gene Ontology: [Hyperlink](#)

**Gene Summary:** This gene encodes a component of vacuolar ATPase (V-ATPase), a multisubunit enzyme that mediates acidification of intracellular compartments of eukaryotic cells. V-ATPase dependent acidification is necessary for such intracellular processes as protein sorting, zymogen activation, receptor-mediated endocytosis, and synaptic vesicle proton gradient generation. V-ATPase is composed of a cytosolic V1 domain and a transmembrane V0 domain. The V1 domain consists of three A and three B subunits, two G subunits plus the C, D, E, F, and H subunits. The V1 domain contains the ATP catalytic site. The V0 domain consists of five different subunits: a, c, c', c'', and d. Additional isoforms of many of the V1 and V0 subunit proteins are encoded by multiple genes or alternatively spliced transcript variants. This encoded protein is one of three V1 domain G subunit proteins. This gene had previous gene symbols of ATP6G and ATP6G2. Alternatively spliced transcript variants encoding different isoforms have been described. [provided by RefSeq]

**Other** ATPase, H<sup>+</sup> transporting, lysosomal (vacuolar proton pump) subunit  
**Designations:** G,ATPase, H<sup>+</sup> transporting, lysosomal, V1 subunit G2,H(+)-transporting  
two-sector ATPase, subunit  
G2,OTTHUMP00000029286,OTTHUMP00000036058,OTTHUMP00000  
036060,V-ATPase 13 kDa subunit 2,V-ATPa

---

### Gene Pathway

[Epithelial cell signaling in Helicobacter pylori infection](#) [Metabolic pathways](#)  
[Oxidative phosphorylation](#) [Vibrio cholerae infection](#)

---

### Related Disease

[Cardiovascular Diseases](#) [Diabetes Mellitus, Type 2](#) [Edema](#)  
[Genetic Predisposition to Disease](#) [Lupus Erythematosus, Systemic](#) [Malaria](#)  
[Tobacco Use Disorder](#)

---

[服務條款](#) | [隱私權政策](#) | [著作及商標](#) | [網站地圖](#)

©2016 亞諾法生技股份有限公司 Abnova Corporation. 版權所有.