



SZABO SCANDIC

Part of Europa Biosite

Produktinformation



Forschungsprodukte & Biochemikalien



Zellkultur & Verbrauchsmaterial



Diagnostik & molekulare Diagnostik



Laborgeräte & Service

Weitere Information auf den folgenden Seiten!
See the following pages for more information!



Lieferung & Zahlungsart

siehe unsere [Liefer- und Versandbedingungen](#)

Zuschläge

- Mindermengenzuschlag
- Trockeneiszuschlag
- Gefahrgutzuschlag
- Expressversand

SZABO-SCANDIC HandelsgmbH

Quellenstraße 110, A-1100 Wien

T. +43(0)1 489 3961-0

F. +43(0)1 489 3961-7

mail@szabo-scandic.com

www.szabo-scandic.com

[linkedin.com/company/szaboscandic](https://www.linkedin.com/company/szaboscandic) 

ATP6AP1 (Human) Matched Antibody Pair

Catalog # : H00000537-AP51

規格 : [1 Set]

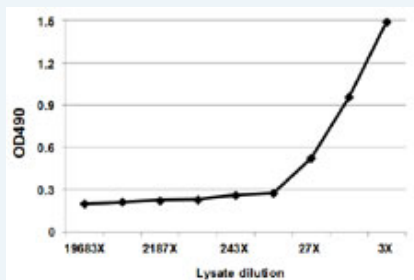
[List All](#)

Specification

Product Description: This antibody pair set comes with matched antibody pair to detect and quantify protein level of human ATP6AP1.

Reactivity: Human

Quality Control Testing: Standard curve using ATP6AP1 293T overexpression lysate (non-denatured) as an analyte.



Sandwich ELISA detection sensitivity ranging from approximately 81x to 3x dilution of the ATP6AP1 293T overexpression lysate (non-denatured).

Supplied Product: Antibody pair set content:
 1. Capture antibody: mouse monoclonal anti-ATP6AP1, IgG1 Kappa (100 ug)
 2. Detection antibody: rabbit purified polyclonal anti-ATP6AP1 (50 ug)
 *Reagents are sufficient for at least 3-5 x 96 well plates using recommended protocols.

Storage Instruction: Store reagents of the antibody pair set at -20°C or lower. Please aliquot to avoid repeated freeze thaw cycle. Reagents should be returned to -20°C storage immediately after use.

MSDS:  [Download](#)

Applications

ELISA Pair (Transfected lysate)

 [Protocol Download](#)

Gene Information

Entrez GeneID: [537](#)

Gene Name: ATP6AP1

Gene Alias: 16A,ATP6IP1,ATP6S1,Ac45,CF2,MGC129781,VATPS1,XAP-3,XAP3

Gene Description: ATPase, H⁺ transporting, lysosomal accessory protein 1

Omim ID: [300197](#)

Gene Ontology: [Hyperlink](#)

Application Image

ELISA Pair (Transfected lysate)

Gene Summary: This gene encodes a component of a multisubunit enzyme (1 mDa MW) that mediates acidification of eukaryotic intracellular organelles. Vacuolar ATPase (V-ATPase) is comprised of a cytosolic V1 (site of the ATP catalytic site) and a transmembrane V0 domain. V-ATPase dependent organelle acidification is necessary for such intracellular processes as protein sorting, zymogen activation, and receptor-mediated endocytosis. The encoded protein of this gene is approximately 45 kD and may assist in the V-ATPase-mediated acidification of neuroendocrine secretory granules. [provided by RefSeq]

Other Designations: ATPase, H⁺ transporting, lysosomal (vacuolar proton pump), subunit 1,ATPase, H⁺ transporting, lysosomal interacting protein 1,H-ATPase subunit,OTTHUMP00000032115,V-ATPase S1 accessory protein

Gene Pathway

[Epithelial cell signaling in Helicobacter pylori infection](#) [Lysosome](#) [Metabolic pathways](#)
[Oxidative phosphorylation](#) [Vibrio cholerae infection](#)

Related Disease

[Cardiovascular Diseases](#) [Diabetes Mellitus, Type 2](#) [Edema](#)

[服務條款](#) | [隱私權政策](#) | [著作及商標](#) | [網站地圖](#)

©2016 亞諾法生技股份有限公司 Abnova Corporation. 版權所有.