



# SZABO SCANDIC

Part of Europa Biosite

## Produktinformation



Forschungsprodukte & Biochemikalien



Zellkultur & Verbrauchsmaterial



Diagnostik & molekulare Diagnostik



Laborgeräte & Service

Weitere Information auf den folgenden Seiten!  
See the following pages for more information!



### Lieferung & Zahlungsart

siehe unsere [Liefer- und Versandbedingungen](#)

### Zuschläge

- Mindermengenzuschlag
- Trockeneiszuschlag
- Gefahrgutzuschlag
- Expressversand

### SZABO-SCANDIC HandelsgmbH

Quellenstraße 110, A-1100 Wien

T. +43(0)1 489 3961-0

F. +43(0)1 489 3961-7

[mail@szabo-scandic.com](mailto:mail@szabo-scandic.com)

[www.szabo-scandic.com](http://www.szabo-scandic.com)

[linkedin.com/company/szaboscandic](https://www.linkedin.com/company/szaboscandic) 

# ATP6AP1 purified MaxPab rabbit polyclonal antibody (D01P) MaxPab®

Catalog # : H00000537-D01P

規格 : [ 100 ug ]

[List All](#)

## Specification

**Product Description:** Rabbit polyclonal antibody raised against a full-length human ATP6AP1 protein.

**Immunogen:** ATP6AP1 (NP\_001174.2, 1 a.a. ~ 470 a.a) full-length human protein.

**Sequence:**  
 MMAAMATARVRMGPRCAQALWRMPWLPVFLSLAAAAAAAAAEQQVPL  
 VLWSSDRDLWAPAADTHEGHITSDLQLSTYLDPALELGPRNVLLFLQDK  
 LSIEDFTAYGGVFGNKQDSAFSNLENALDLAPSSLVLPVAVDWYAVSTLTT  
 YLQEKLGASPLHVDLTLRELKLNASLPALLLIRLPYTASSGLMAPREVL  
 GNDEVIGQVLSTLKSEDPYTAALTAVRPSRVARDVAWAGGLGRQLLQ  
 KQFVSPVIHPPVSYNDTAPRILFWAQNFVAYKDQWEDLTPLTFGVQEL  
 NLTGSFWNDSFARLSLTYERLFGTTVTFKFI LANRLYPVSARHWFTMER  
 LEVHSNGSVAYFNASQVTGPSIYFHCHEYVSSLSKKGSLLVARTQPSPW  
 QMMLQDFQIQAFNVMGEQFSYASDCASFFSPGIWMGLLTSLFMLFIFTY  
 GLHMILSLKTMDRFDDHKGPTISLTQIV

**Host:** Rabbit

**Reactivity:** Human

**Quality Control Testing:** Antibody reactive against mammalian transfected lysate.

**Storage Buffer:** In 1x PBS, pH 7.4

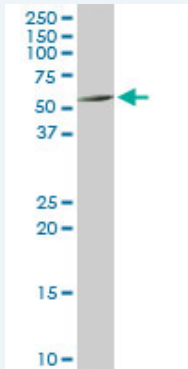
**Storage Instruction:** Store at -20°C or lower. Aliquot to avoid repeated freezing and thawing.

**MSDS:** [Download](#)

**Datasheet:** [Download](#)

## Applications

### Western Blot (Tissue lysate)



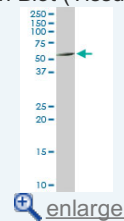
ATP6AP1 MaxPab rabbit polyclonal antibody. Western Blot analysis of ATP6AP1 expression in human kidney.

[Protocol Download](#)

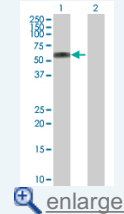
### Western Blot (Transfected lysate)

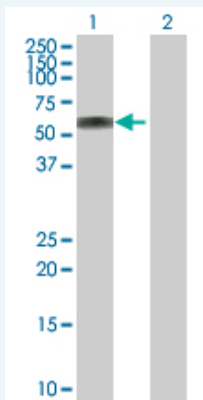
## Application Image

### Western Blot (Tissue lysate)



### Western Blot (Transfected lysate)





Western Blot analysis of ATP6AP1 expression in transfected 293T cell line ([H00000537-T01](#)) by ATP6AP1 MaxPab polyclonal antibody.

Lane 1: ATP6AP1 transfected lysate(52.00 kDa).

Lane 2: Non-transfected lysate.

 [Protocol Download](#)

## Gene Information

**Entrez GeneID:** [537](#)

**GeneBank** [NM\\_001183.4](#)

**Accession#:**

**Protein** [NP\\_001174.2](#)

**Accession#:**

**Gene Name:** ATP6AP1

**Gene Alias:** 16A,ATP6IP1,ATP6S1,Ac45,CF2,MGC129781,VATPS1,XAP-3,XAP3

**Gene** ATPase, H<sup>+</sup> transporting, lysosomal accessory protein 1

**Description:**

**Omim ID:** [300197](#)

**Gene Ontology:** [Hyperlink](#)

**Gene Summary:** This gene encodes a component of a multisubunit enzyme (1 mDa MW) that mediates acidification of eukaryotic intracellular organelles. Vacuolar ATPase (V-ATPase) is comprised of a cytosolic V1 (site of the ATP catalytic site) and a transmembrane V0 domain. V-ATPase dependent organelle acidification is necessary for such intracellular processes as protein sorting, zymogen activation, and receptor-mediated endocytosis. The encoded protein of this gene is approximately 45 kD and may assist in the V-ATPase-mediated acidification of neuroendocrine secretory granules. [provided by RefSeq]

**Other Designations:** ATPase, H<sup>+</sup> transporting, lysosomal (vacuolar proton pump), subunit 1,ATPase, H<sup>+</sup> transporting, lysosomal interacting protein 1,H-ATPase subunit,OTTHUMP00000032115,V-ATPase S1 accessory protein

## Gene Pathway

[Epithelial cell signaling in Helicobacter pylori infection](#) [Lysosome](#) [Metabolic pathways](#)  
[Oxidative phosphorylation](#) [Vibrio cholerae infection](#)

## Related Disease

[Cardiovascular Diseases](#) [Diabetes Mellitus, Type 2](#) [Edema](#)

