



SZABO SCANDIC

Part of Europa Biosite

Produktinformation



Forschungsprodukte & Biochemikalien



Zellkultur & Verbrauchsmaterial



Diagnostik & molekulare Diagnostik



Laborgeräte & Service

Weitere Information auf den folgenden Seiten!
See the following pages for more information!



Lieferung & Zahlungsart

siehe unsere [Liefer- und Versandbedingungen](#)

Zuschläge

- Mindermengenzuschlag
- Trockeneiszuschlag
- Gefahrgutzuschlag
- Expressversand

SZABO-SCANDIC HandelsgmbH

Quellenstraße 110, A-1100 Wien

T. +43(0)1 489 3961-0

F. +43(0)1 489 3961-7

mail@szabo-scandic.com

www.szabo-scandic.com

[linkedin.com/company/szaboscandic](https://www.linkedin.com/company/szaboscandic) 

ATP6AP1 monoclonal antibody (M01), clone 3A2

Catalog # : H00000537-M01

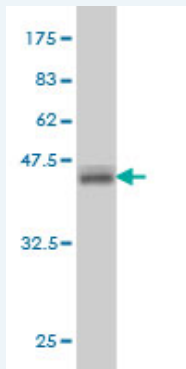
規格 : [100 ug]

List All

Specification

Product Description:	Mouse monoclonal antibody raised against a partial recombinant ATP6AP1.
Immunogen:	ATP6AP1 (NP_001174, 51 a.a. ~ 150 a.a) partial recombinant protein with GST tag. MW of the GST tag alone is 26 KDa.
Sequence:	SSDRDLWAPAADTHEGHITSDLQLSTYLDPALELGPRNVLLFLQDKLSIEDFTAYGGVFGNKQDSAFSNLENALDLAPSSLVLPVDWYAVSTLTYYLQ E
Host:	Mouse
Reactivity:	Human, Rat
Isotype:	IgG1 Kappa

Quality Control Testing: Antibody Reactive Against Recombinant Protein.



Western Blot detection against Immunogen (36.74 KDa) .

Storage Buffer: In 1x PBS, pH 7.4

Storage Instruction: Store at -20°C or lower. Aliquot to avoid repeated freezing and thawing.

MSDS: [Download](#)

Datasheet: [Download](#)

Publication Reference

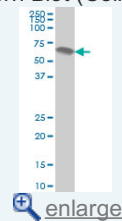
1. Vacuolar H⁺-ATPase subunit Voa1 and Voa2 cooperatively regulate secretory vesicle acidification, transmitter uptake and storage.
Saw NM, Kang SY, Parsaud L, Han GA, Jiang T, Grzegorzczuk K, Surkont M, Sun-Wada GH, Wada Y, Li L, Sugita S. Mol Biol Cell. 2011 Jul 27. [Epub ahead of print]

Applications

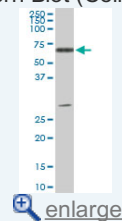
Western Blot (Cell lysate)

Application Image

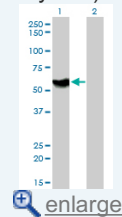
Western Blot (Cell lysate)



Western Blot (Cell lysate)

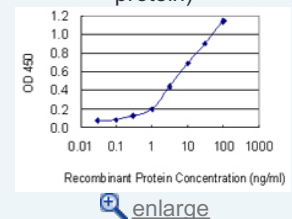


Western Blot (Transfected lysate)

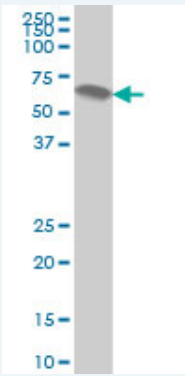


Western Blot (Recombinant protein)

Sandwich ELISA (Recombinant protein)



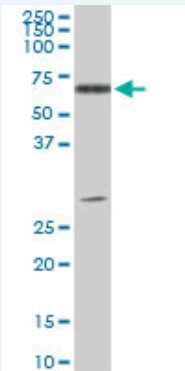
ELISA



ATP6AP1 monoclonal antibody (M01), clone 3A2 Western Blot analysis of ATP6AP1 expression in HeLa (Cat # L013V1).

 [Protocol Download](#)

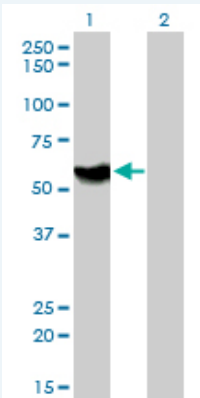
Western Blot (Cell lysate)



ATP6AP1 monoclonal antibody (M01), clone 3A2. Western Blot analysis of ATP6AP1 expression in PC-12 (Cat # L012V1).

 [Protocol Download](#)


Western Blot (Transfected lysate)



Western Blot analysis of ATP6AP1 expression in transfected 293T cell line by ATP6AP1 monoclonal antibody (M01), clone 3A2.

Lane 1: ATP6AP1 transfected lysate(52 KDa).

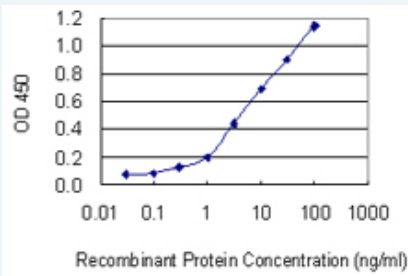
Lane 2: Non-transfected lysate.

 [Protocol Download](#)


Western Blot (Recombinant protein)

 [Protocol Download](#)

Sandwich ELISA (Recombinant protein)



Detection limit for recombinant GST tagged ATP6AP1 is 0.1 ng/ml as a capture antibody.

 [Protocol Download](#)

ELISA

Gene Information

Entrez GeneID: [537](#)

GeneBank [NM_001183](#)

Accession#:

Protein [NP_001174](#)

Accession#:

Gene Name: ATP6AP1

Gene Alias: 16A,ATP6IP1,ATP6S1,Ac45,CF2,MGC129781,VATPS1,XAP-3,XAP3

Gene Description: ATPase, H⁺ transporting, lysosomal accessory protein 1

Omim ID: [300197](#)

Gene Ontology: [Hyperlink](#)

Gene Summary: This gene encodes a component of a multisubunit enzyme (1 mDa MW) that mediates acidification of eukaryotic intracellular organelles. Vacuolar ATPase (V-ATPase) is comprised of a cytosolic V1 (site of the ATP catalytic site) and a transmembrane V0 domain. V-ATPase dependent organelle acidification is necessary for such intracellular processes as protein sorting, zymogen activation, and receptor-mediated endocytosis. The encoded protein of this gene is approximately 45 kD and may assist in the V-ATPase-mediated acidification of neuroendocrine secretory granules. [provided by RefSeq]

Other Designations: ATPase, H⁺ transporting, lysosomal (vacuolar proton pump), subunit 1,ATPase, H⁺ transporting, lysosomal interacting protein 1,H-ATPase subunit,OTTHUMP00000032115,V-ATPase S1 accessory protein

Gene Pathway

[Epithelial cell signaling in Helicobacter pylori infection](#) [Lysosome](#) [Metabolic pathways](#)
[Oxidative phosphorylation](#) [Vibrio cholerae infection](#)

Related Disease

[Cardiovascular Diseases](#) [Diabetes Mellitus, Type 2](#) [Edema](#)