



SZABO SCANDIC

Part of Europa Biosite

Produktinformation



Forschungsprodukte & Biochemikalien



Zellkultur & Verbrauchsmaterial



Diagnostik & molekulare Diagnostik



Laborgeräte & Service

Weitere Information auf den folgenden Seiten!
See the following pages for more information!



Lieferung & Zahlungsart

siehe unsere [Liefer- und Versandbedingungen](#)

Zuschläge

- Mindermengenzuschlag
- Trockeneiszuschlag
- Gefahrgutzuschlag
- Expressversand

SZABO-SCANDIC HandelsgmbH

Quellenstraße 110, A-1100 Wien

T. +43(0)1 489 3961-0

F. +43(0)1 489 3961-7

mail@szabo-scandic.com

www.szabo-scandic.com

[linkedin.com/company/szaboscandic](https://www.linkedin.com/company/szaboscandic) 

ATP7B monoclonal antibody (M01), clone 3E10

Catalog # : H00000540-M01

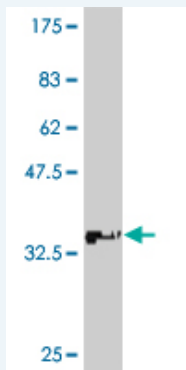
規格 : [100 ug]

[List All](#)

Specification

Product Description:	Mouse monoclonal antibody raised against a partial recombinant ATP7B.
Immunogen:	ATP7B (NP_000044, 1372 a.a. ~ 1465 a.a) partial recombinant protein with GST tag. MW of the GST tag alone is 26 KDa.
Sequence:	QLKCYKKPDLERYEAQAHGHMKPLTASQVSVHIGMDDRWRDSPRATP WDQVSYVSQVLSLSTSDKPSRHSAAADDDGDKWSLLLNGRDEEQYI
Host:	Mouse
Reactivity:	Human
Isotype:	IgG1 Kappa

Quality Control Testing: Antibody Reactive Against Recombinant Protein.



Western Blot detection against Immunogen (36.08 KDa) .

Storage Buffer: In 1x PBS, pH 7.4

Storage Instruction: Store at -20°C or lower. Aliquot to avoid repeated freezing and thawing.

MSDS: [Download](#)

Datasheet: [Download](#)

Publication Reference

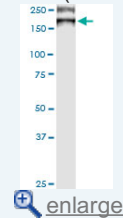
1. [Characterization of Sandwich-Cultured Hepatocytes as an In Vitro Model to Assess the Hepatobiliary Disposition of Copper.](#)
Ansele JH, Wright MR, St Claire RL, Hart RW, Gefroh HA, Brouwer KR. Drug Metab Dispos. 2009 May;37(5):969-76. Epub 2009 Feb 23.

Applications

Western Blot (Tissue lysate)

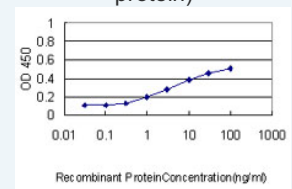
Application Image

Western Blot (Tissue lysate)



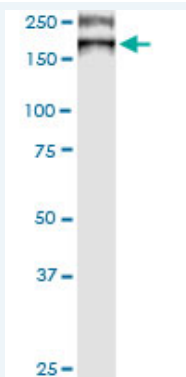
Western Blot (Recombinant protein)

Sandwich ELISA (Recombinant protein)



[enlarge](#)

ELISA



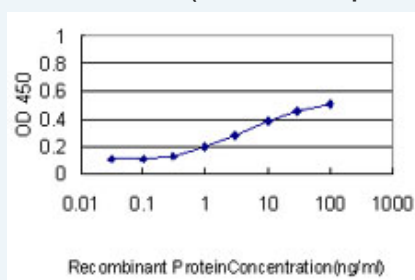
ATP7B monoclonal antibody (M01), clone 3E10. Western Blot analysis of ATP7B expression in human colon.

[Protocol Download](#)

Western Blot (Recombinant protein)

[Protocol Download](#)

Sandwich ELISA (Recombinant protein)



Detection limit for recombinant GST tagged ATP7B is approximately 0.3ng/ml as a capture antibody.

[Protocol Download](#)

ELISA

Gene Information

Entrez GeneID: [540](#)

GeneBank [NM_000053](#)

Accession#:

Protein [NP_000044](#)

Accession#:

Gene Name: ATP7B

Gene Alias: PWD,WC1,WD,WND

Gene Description: ATPase, Cu⁺⁺ transporting, beta polypeptide

Omim ID: [277900](#), [606882](#)

Gene Ontology: [Hyperlink](#)

Gene Summary: This gene is a member of the P-type cation transport ATPase family and encodes a protein with several membrane-spanning domains, an ATPase consensus sequence, a hinge domain, a phosphorylation site, and at least 2 putative copper-binding sites. This protein functions as a monomer, exporting copper out of the cells, such as the efflux of hepatic copper into the bile. Alternate transcriptional splice variants, encoding different isoforms with distinct cellular localizations, have been characterized. Mutations in this gene have been associated with Wilson disease (WD). [provided by RefSeq]

Other ATPase, Cu(2+)- transporting, beta
Designations: polypeptide, OTTHUMP00000040880, Wilson disease-associated protein, copper pump 2, copper-transporting ATPase 2

Related Disease

[Chromosome Aberrations](#) [Genetic Predisposition to Disease](#)
[Hepatolenticular Degeneration](#) [Kidney Failure](#), [Chronic Liver Failure](#), [Acute Mental Disorders](#) [Motor Skills](#) [Wilson's disease](#)

[服務條款](#) | [隱私權政策](#) | [著作及商標](#) | [網站地圖](#)

©2016 亞諾法生技股份有限公司 Abnova Corporation. 版權所有.