



# SZABO SCANDIC

Part of Europa Biosite

## Produktinformation



Forschungsprodukte & Biochemikalien



Zellkultur & Verbrauchsmaterial



Diagnostik & molekulare Diagnostik



Laborgeräte & Service

Weitere Information auf den folgenden Seiten!  
See the following pages for more information!



### Lieferung & Zahlungsart

siehe unsere [Liefer- und Versandbedingungen](#)

### Zuschläge

- Mindermengenzuschlag
- Trockeneiszuschlag
- Gefahrgutzuschlag
- Expressversand

### SZABO-SCANDIC HandelsgmbH

Quellenstraße 110, A-1100 Wien

T. +43(0)1 489 3961-0

F. +43(0)1 489 3961-7

[mail@szabo-scandic.com](mailto:mail@szabo-scandic.com)

[www.szabo-scandic.com](http://www.szabo-scandic.com)

[linkedin.com/company/szaboscandic](https://www.linkedin.com/company/szaboscandic) 

## ATP7B monoclonal antibody (M02), clone 3A12

Catalog # : H00000540-M02

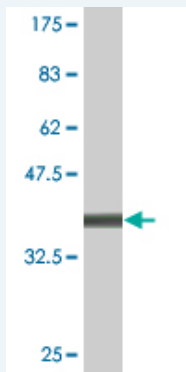
規格 : [ 100 ug ]

[List All](#)

### Specification

<b>Product Description:</b>	Mouse monoclonal antibody raised against a partial recombinant ATP7B.
<b>Immunogen:</b>	ATP7B (NP_000044, 1372 a.a. ~ 1465 a.a) partial recombinant protein with GST tag. MW of the GST tag alone is 26 KDa.
<b>Sequence:</b>	QLKCYKKPDLERYEAQAHGHMKPLTASQVSVHIGMDDRWRDSPRATP WDQVSYVSQVLSLSTSDKPSRHSAAADDDGDKWSLLLLNGRDEEQYI
<b>Host:</b>	Mouse
<b>Reactivity:</b>	Human
<b>Isotype:</b>	IgG1 Kappa

**Quality Control Testing:** Antibody Reactive Against Recombinant Protein.



Western Blot detection against Immunogen (36.08 KDa) .

**Storage Buffer:** In 1x PBS, pH 7.4

**Storage Instruction:** Store at -20°C or lower. Aliquot to avoid repeated freezing and thawing.

**MSDS:** [Download](#)

**Datasheet:** [Download](#)

### Applications

**Western Blot (Recombinant protein)**

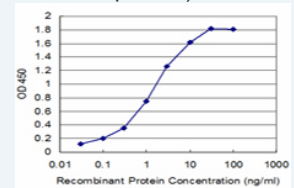
[Protocol Download](#)

**Sandwich ELISA (Recombinant protein)**

### Application Image

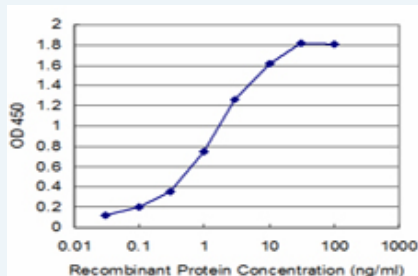
Western Blot (Recombinant protein)

Sandwich ELISA (Recombinant protein)



[enlarge](#)

ELISA



Detection limit for recombinant GST tagged ATP7B is approximately 0.03ng/ml as a capture antibody.

 [Protocol Download](#)

## ELISA

### Gene Information

Entrez GeneID: [540](#)

GeneBank [NM\\_000053](#)

Accession#:

Protein [NP\\_000044](#)

Accession#:

Gene Name: ATP7B

Gene Alias: PWD,WC1,WD,WND

Gene Description: ATPase, Cu<sup>++</sup> transporting, beta polypeptide

Omim ID: [277900](#), [606882](#)

Gene Ontology: [Hyperlink](#)

**Gene Summary:** This gene is a member of the P-type cation transport ATPase family and encodes a protein with several membrane-spanning domains, an ATPase consensus sequence, a hinge domain, a phosphorylation site, and at least 2 putative copper-binding sites. This protein functions as a monomer, exporting copper out of the cells, such as the efflux of hepatic copper into the bile. Alternate transcriptional splice variants, encoding different isoforms with distinct cellular localizations, have been characterized. Mutations in this gene have been associated with Wilson disease (WD). [provided by RefSeq]

**Other Designations:** ATPase, Cu(2+)- transporting, beta polypeptide, OTTHUMP00000040880, Wilson disease-associated protein, copper pump 2, copper-transporting ATPase 2

### Related Disease

[Chromosome Aberrations](#) [Genetic Predisposition to Disease](#)  
[Hepatolenticular Degeneration](#) [Kidney Failure](#), [Chronic Liver Failure](#), [Acute Mental Disorders](#) [Motor Skills](#) [Wilson's disease](#)