



SZABO SCANDIC

Part of Europa Biosite

Produktinformation



Forschungsprodukte & Biochemikalien



Zellkultur & Verbrauchsmaterial



Diagnostik & molekulare Diagnostik



Laborgeräte & Service

Weitere Information auf den folgenden Seiten!
See the following pages for more information!



Lieferung & Zahlungsart

siehe unsere [Liefer- und Versandbedingungen](#)

Zuschläge

- Mindermengenzuschlag
- Trockeneiszuschlag
- Gefahrgutzuschlag
- Expressversand

SZABO-SCANDIC HandelsgmbH

Quellenstraße 110, A-1100 Wien

T. +43(0)1 489 3961-0

F. +43(0)1 489 3961-7

mail@szabo-scandic.com

www.szabo-scandic.com

[linkedin.com/company/szaboscandic](https://www.linkedin.com/company/szaboscandic)

ATR polyclonal antibody (A01)

Catalog # : H00000545-A01

規格 : [50 uL]

List All

Specification

Product Description: Mouse polyclonal antibody raised against a partial recombinant ATR.

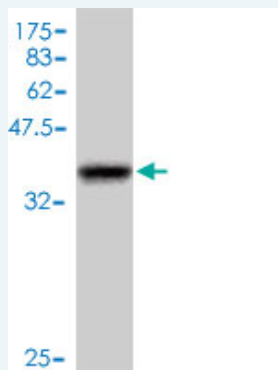
Immunogen: ATR (NP_001175, 2545 a.a. ~ 2644 a.a) partial recombinant protein with GST tag.

Sequence: DQREPLMSVLKTFLLHDPLVEWSKPVKGHSKAPLNETGEVVNEKAKTHVL
DIEQRLQGVIKTRNRVTGLPLSIEGHVHYLIQEATDENLLCQMYLGWTPY
M

Host: Mouse

Reactivity: Human

Quality Control Testing: Antibody Reactive Against Recombinant Protein.



Western Blot detection against Immunogen (37.11 kDa) .

Storage Buffer: 50 % glycerol

Storage Instruction: Store at -20°C or lower. Aliquot to avoid repeated freezing and thawing.

MSDS: [Download](#)

Datasheet: [Download](#)

Applications

Western Blot (Recombinant protein)

[Protocol Download](#)

ELISA

Gene Information

Entrez GeneID: [545](#)

GeneBank Accession#: [NM_001184](#)

Application Image

Western Blot (Recombinant protein)

ELISA

Protein Accession#: [NP_001175](#)

Gene Name: ATR

Gene Alias: FRP1,MEC1,SCKL,SCKL1

Gene Description: ataxia telangiectasia and Rad3 related

Omim ID: [210600](#), [601215](#)

Gene Ontology: [Hyperlink](#)

Other Designations: FRAP-related protein-1,MEC1, mitosis entry checkpoint 1, homolog,Rad3 related protein,ataxia telangiectasia and Rad3 related protein,protein kinase ATR

Gene Pathway

[Cell cycle p53 signaling pathway](#)

Related Disease

[Adenocarcinoma](#) [Ataxia telangiectasia](#) [Atherosclerosis](#) [Breast cancer](#) [Breast Neoplasms](#) [Carcinoma, Endometrioid](#) [Carcinoma, Non-Small-Cell Lung](#) [Carcinoma, Pancreatic Ductal](#) [Cleft Lip](#) [Cleft Palate](#) [Colon cancer](#) [Colonic Neoplasms](#) [Coronary Disease](#) [DNA Damage](#) [Endometrial Neoplasms](#) [Esophageal Neoplasms](#) [Genetic Predisposition to Disease](#) [Hypertension](#) [Hypertrophy, Left Ventricular](#)

... see more