



# SZABO SCANDIC

Part of Europa Biosite

## Produktinformation



Forschungsprodukte & Biochemikalien



Zellkultur & Verbrauchsmaterial



Diagnostik & molekulare Diagnostik



Laborgeräte & Service

Weitere Information auf den folgenden Seiten!  
See the following pages for more information!



### Lieferung & Zahlungsart

siehe unsere [Liefer- und Versandbedingungen](#)

### Zuschläge

- Mindermengenzuschlag
- Trockeneiszuschlag
- Gefahrgutzuschlag
- Expressversand

### SZABO-SCANDIC HandelsgmbH

Quellenstraße 110, A-1100 Wien

T. +43(0)1 489 3961-0

F. +43(0)1 489 3961-7

[mail@szabo-scandic.com](mailto:mail@szabo-scandic.com)

[www.szabo-scandic.com](http://www.szabo-scandic.com)

[linkedin.com/company/szaboscandic](https://www.linkedin.com/company/szaboscandic) 

## AXL MaxPab mouse polyclonal antibody (B01) MaxPab®

Catalog # : H00000558-B01

規格 : [ 50 uL ]

[List All](#)

### Specification

**Product Description:** Mouse polyclonal antibody raised against a full-length human AXL protein.

**Immunogen:** AXL (AAH32229.1, 1 a.a. ~ 894 a.a) full-length human protein.

**Sequence:**  
 MAWRCPRMGRVPLAWCLALCGWACMAPRGTQAEESPFVGNPGNITG  
 ARGLTGTLRCQLQVQGEPEVHWRDGGQILELADSTQTQVPLGEDEQ  
 DDWIVSQLRITSLQLSDTGQYQCLVFLGHQTFVSQPGYVGLEGLPYFL  
 EEPEDRTVAANTPFNLSCQAQGPPEVDLLWLQDAVPLATAPGHGPQR  
 SLHVPGLNKTSSFSCEAHNAKGVTTSRTATITVLPQQPRNLHLVSRQPT  
 LEVAWTPGLSGIYPLTHCTLQAVLSDDGMGIQAGEPDPPEEPLTSQASV  
 PPHQLRLGSLHPHTPYHIRVACTSSQGPSSWTHWLPVETPEGVPLGPPE  
 NISATRNGSQAFVHWQEPRAPLQGTLLGYRLAYQGQDTPEVLMDIGLR  
 QEVTLELQGDGVSNTVCVAAYTAAGDGPWVSLVPLEAWRPGQAQP  
 VHQLVKEPSTPAFSWPWWYVLLGAVVAAACVLILALFLVHRRKKETRYG  
 EVFEPTVERGELVRYRVRKSYSRRTTEATLNSLGISEELKEKLRDVMMD  
 LHKVALGKTLGEGEFGAVMEGQLNQDDSILKAVKTMKIAICTRSELEDF  
 LSEAVCMKEFDHPNVMRLIGVCFQGSERESFPAPVVILPFMKHGDLSFL  
 LYSRLGDQPVYLPQMLVKFMADIASGMEYLSTKRFIHRDLAARNCMLN  
 ENMSVCVADFGLSKKIYNGDYRQGRKAKMPVKWIAIESLADRVTYSKSD  
 VVSFGVTMWEIATRGQTPYPGVENSEIYDYLRRGNRLKQPADCLDGLY  
 ALMSRCWELNPQDRPSFTELRDLENTLKALPPAQEPDEILYVNMDEGG  
 GYPEPPGAAGGADPPTQDPKDCSCLTAAEVHPAGRYVLCPSSTPSP  
 AQPADRGSPAAPGQEDGA

**Host:** Mouse

**Reactivity:** Human

**Quality Control Testing:** Antibody reactive against mammalian transfected lysate.

**Storage Buffer:** No additive

**Storage Instruction:** Store at -20°C or lower. Aliquot to avoid repeated freezing and thawing.

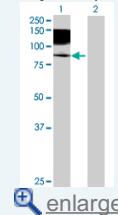
**Note:** For IHC and IF applications, antibody purification with Protein A will be needed prior to use.


**MSDS:**  [Download](#)

**Datasheet:**  [Download](#)

### Application Image

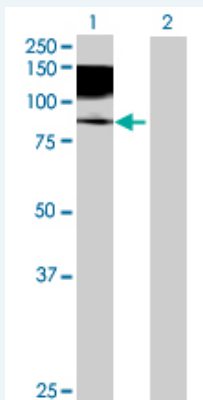
Western Blot (Transfected lysate)



 [enlarge](#)

### Applications

Western Blot (Transfected lysate)



Western Blot analysis of AXL expression in transfected 293T cell line ([H00000558-T01](#)) by AXL MaxPab polyclonal antibody.

Lane 1: AXL transfected lysate(98.34 KDa).  
Lane 2: Non-transfected lysate.

 [Protocol Download](#)

### Gene Information

**Entrez GeneID:** [558](#)

**GeneBank Accession#:** [BC032229.1](#)

**Protein Accession#:** [AAH32229.1](#)

**Gene Name:** AXL

**Gene Alias:** JTK11,UFO

**Gene Description:** AXL receptor tyrosine kinase

**Omim ID:** [109135](#)

**Gene Ontology:** [Hyperlink](#)

**Gene Summary:** The protein encoded by this gene is a member of the receptor tyrosine kinase subfamily. Although it is similar to other receptor tyrosine kinases, this protein represents a unique structure of the extracellular region that juxtaposes IgL and FNIII repeats. It transduces signals from the extracellular matrix into the cytoplasm by binding growth factors like vitamin K-dependent protein growth-arrest-specific gene 6. It is involved in the stimulation of cell proliferation and can also mediate cell aggregation by homophilic binding. Alternatively spliced transcript variants encoding different isoforms have been identified. [provided by RefSeq]

**Other Designations:** AXL transforming sequence/gene, oncogene AXL

### Related Disease

[Cardiovascular Diseases](#) [Carotid Artery Diseases](#) [Diabetes Mellitus, Type 2](#) [Edema](#) [Genetic Predisposition to Disease](#) [Stroke](#)