



SZABO SCANDIC

Part of Europa Biosite

Produktinformation



Forschungsprodukte & Biochemikalien



Zellkultur & Verbrauchsmaterial



Diagnostik & molekulare Diagnostik



Laborgeräte & Service

Weitere Information auf den folgenden Seiten!
See the following pages for more information!



Lieferung & Zahlungsart

siehe unsere [Liefer- und Versandbedingungen](#)

Zuschläge

- Mindermengenzuschlag
- Trockeneiszuschlag
- Gefahrgutzuschlag
- Expressversand

SZABO-SCANDIC HandelsgmbH

Quellenstraße 110, A-1100 Wien

T. +43(0)1 489 3961-0

F. +43(0)1 489 3961-7

mail@szabo-scandic.com

www.szabo-scandic.com

[linkedin.com/company/szaboscandic](https://www.linkedin.com/company/szaboscandic) 

B2M polyclonal antibody (A01)

Catalog # : H00000567-A01

規格 : [50 uL]

List All

Specification

Product Description: Mouse polyclonal antibody raised against a full-length recombinant B2M.

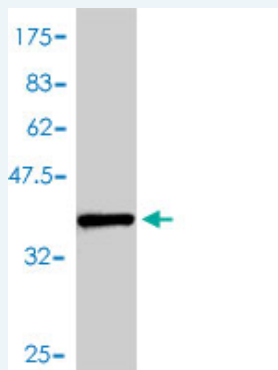
Immunogen: B2M (AAH32589, 1 a.a. ~ 119 a.a) full-length recombinant protein with GST tag.

Sequence: MSRSVALAVLALLSLSGLEAIQRTPKIQVYSRHPAENGKSNFLNCYVSGF
HPSDIEVDLLKNGERIEKVEHSDLSFSKDWSFYLLYYTEFTPTEKDEYAC
RVNHMTLSQPKMKWDRDM

Host: Mouse

Reactivity: Human

Quality Control Testing: Antibody Reactive Against Recombinant Protein.



Western Blot detection against Immunogen (39.2 KDa) .

Storage Buffer: 50 % glycerol

Storage Instruction: Store at -20°C or lower. Aliquot to avoid repeated freezing and thawing.

MSDS: [Download](#)

Datasheet: [Download](#)

Applications

Western Blot (Recombinant protein)

[Protocol Download](#)

ELISA

Gene Information

Entrez GeneID: [567](#)

GeneBank Accession#: [BC032589](#)

Application Image

Western Blot (Recombinant protein)

ELISA

Protein Accession#: [AAH32589](#)

Gene Name: B2M

Gene Alias: -

Gene Description: beta-2-microglobulin

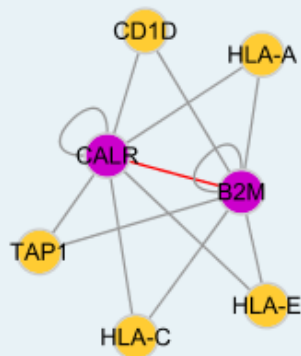
Omim ID: [109700](#), [241600](#)

Gene Ontology: [Hyperlink](#)

Gene Summary: This gene encodes a serum protein found in association with the major histocompatibility complex (MHC) class I heavy chain on the surface of nearly all nucleated cells. The protein has a predominantly beta-pleated sheet structure that can form amyloid fibrils in some pathological conditions. A mutation in this gene has been shown to result in hypercatabolic hypoproteinemia

Other Designations: beta chain of MHC class I molecules, beta-2-microglobin

Interactome



Gene Pathway

[Antigen processing and presentation](#)

Related Disease

[Arthritis, Rheumatoid](#) [Cardiovascular Diseases](#) [Diabetes Mellitus, Type 2](#) [Disease Edema](#) [Gastritis](#) [Genetic Predisposition to Disease](#) [Kidney Failure, Chronic](#) [Osteoarthritis](#) [Parkinson Disease](#) [Parkinson disease](#) [Stomach Neoplasms](#)